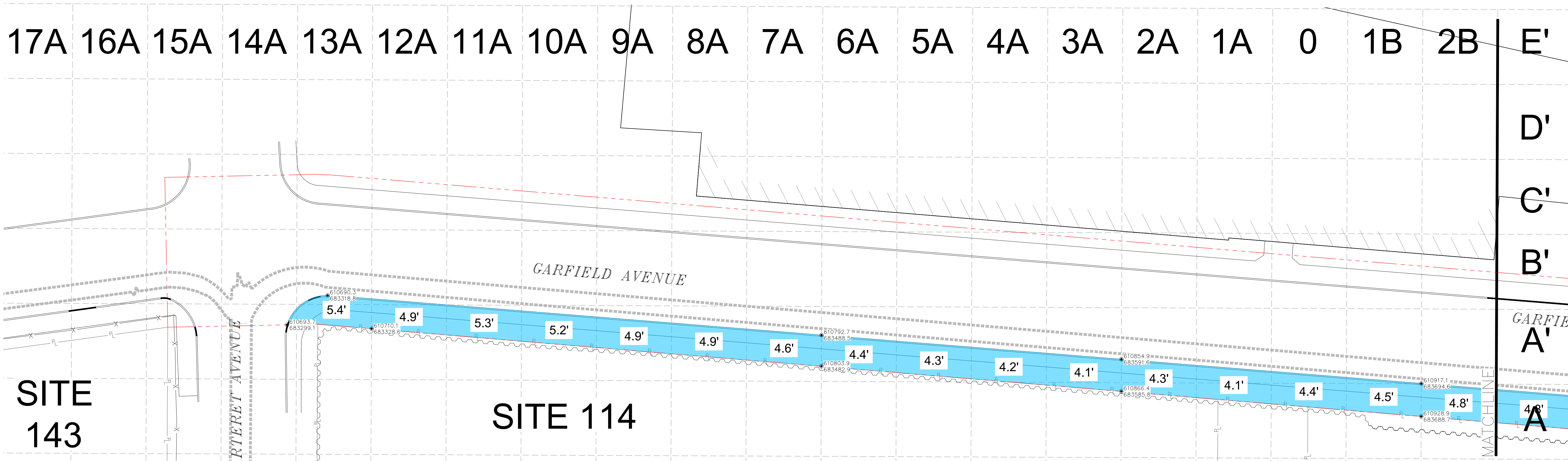
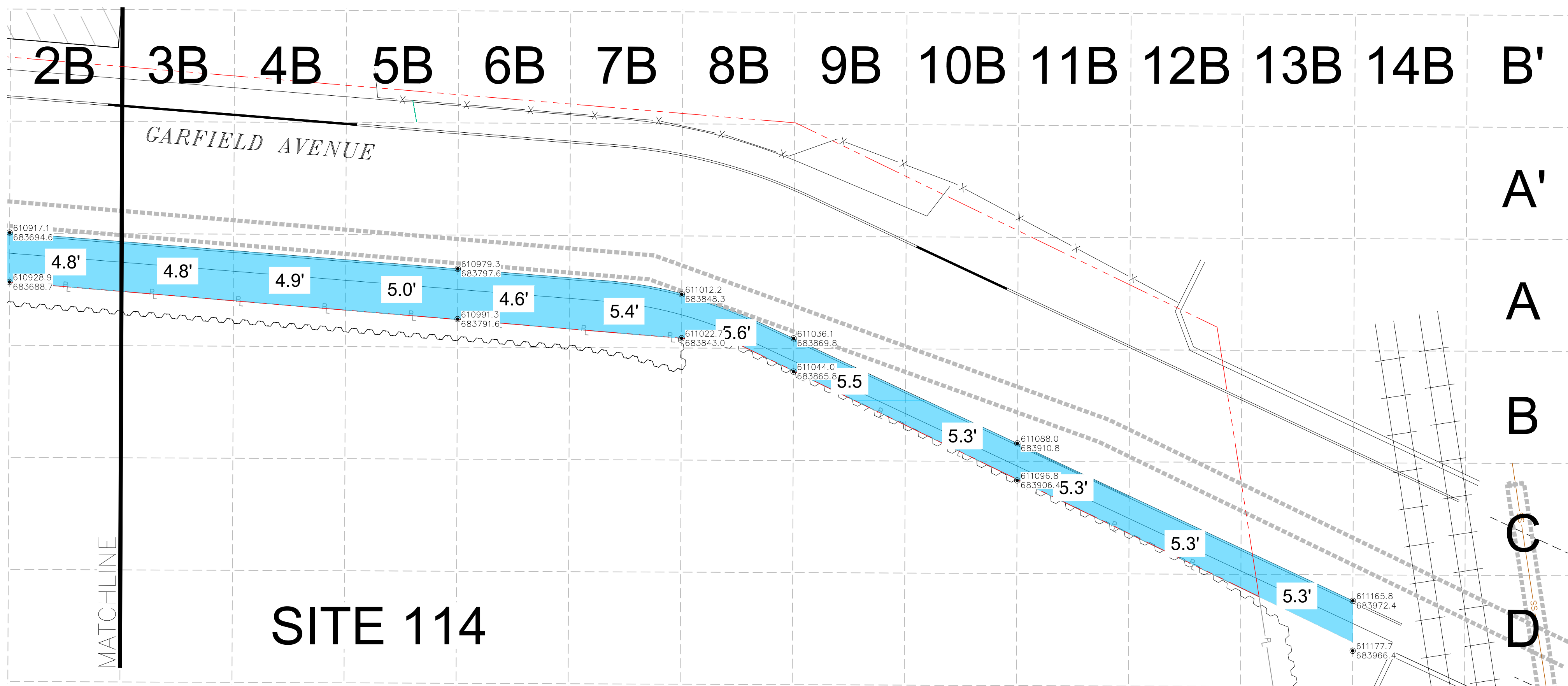


LEGEND

- PROPERTY LINE
- FENCE
- EXISTING SHEET PILE
- CURB
- EXISTING BUILDING
- NEW JERSEY TRANSIT LIGHT RAIL
- EXTENTS OF CLEAN CORRIDOR EXCAVATION
- 5.4'** EXCAVATION BOTTOM ELEVATION (PER GRID)
- EXCAVATION LATERAL EXTENTS COORDINATES (INFERRED FROM SHEET PILE AND CURB SURVEYS)
- 78" STEEL COMBINED SEWER (APPROXIMATE)
- PHASE 4 GARFIELD AVENUE BOUNDARY

NOTES:

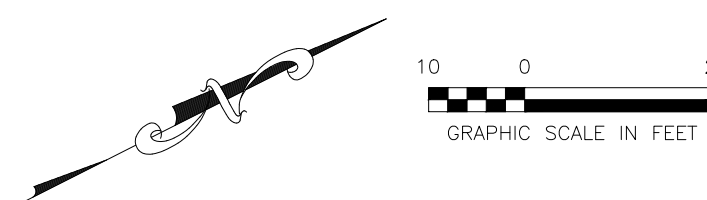
1. COORDINATES ARE PRESENTED IN THE NORTH AMERICAN DATUM OF 1983. ELEVATIONS ARE PRESENTED IN THE NORTH AMERICAN VERTICAL DATUM OF 1988.
2. EXCAVATION BOTTOM ELEVATIONS PRESENTED ARE BASED ON PIT BOTTOM SAMPLE ELEVATIONS.
3. COORDINATES OF EXCAVATION LATERAL EXTENTS WERE BASED ON THE SURVEYED LOCATIONS OF THE SHEET PILE WALL AND THE CURB. THE SHEET PILE WAS PRESENTED ON "SHEET PILE WALL AS-BUILT", PREPARED BY MASER CONSULTING, LAST UPDATED JANUARY 7, 2015. THE CURB WAS SURVEYED BY MASER CONSULTING ON JANUARY 14, 2015 AND THE SURVEY'S RESULTS WERE PRESENTED IN THE APRIL 1, 2016 TECHNICAL MEMORANDUM TITLED "GARFIELD AVENUE SIDEWALK CLEAN CORRIDOR AS-BUILT (REVISION 1)".



SITE 143

SITE 114

AECOM



PPG GARFIELD AVE GROUP OF SITES JERSEY CITY, NEW JERSEY		REMEDIAL ACTION WORK PLAN (SOIL) GARFIELD AVENUE ROADWAY CLEAN CORRIDOR AS-BUILT EXTENTS AND ELEVATIONS	
DATE: 03/28/2019	DRWN: CCD/ALC	FIGURE 2-2	