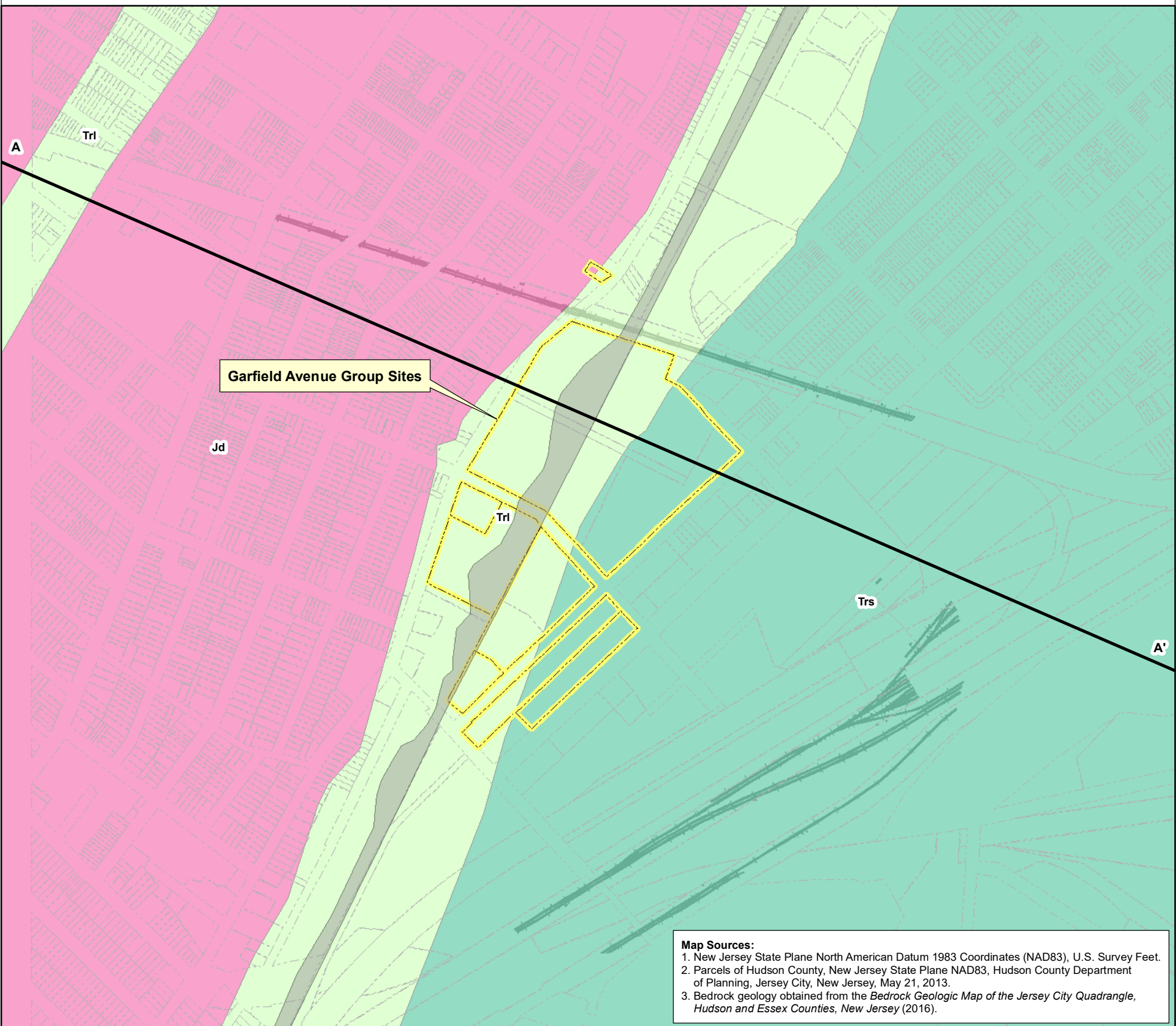
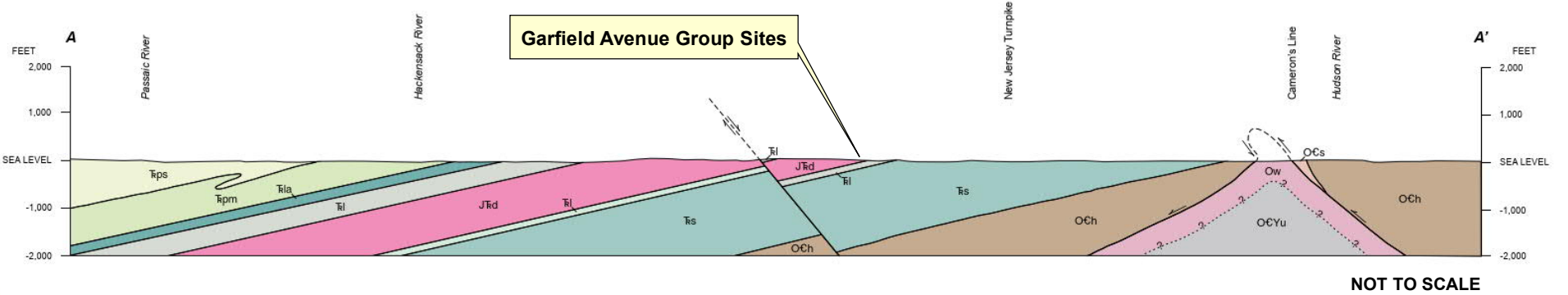


CROSS-SECTIONAL VIEW (A-A')



**Map Sources:**  
 1. New Jersey State Plane North American Datum 1983 Coordinates (NAD83), U.S. Survey Feet.  
 2. Parcels of Hudson County, New Jersey State Plane NAD83, Hudson County Department of Planning, Jersey City, New Jersey, May 21, 2013.  
 3. Bedrock geology obtained from the *Bedrock Geologic Map of the Jersey City Quadrangle, Hudson and Essex Counties, New Jersey* (2016).

- LEGEND**
- Garfield Avenue Group Boundary
  - Hudson County Parcels
  - Former Morris Canal
  - Railroad Tracks
- Regional Bedrock Geology**
- Jd, Jurassic Diabase
  - Trl, Lockatong Formation
  - Trs, Stockton Formation



PPG  
 GARFIELD AVENUE GROUP  
 JERSEY CITY, NEW JERSEY  
 60550261

DATE: 10/7/2020    DRAWN BY: SR    CHECKED BY: FS

FIGURE 3-3  
 REGIONAL BEDROCK GEOLOGY

