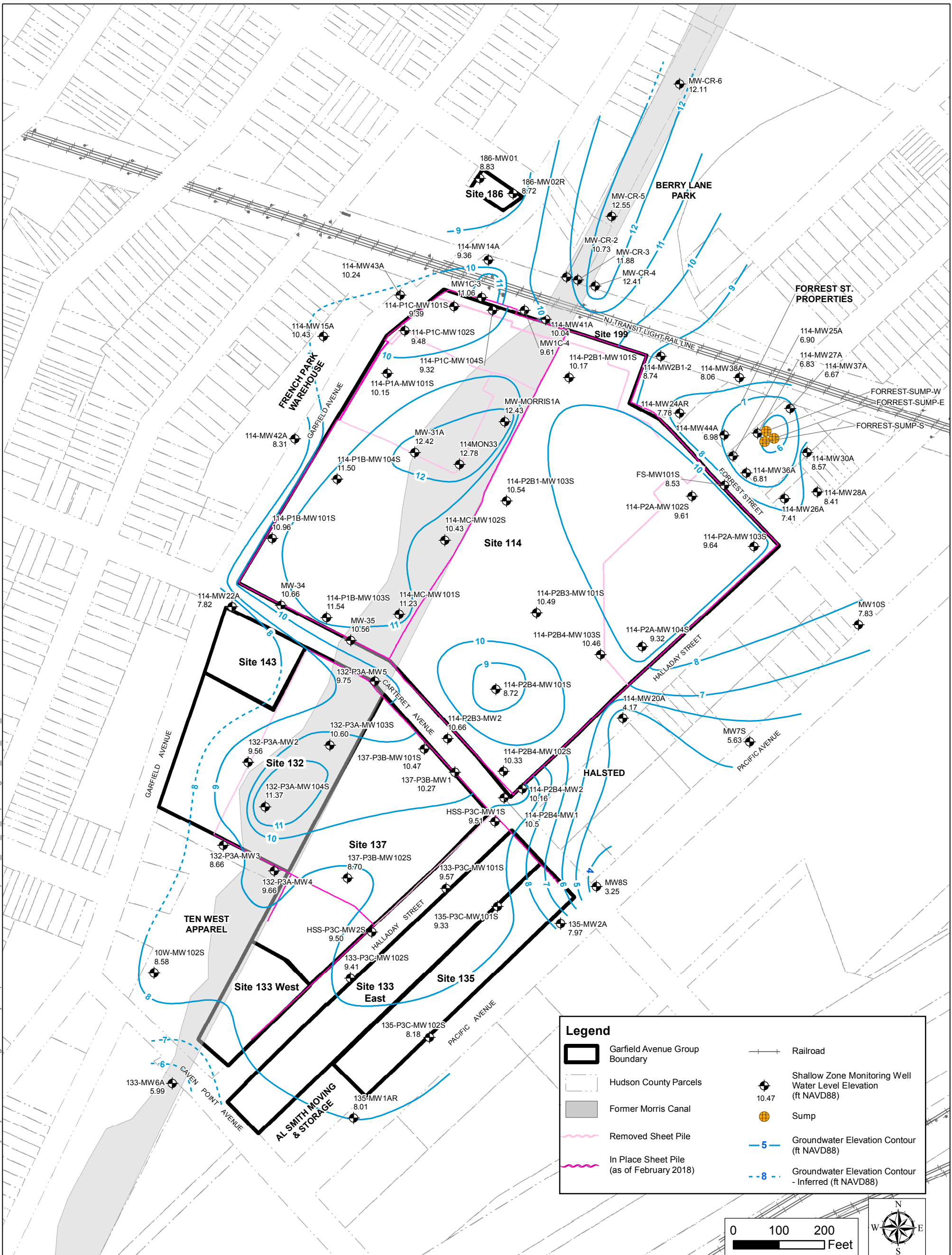
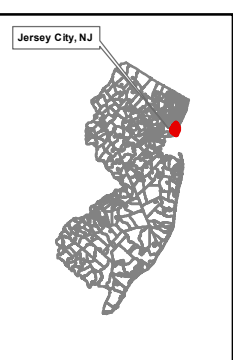
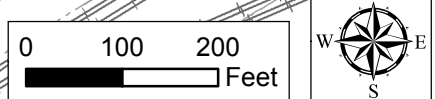


Last saved by: ravis 2018-08-24
Path: \\uspsw2\pfs\sw001\Data\GIS\MXD\GAGroup\2018_GW_RI_Report\Fig 3-3_GW_Elev_Shallow.mxd



Legend	
	Garfield Avenue Group Boundary
	Hudson County Parcels
	Former Morris Canal
	Removed Sheet Pile
	In Place Sheet Pile (as of February 2018)
	Railroad
	Shallow Zone Monitoring Well Water Level Elevation (ft NAVD88)
	Sump
	Groundwater Elevation Contour (ft NAVD88)
	Groundwater Elevation Contour - Inferred (ft NAVD88)



Notes:
 1. Wells were gauged between May 29 and June 11, 2018.
 2. Vertical Elevation Datum: North American Vertical Datum of 1988 (NAVD88).
 3. ft - feet

Map Notes:
 1. New Jersey (NJ) State Plane North American Datum 1983 (NAD83) Coordinates, U.S. Survey Feet.
 2. Parcels of Hudson County, NJ State Plane NAD83, Hudson County Department of Planning, Jersey City, New Jersey, May 21, 2013.



PPG
 GARFIELD AVENUE GROUP
 JERSEY CITY, NEW JERSEY
 60550261

DATE: 8/28/2018 DRAWN BY: SR CHECKED BY: FS

FIGURE 3-5
 GROUNDWATER ELEVATION CONTOUR MAP
 SHALLOW WATER-BEARING ZONE