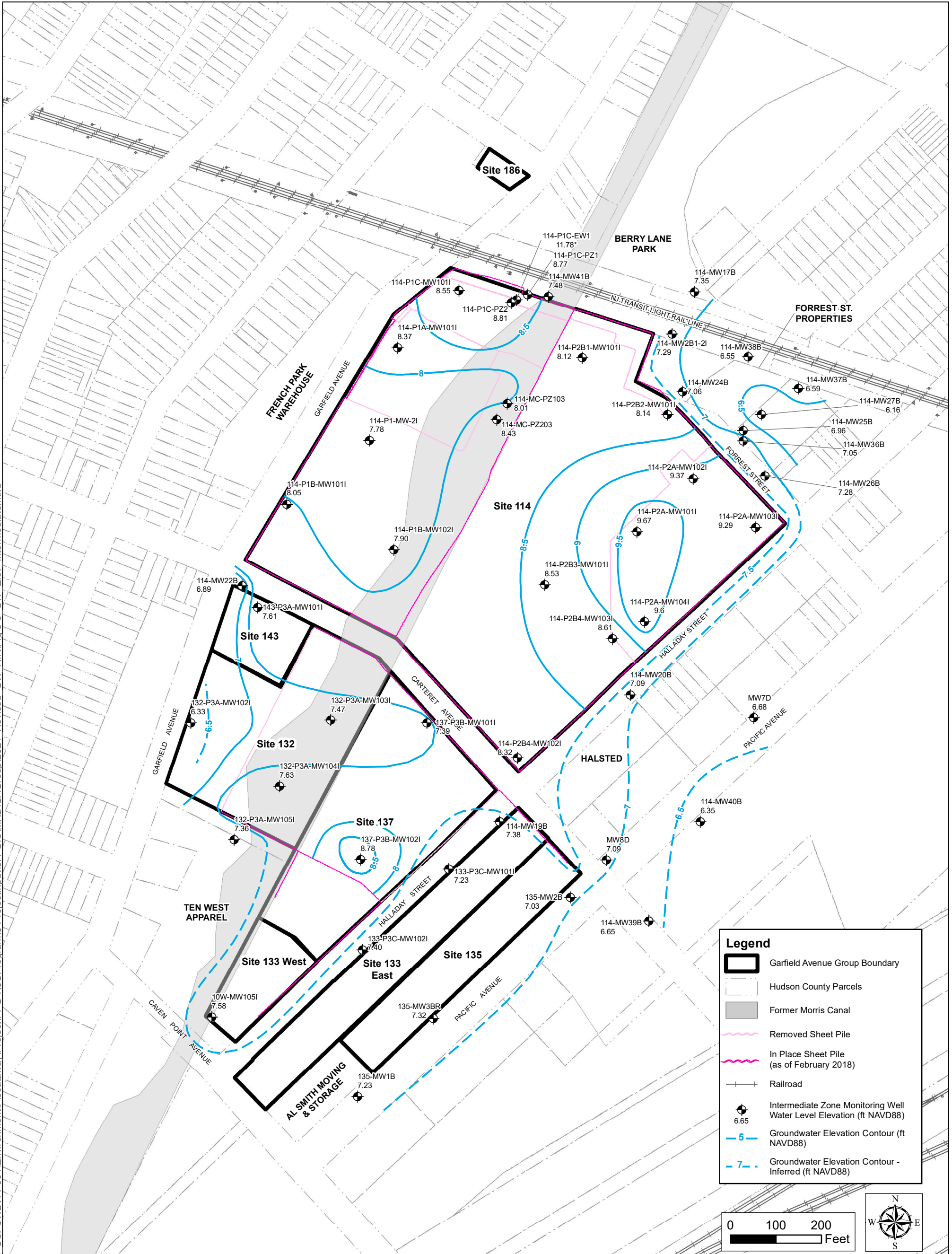
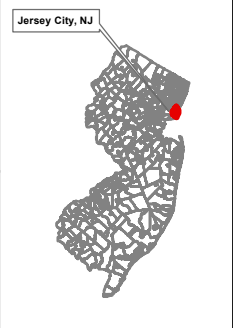
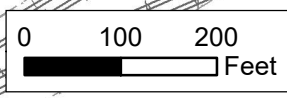


Last saved by: ravis 3/18/2021
 Path: L:\Legacy\USPSW2\PPSPW001\Data_USPSW2\FP001\Environment\Placatway\Project\PPG-NJCProgram\6-ProjectInput\6-4-GIS\IMXD\IGAGroup\2021 Revised GW RIR\Fig 3-6 GW Elev Intermediate.mxd



Legend

- Garfield Avenue Group Boundary
- Hudson County Parcels
- Former Morris Canal
- Removed Sheet Pile
- In Place Sheet Pile (as of February 2018)
- Railroad
- Intermediate Zone Monitoring Well
6.65
- 5 Groundwater Elevation Contour (ft NAVD88)
- 7 Groundwater Elevation Contour - Inferred (ft NAVD88)



Notes:

1. Wells were gauged between May 29 and June 11, 2018.
2. Vertical Elevation Datum: North American Vertical Datum of 1988 (NAVD88).
3. * - data not used in contouring as it is anomalous.
4. ft - feet

Map Notes:

1. New Jersey (NJ) State Plane North American Datum 1983 (NAD83) Coordinates, U.S. Survey Feet.
2. Parcels of Hudson County, NJ State Plane NAD83, Hudson County Department of Planning, Jersey City, New Jersey, May 21, 2013.



PPG
 GARFIELD AVENUE GROUP
 JERSEY CITY, NEW JERSEY
 60550261

DATE: 3/18/2021 DRAWN BY: SR CHECKED BY: FS

FIGURE 3-6
GROUNDWATER ELEVATION CONTOUR MAP
INTERMEDIATE WATER-BEARING ZONE