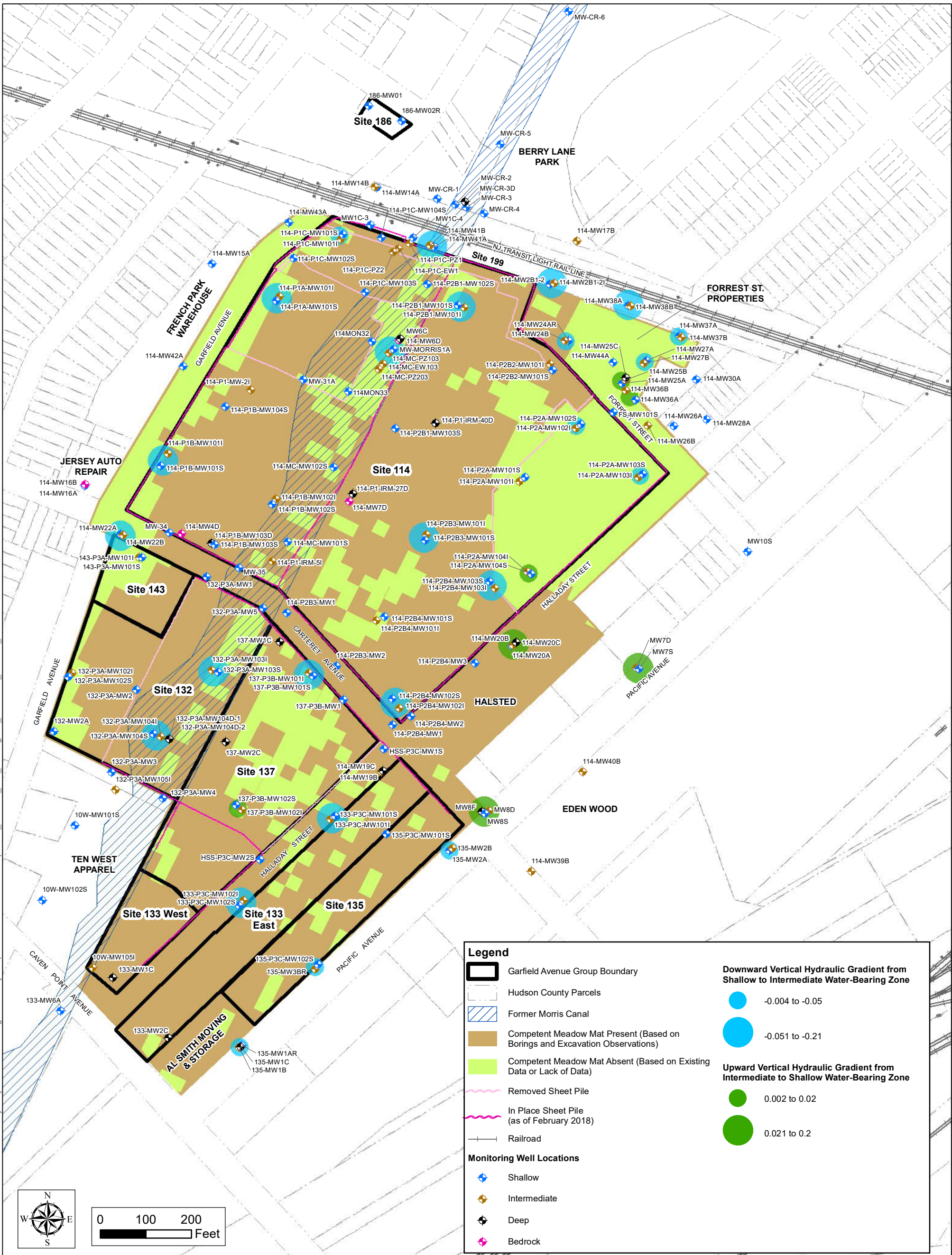


Last saved by: ravis 2021-03-05 Path: L:\Legacy\USPSW2\FPSW0011\Data_USPSW2\FPSW0011\Environment\Piscataway\Project\PPG-NUCProgram\6-ProjectInput\6-4-GIS\MXD\GAGroup\2021_Revised_GW_RIR\Fig 3-6_Gradients_Shallow_Interm.mxd



Legend

- Garfield Avenue Group Boundary
- Hudson County Parcels
- Former Morris Canal
- Competent Meadow Mat Present (Based on Borings and Excavation Observations)
- Competent Meadow Mat Absent (Based on Existing Data or Lack of Data)
- Removed Sheet Pile
- In Place Sheet Pile (as of February 2018)
- Railroad

Monitoring Well Locations

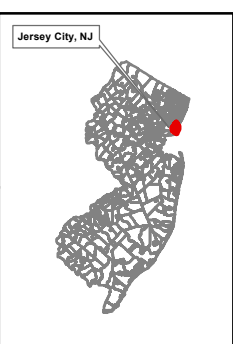
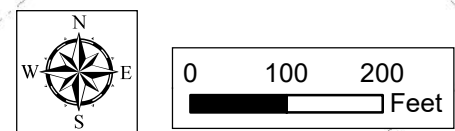
- Shallow
- Intermediate
- Deep
- Bedrock

Downward Vertical Hydraulic Gradient from Shallow to Intermediate Water-Bearing Zone

- 0.004 to -0.05
- 0.051 to -0.21

Upward Vertical Hydraulic Gradient from Intermediate to Shallow Water-Bearing Zone

- 0.002 to 0.02
- 0.021 to 0.2



Notes:

- Refer to Table 3-3 for summary of vertical hydraulic gradients calculated for each well cluster.
- Monitoring wells were gauged between May 29 and June 11, 2018.

Map Notes:

- New Jersey (NJ) State Plane North American Datum 1983 (NAD83) Coordinates, U.S. Survey Feet.
- Parcels of Hudson County, New Jersey State Plane NAD83, Hudson County Department of Planning, Jersey City, New Jersey, May 21, 2013.



PPG
GARFIELD AVENUE GROUP
JERSEY CITY, NEW JERSEY
60550261

DATE: 3/5/2021 DRAWN BY: SR CHECKED BY: FS

FIGURE 3-8
VERTICAL HYDRAULIC GRADIENTS
BETWEEN SHALLOW AND INTERMEDIATE
WATER-BEARING ZONES