

ABBREVIATIONS:
 CCPW - Chromate Chemical Production Waste
 Cr - chromium
 Cr⁶⁺ - hexavalent chromium
 ft - feet
 mg/kg - milligrams per kilogram
 NAVD88 - North American Vertical Datum of 1988
 NRDCSRS - New Jersey Department of Environmental Protection Non-Residential Direct Contact Soil Remediation Standard
 RDCSRS - New Jersey Department of Environmental Protection Residential Direct Contact Soil Remediation Standard

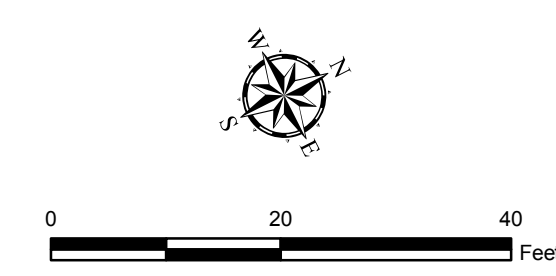
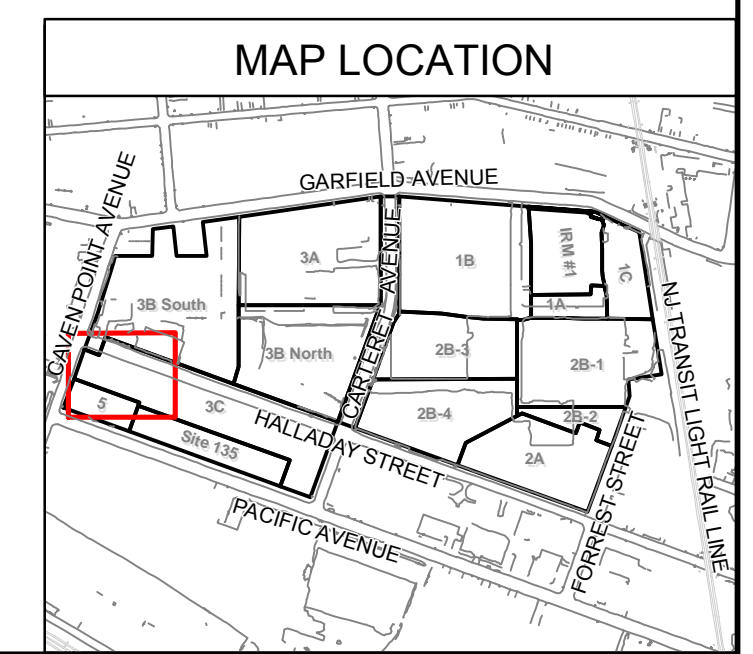
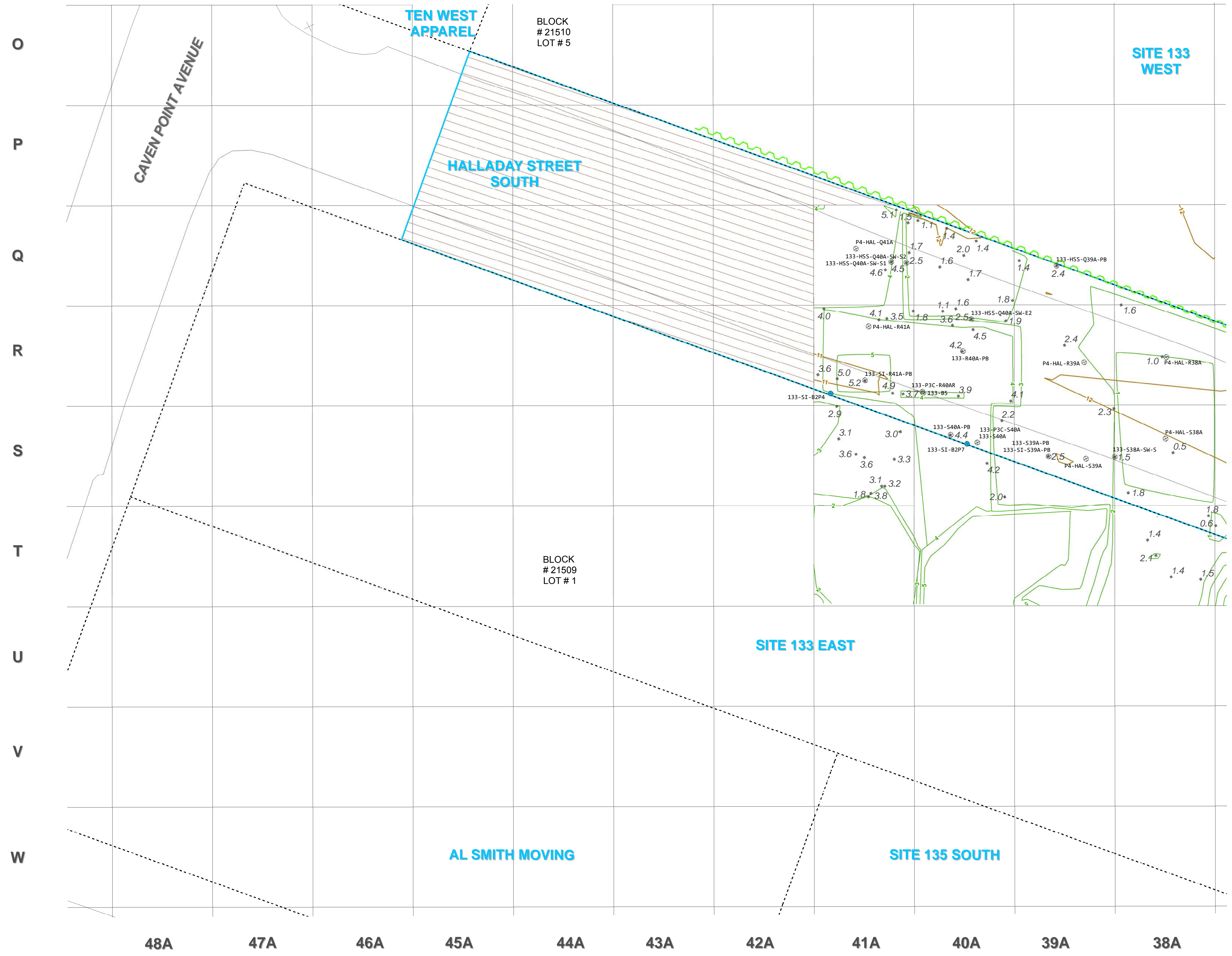
GENERAL NOTES:
 G1. The benzene and ethylbenzene data associated with the sample locations shown on this figure is provided in Table 5-3. None of the detected results exceeded the standards.
 G2. Elevation vertical datum is NAVD88, in U.S. survey ft.
 G3. Source of block/lot information is Jersey City Parcel Data from New Jersey Geographic Information Network (NJGIN), last updated 10/6/2015 (available at: <http://data.jerseycitynj.gov/dataset/jersey-city-parcel-polygon>).
 G4. Additional sample locations are shown on Figures 5-3B and 5-3C.
 G5. This figure presents data for locations within the Site boundary that have samples remaining in place.

SPECIFIC NOTES:
 S1. Property lines and pre-construction topographical contours are sourced from the "Boundary & Topographical Survey, PPG Site, Lot 5, Block 21510, Jersey City, Hudson County, New Jersey" prepared by Borbas Surveying and Mapping, LLC, dated May 30, 2014.
 S2. Post-excavation elevation survey points were taken from the "Post Excavation Elevation Plan for ENACT, LLC; PPG SITE 133/135 HSS 133E 135 ASM EXCAVATION," produced by Maser Consulting P.A., dated 05/09/18.
 S3. Conceptual post-excavation elevation contours were generated using professional judgement based on post-excavation elevation survey points and knowledge of excavation practices utilized during remedial excavation (i.e., excavation conducted on a 30 ft by 30 ft basis).
 S4. The extent of excavation shown here represents the as-built terminal excavation elevation for remediation of Cr⁶⁺, CCPW, non-Cr constituents, and concrete foundation removal.
 S5. In Grids R40A, S39A, and S40A, two sample locations are located adjacent; therefore, the sampling location symbols overlap on the figure.
 S6. The southernmost boundary of Halladay Street South depicted on this figure represents the site boundary established in the Master Schedule. The portion of Halladay Street between this boundary and Caven Point Avenue is considered part of Phase 3B South.

LEGEND

- ⊗ SAMPLING LOCATION (REMAINING SAMPLES)
- REMAINING SAMPLES NOT ANALYZED FOR BENZENE AND ETHYLBENZENE
- RESULT IS BELOW THE MOST STRINGENT STANDARD
- ▲ POST-EXCAVATION ELEVATION SURVEY POINT REPRESENTING AS-BUILT TERMINAL EXCAVATION ELEVATION (FT NAVD88)
- CONCEPTUAL POST-EXCAVATION ELEVATION CONTOUR (1-FOOT INTERVAL IN FT NAVD88)
- ~ IN PLACE SHEET PILE (AS OF OCTOBER 2017)
- PRE-REMEDIATION ELEVATION CONTOUR (1-FOOT INTERVAL IN FT NAVD88)
- - - - PROPERTY LINE
- ROAD
- GRID LAYOUT
- ▨ GRIDS NOT FULLY REMEDIATED, AND TO BE INCLUDED IN A SEPARATE SUBMITTAL
- ▭ HALLADAY STREET SOUTH BOUNDARY

Soil Remediation Standards (mg/kg)			
Analyte	RDCSRS	NRDCSRS	
BENZENE	2	5	
ETHYLBENZENE	7800	110000	



PPG
 HALLADAY STREET SOUTH
 GARFIELD AVENUE GROUP
 JERSEY CITY, NEW JERSEY
 DATE: 05/30/2018

HALLADAY STREET SOUTH (COLUMN 38A TO 46A)
 SAMPLE MAP FOR BENZENE AND ETHYLBENZENE
 COMPARED TO SOIL REMEDIATION STANDARDS
 FIGURE 5-3A