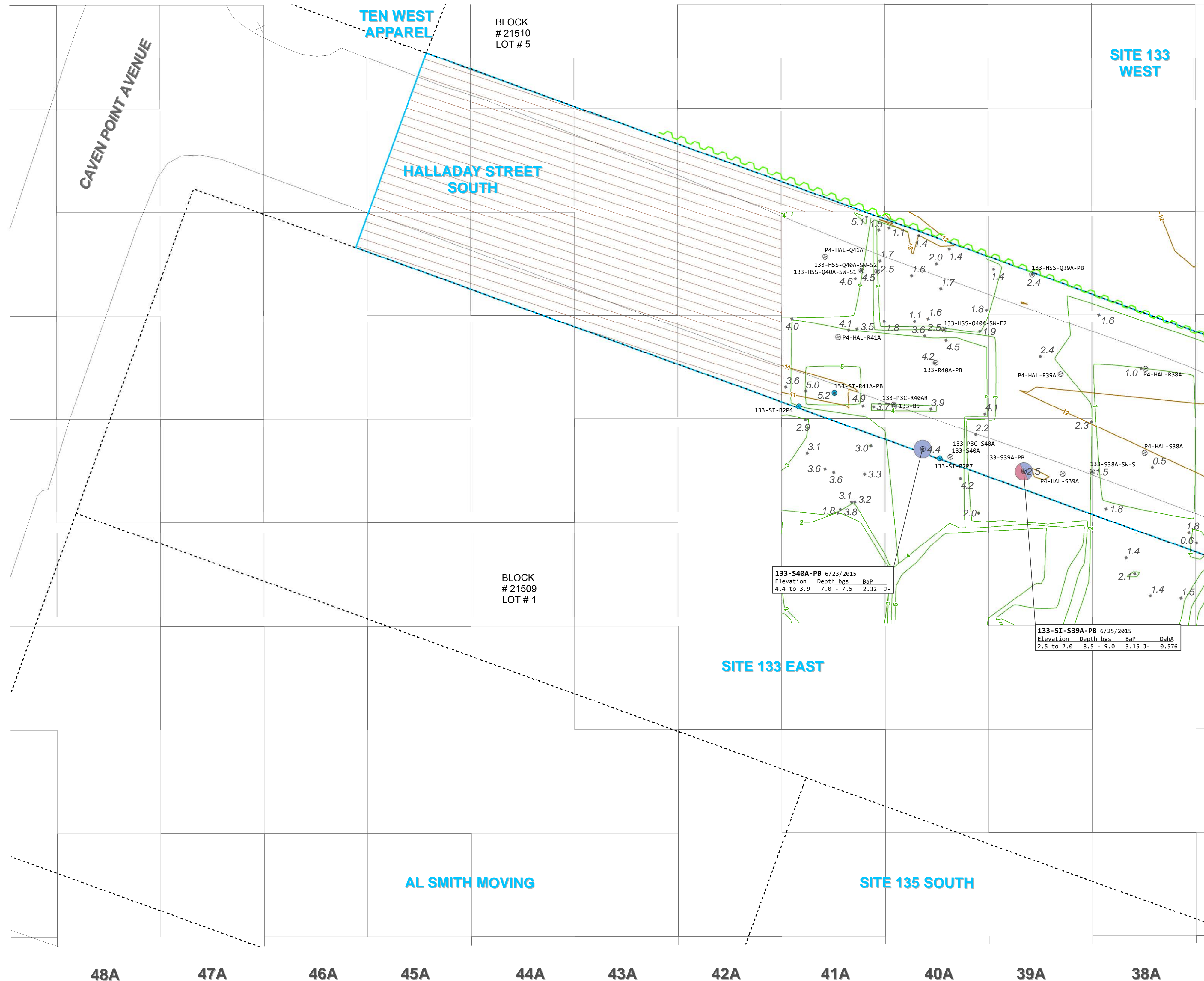


O  
P  
Q  
R  
S  
T  
U  
V  
W



**ABBREVIATIONS:**  
 BaP - benzo(a)pyrene  
 bgs - below ground surface  
 CCPW - Chromate Chemical Production Waste  
 Cr - chromium  
 Cr<sup>6</sup> - hexavalent chromium  
 DahA - dibenzo(a,h)anthracene  
 ft - feet  
 mg/kg - milligrams per kilogram  
 NAVD88 - North American Vertical Datum of 1988  
 NRDCSRS - New Jersey Department of Environmental Protection Non-Residential Direct Contact Soil Remediation Standard  
 PAHs - polycyclic aromatic hydrocarbons  
 RDCSRS - New Jersey Department of Environmental Protection Residential Direct Contact Soil Remediation Standard

**QUALIFIERS:**  
 J - The result was an estimated value with low bias; the associated numerical value was an approximate concentration of the analyte in the sample.

**GENERAL NOTES:**  
 G1. The PAH data associated with the sample locations shown on this figure are provided in Table 5-4. Data presented in call out boxes on this figure are outliers (i.e., data points that require further explanation). Specific notes on how the New Jersey Department of Environmental Protection's remedial standards are being met and/or how remediation is being achieved/completed for each outlier sample are provided in the Specific Notes in Table 5-4.  
 G2. "Elevation" refers to the sample elevation based on the pre-remediation surface elevation for samples collected from the pit bottom, and the surface elevation of the sample location when the sample was collected via boring or test pit.  
 G3. Elevation vertical datum is NAVD88, in U.S. survey ft.  
 G4. Results are reported in mg/kg.  
 G5. Source of block/lot information is Jersey City Parcel Data from New Jersey Geographic Information Network (NJGIN), last updated 10/6/2015 (available at: <http://data.jerseycitynj.gov/dataset/jersey-city-parcel-polygon>).  
 G6. Additional sample locations are shown on Figures 5-4B and 5-4C.  
 G7. This figure presents data for locations within the Site boundary that have samples remaining in place.

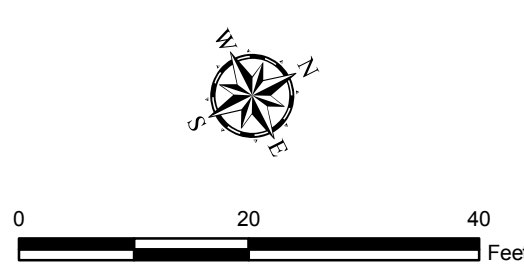
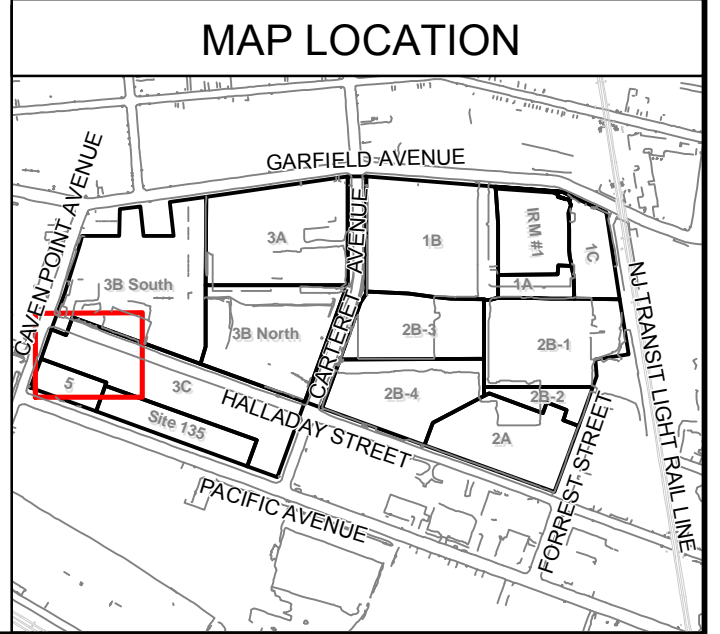
**SPECIFIC NOTES:**  
 S1. Property lines and pre-construction topographical contours are sourced from the "Boundary & Topographical Survey, PPG Site, Lot 5, Block 21510, Jersey City, Hudson County, New Jersey" prepared by Borbas Surveying and Mapping, LLC, dated May 30, 2014.  
 S2. Post-excavation elevation survey points were taken from the "Post Excavation Elevation Plan for ENTACT, LLC; PPG SITE 133/135 HSS 133E 135 ASM EXCAVATION," produced by Maser Consulting P.A., dated 05/09/18.  
 S3. Conceptual post-excavation elevation contours were generated using professional judgement based on post-excavation elevation survey points and knowledge of excavation practices utilized during remedial excavation (i.e., excavation conducted on a 30 ft by 30 ft basis).  
 S4. The extent of excavation shown here represents the as-built terminal excavation elevation for remediation of Cr<sup>6</sup>, CCPW, non-Cr constituents, and concrete foundation removal.  
 S5. In Grids R40A, S39A, and S40A, two sample locations are located adjacent; therefore, the sampling location symbols overlap on the figure.  
 S6. The southernmost boundary of Halladay Street South depicted on this figure represents the site boundary established in the Master Schedule. The portion of Halladay Street between this boundary and Caven Point Avenue is considered part of Phase 3B South.

**LEGEND**

⊗	SAMPLING LOCATION (REMAINING SAMPLES)	⊗ -3.8	POST-EXCAVATION ELEVATION SURVEY POINT REPRESENTING AS-BUILT TERMINAL EXCAVATION ELEVATION (FT NAVD88)	□	GRID LAYOUT
○	REMAINING SAMPLES NOT ANALYZED FOR PAHs	—	CONCEPTUAL POST-EXCAVATION ELEVATION CONTOUR (1-FOOT INTERVAL IN FT NAVD88)	▨	GRIDS NOT FULLY REMEDIATED, AND TO BE INCLUDED IN A SEPARATE SUBMITTAL
●	RESULT IS BELOW THE MOST STRINGENT STANDARD	—	IN PLACE SHEET PILE (AS OF OCTOBER 2017)	▭	HALLADAY STREET SOUTH BOUNDARY
●	RESULTS EXCEED THE MOST STRINGENT STANDARD, BUT ARE IN COMPLIANCE WITH REMEDIATION OBJECTIVES	—	PRE-REMEDIATION ELEVATION CONTOUR (1-FOOT INTERVAL IN FT NAVD88)	---	PROPERTY LINE
●	BENZO(A)PYRENE (BaP)	---	ROAD		
●	DIBENZO(A,H)ANTHRACENE (DahA)				

**Soil Remediation Standards (mg/kg)**

Analyte	RDCSRS	NRDCSRS
2-METHYLNAPHTHALENE	230	2400
BENZO(A)ANTHRACENE	5	17
BENZO(A)PYRENE	0.5	2
BENZO(B)FLUORANTHENE	5	17
DIBENZO(A,H)ANTHRACENE	0.5	2
INDENO(1,2,3-CD)PYRENE	5	17
NAPHTHALENE	6	17



PPG  
 HALLADAY STREET SOUTH  
 GARFIELD AVENUE GROUP  
 JERSEY CITY, NEW JERSEY  
 DATE: 05/30/2018

HALLADAY STREET SOUTH (COLUMN 38A TO 46A)  
 SAMPLE MAP FOR SELECT PAHs  
 COMPARED TO SOIL REMEDIATION STANDARDS  
 FIGURE 5-4A