

ABBREVIATIONS:
 BaP - benzo(a)pyrene
 bgs - below ground surface
 CCPW - Chromate Chemical Production Waste
 Cr - chromium
 Cr⁶ - hexavalent chromium
 ft - feet
 mg/kg - milligrams per kilogram
 NAVD88 - North American Vertical Datum of 1988
 NRDCRS - New Jersey Department of Environmental Protection Non-Residential Direct Contact Soil Remediation Standard
 PAHs - polycyclic aromatic hydrocarbons
 RDCRS - New Jersey Department of Environmental Protection Residential Direct Contact Soil Remediation Standard

QUALIFIERS:
 J - The result was an estimated value; the associated numerical value was an approximate concentration of the analyte in the sample.

GENERAL NOTES:
 G1. The PAH data associated with the sample locations shown on this figure are provided in Table 5-4. Data presented in call out boxes on this figure are outliers (i.e., data points that require further explanation). Specific notes on how the New Jersey Department of Environmental Protection's remedial standards are being met and/or how remediation is being achieved/completed for each outlier sample are provided in the Specific Notes in Table 5-4.
 G2. "Elevation" refers to the sample elevation based on the pre-remediation surface elevation for samples collected from the pit bottom, and the surface elevation of the sample location when the sample was collected via boring or test pit.
 G3. Elevation vertical datum is NAVD88, in U.S. survey ft.
 G4. Results are reported in mg/kg.
 G5. Source of block/lot information is Jersey City Parcel Data from New Jersey Geographic Information Network (NJGIN), last updated 10/6/2015 (available at: <http://data.jerseycitynj.gov/dataset/jersey-city-parcel-polygon>).
 G6. Additional sample locations are shown on Figures 5-4A and 5-4C.
 G7. This figure presents data for locations within the Site boundary that have samples remaining in place.

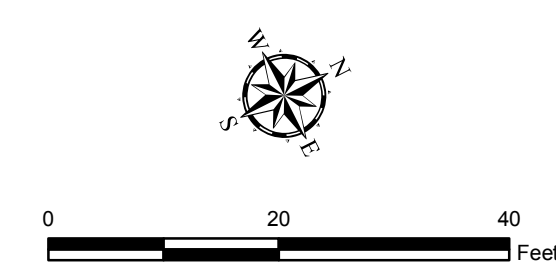
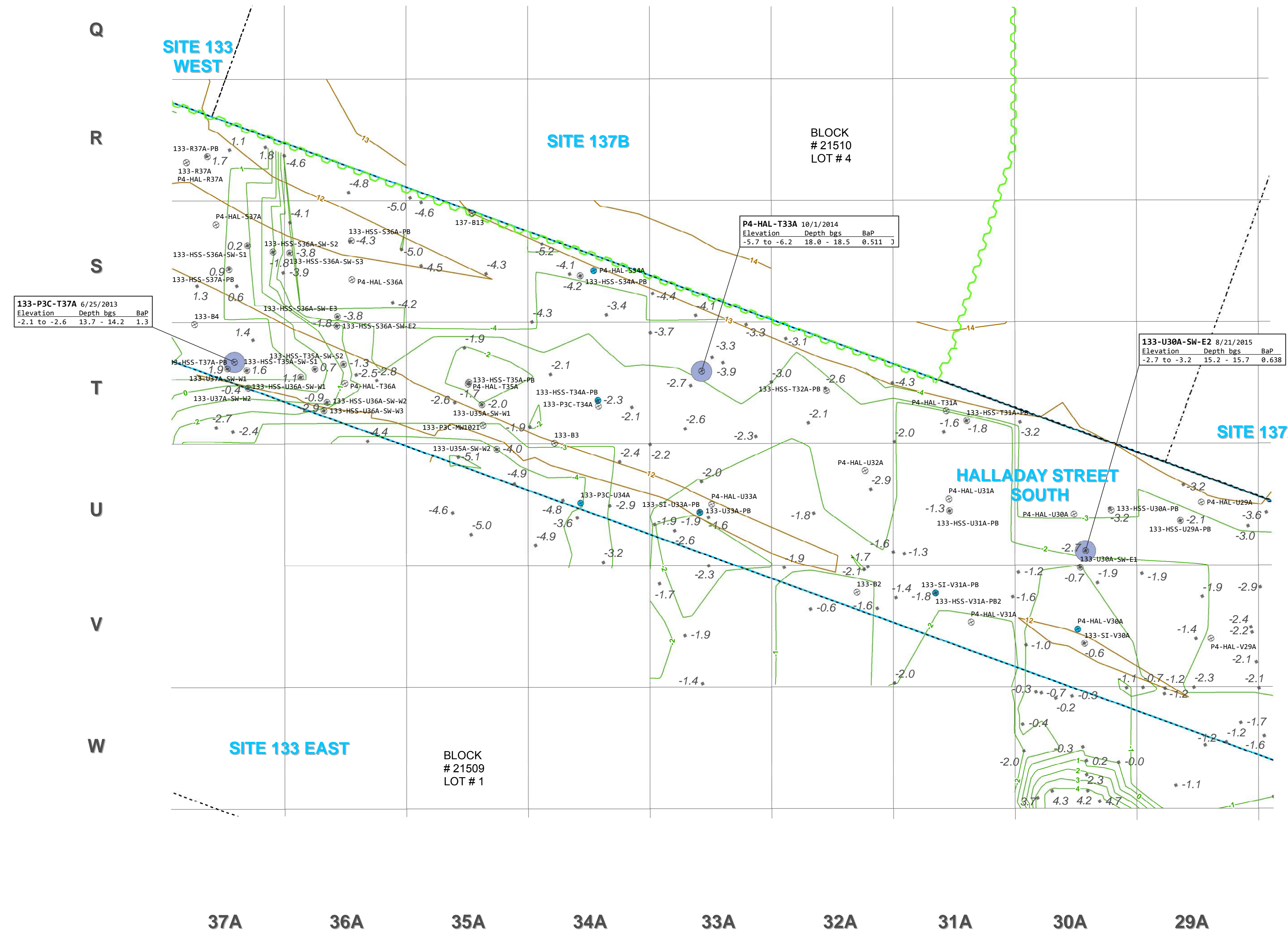
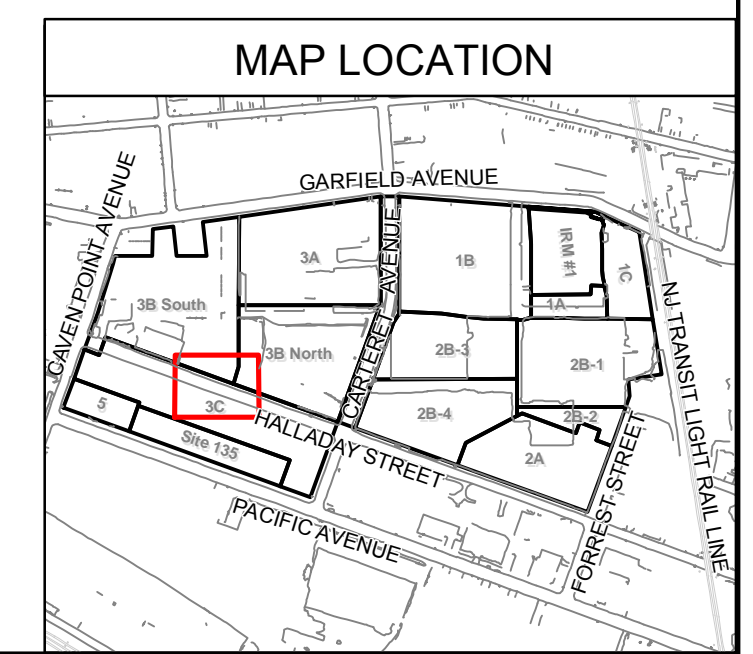
SPECIFIC NOTES:
 S1. Property lines and pre-construction topographical contours are sourced from the "Boundary & Topographical Survey, PPG Site, Lot 5, Block 21510, Jersey City, Hudson County, New Jersey" prepared by Borbas Surveying and Mapping, LLC, dated May 30, 2014.
 S2. Post-excavation elevation survey points were taken from the "Post Excavation Elevation Plan for ENTACT, LLC; PPG SITE 133/135 HSS 133E 135 ASM EXCAVATION," produced by Maser Consulting P.A., dated 05/09/18.
 S3. Conceptual post-excavation elevation contours were generated using professional judgement based on post-excavation elevation survey points and knowledge of excavation practices utilized during remedial excavation (i.e., excavation conducted on a 30 ft by 30 ft basis).
 S4. The extent of excavation shown here represents the as-built terminal excavation elevation for remediation of Cr⁶, CCPW, non-Cr constituents, and concrete foundation removal.
 S5. In Grids R37A, T35A, U33A, and V31A, two sample locations are located adjacent; therefore, the sampling location symbols overlap on the figure.

LEGEND

⊗	SAMPLING LOCATION (REMAINING SAMPLES)	⊗ -3.8	POST-EXCAVATION ELEVATION SURVEY POINT REPRESENTING AS-BUILT TERMINAL EXCAVATION ELEVATION (FT NAVD88)	□	GRID LAYOUT
○	REMAINING SAMPLES NOT ANALYZED FOR PAHs	—	CONCEPTUAL POST-EXCAVATION ELEVATION CONTOUR (1-FOOT INTERVAL IN FT NAVD88)	▭	HALLADAY SOUTH STREET BOUNDARY
●	RESULT IS BELOW THE MOST STRINGENT STANDARD	—	IN PLACE SHEET PILE (AS OF OCTOBER 2017)	---	PROPERTY LINE
●	RESULTS EXCEED THE MOST STRINGENT STANDARD, BUT ARE IN COMPLIANCE WITH REMEDIATION OBJECTIVES	---	PRE-REMEDIATION ELEVATION CONTOUR (1-FOOT INTERVAL IN FT NAVD88)	---	REMOVED SHEET PILE
■	BENZO(A)PYRENE (BaP)				

Soil Remediation Standards (mg/kg)

Analyte	RDCRS	NRDCRS
2-METHYLNAPHTHALENE	230	2400
BENZO(A)ANTHRACENE	5	17
BENZO(A)PYRENE	0.5	2
BENZO(B)FLUORANTHENE	5	17
DIBENZO(A,H)ANTHRACENE	0.5	2
INDENO(1,2,3-CD)PYRENE	5	17
NAPHTHALENE	6	17



PPG
 HALLADAY STREET SOUTH
 GARFIELD AVENUE GROUP
 JERSEY CITY, NEW JERSEY

HALLADAY STREET SOUTH (COLUMN 29A TO 37A)
 SAMPLE MAP FOR SELECT PAHs
 COMPARED TO SOIL REMEDIATION STANDARDS

DATE: 05/30/2018

FIGURE 5-4B



Path: P:\Jobs\133_HSS\133_HSS_S000001\Fig5-4B_S000001.dwg
 Plot: P:\Jobs\133_HSS\133_HSS_S000001\Fig5-4B_S000001.dwg
 Date: 05/30/2018 10:00:00 AM
 User: jgarcia