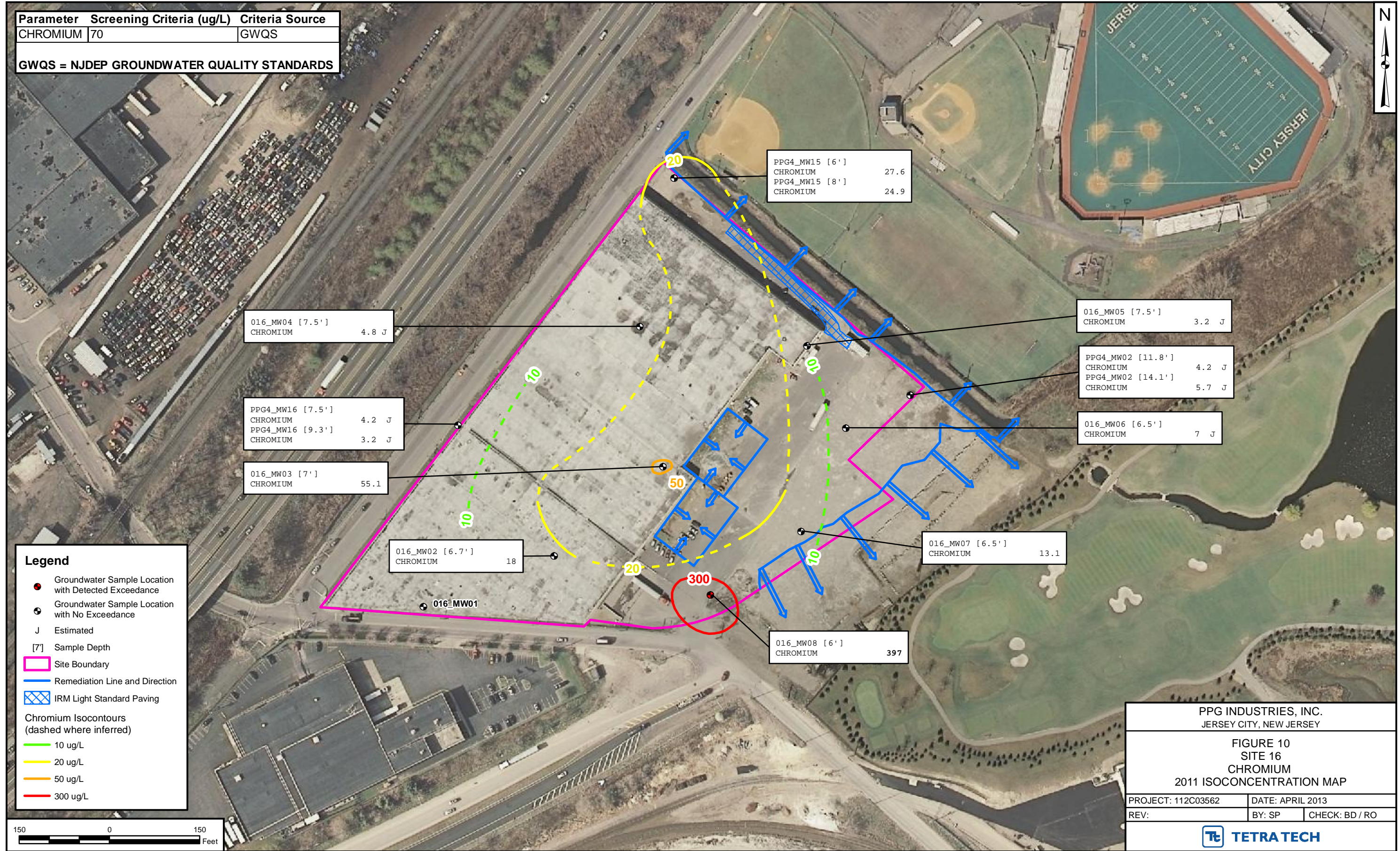


Parameter	Screening Criteria (ug/L)	Criteria Source
CHROMIUM	70	GWQS

GWQS = NJDEP GROUNDWATER QUALITY STANDARDS



PPG4_MW15 [6']
CHROMIUM 27.6
PPG4_MW15 [8']
CHROMIUM 24.9

016_MW04 [7.5']
CHROMIUM 4.8 J

016_MW05 [7.5']
CHROMIUM 3.2 J

PPG4_MW16 [7.5']
CHROMIUM 4.2 J
PPG4_MW16 [9.3']
CHROMIUM 3.2 J

PPG4_MW02 [11.8']
CHROMIUM 4.2 J
PPG4_MW02 [14.1']
CHROMIUM 5.7 J

016_MW03 [7']
CHROMIUM 55.1

016_MW06 [6.5']
CHROMIUM 7 J

016_MW02 [6.7']
CHROMIUM 18

016_MW07 [6.5']
CHROMIUM 13.1

016_MW08 [6']
CHROMIUM 397

Legend

- Groundwater Sample Location with Detected Exceedance
- Groundwater Sample Location with No Exceedance
- J Estimated
- [7'] Sample Depth
- Site Boundary
- Remediation Line and Direction
- IRM Light Standard Paving

Chromium Isoconcentrations (dashed where inferred)

- 10 ug/L
- 20 ug/L
- 50 ug/L
- 300 ug/L

PPG INDUSTRIES, INC.
JERSEY CITY, NEW JERSEY

FIGURE 10
SITE 16
CHROMIUM
2011 ISOCONCENTRATION MAP

PROJECT: 112C03562	DATE: APRIL 2013
REV:	BY: SP CHECK: BD / RO

TETRA TECH

