

LEGEND:

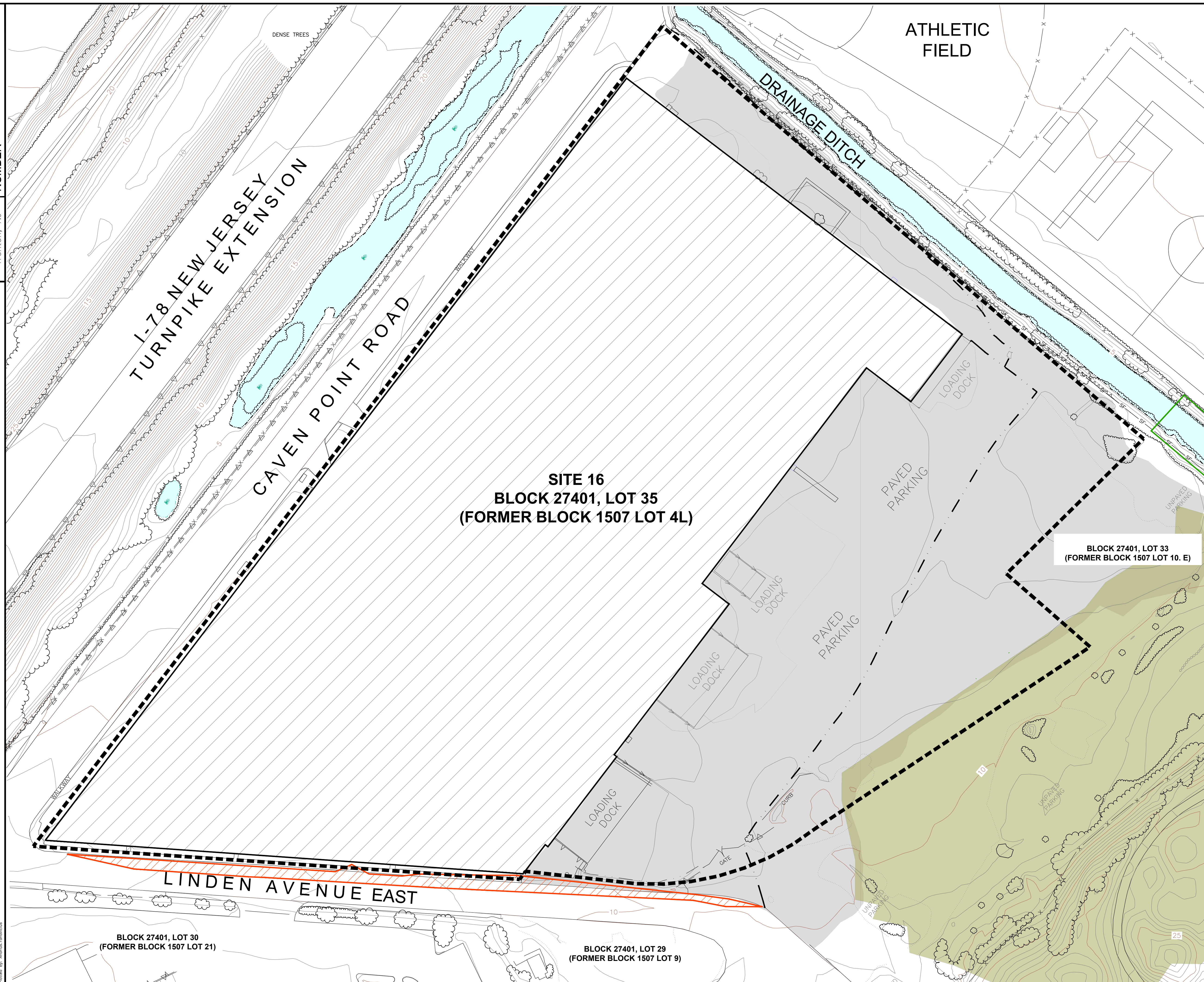
- SITE 16 PROPERTY BOUNDARY
- AOC-1: EXTERIOR SOIL
- PREVIOUSLY REMEDIATED SITE 112A AREA
- AOC-3: INTERIOR SOIL AND BUILDING FOOTER
- LINER INSTALLED BY AECOM, 2009
- EDGE OF PAVED ASPHALT
- CONTOUR LINE
- RETAINING WALL
- LOADING DOCK RETAINING WALL
- GUARDRAIL
- UNPAVED PARKING
- GATE
- FENCE
- WATER DITCH
- DRAINAGE DITCH
- LANDSCAPED DRAINAGE DITCH ON GOLF COURSE
- VEGETATION
- TREES
- GOLF TRAP

AOC AREAS:

- AOC-1: EXTERIOR SOIL (ONSITE)
- AOC-2: GROUNDWATER (SITE-WIDE)
- AOC-3: INTERIOR SOIL AND BUILDING FOOTING



Aptim Environmental & Infrastructure, Inc. 200 Horizon Center Trenton, New Jersey 08691							
DESIGNED BY:	M. Collier	DRAWN BY:	A.Y.	CHECKED BY:	K. Treacy	APPROVED BY:	C. Leavy
				PPG INDUSTRIES, INC. JERSEY CITY, NEW JERSEY			
				FIGURE 3 AOC MAP HCC SITE 16 45 LINDEN AVENUE EAST JERSEY CITY, NEW JERSEY			
DATE:	9/27/18	SCALE:	AS SHOWN	DRAWING NO.:	146429-D5_D_N	SHEET NO.:	1 OF 2



LEGEND:

- SITE 16 PROPERTY BOUNDARY
- AOC-1: EXTERIOR SOIL
- PREVIOUSLY REMEDIATED SITE 112A AREA
- AOC-3: INTERIOR SOIL AND BUILDING FOOTER
- AOC-4: PORTION OF LINDEN AVENUE EAST
- EDGE OF PAVED ASPHALT
- CONTOUR LINE
- RETAINING WALL
- LOADING DOCK RETAINING WALL
- GUARDRAIL
- UNPAVED PARKING
- GATE
- FENCE
- WATER DITCH
- DRAINAGE DITCH
- LANDSCAPED DRAINAGE DITCH ON GOLF COURSE
- VEGETATION
- TREES
- GOLF TRAP

AOC AREAS:

- AOC-1: EXTERIOR SOIL (ONSITE)
- AOC-2: GROUNDWATER (SITE-WIDE)
- AOC-3: INTERIOR SOIL AND BUILDING FOOTING
- AOC-4: PORTION OF LINDEN AVENUE EAST



Aptim Environmental & Infrastructure, Inc. 200 Horizon Center Trenton, New Jersey 08691		
DESIGNED BY:	M. Collier	PPG INDUSTRIES, INC. JERSEY CITY, NEW JERSEY
DRAWN BY:	A.Y.	FIGURE 3 AOC MAP
CHECKED BY:	K. Treacy	HCC SITE 16 45 LINDEN AVENUE EAST JERSEY CITY, NEW JERSEY
APPROVED BY:	C. Leavy	DATE: 9/27/18
SCALE:	AS SHOWN	DRAWING NO. 146429-D5_D_N
		SHEET NO. 2 OF 2