

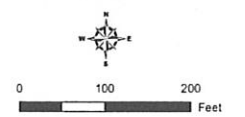
# **Appendix G**

## **Utility Maps**



- B10**
- Air Release Chamber
  - Sanitary Manhole
  - Combined Waste Water Main
  - Sanitary Structure
  - Outfall
  - Access Manhole
  - Sewage Main
  - BMUA Service Area
  - Municipal Border
  - Pump Station
  - IO Manhole
  - Storm Runoff Main
  - Drainage Inlet
  - Storm Manhole
  - Force Main
  - Inlet Chamber
  - Netting Chamber

**BAYONNE MUNICIPAL UTILITIES AUTHORITY**  
 HUDSON COUNTY, NEW JERSEY  
**SANITARY SEWER COLLECTION SYSTEM**



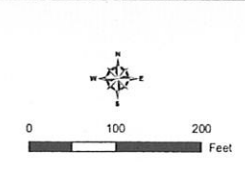
	B07	C07
A08	B08	C08
A09	B09	C09
A10	B10	C10





- B10**
- Gate House
  - Interconnection
  - Pressure Reducing Valve
  - Storage Tank
  - Water Meter
  - Water Valve
  - Fire Hydrant
  - Cap
  - Reducer
  - Water Main
  - BMUA Service Area
  - Municipal Border

**BAYONNE MUNICIPAL UTILITIES AUTHORITY**  
 HUDSON COUNTY, NEW JERSEY  
**WATER DISTRIBUTION SYSTEM**



	A09	B09	C09
A10			
	A11	B11	C11



MAP INDEX

2638

STREET

28-32 AVE C

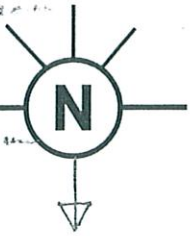
MUNICIPALITY

Dayonne

(5)-6

<input checked="" type="checkbox"/> MAIN INSTALLED		DATE
<input type="checkbox"/> MAIN RETIRED		DATE
FOOTAGE	SIZE	KIND
429	4"	PL
LEAK TICKET NO.		
EXPOSED PIPE		
LENGTH	SIZE	KIND
SIGNATURE		
Alvin Williams		

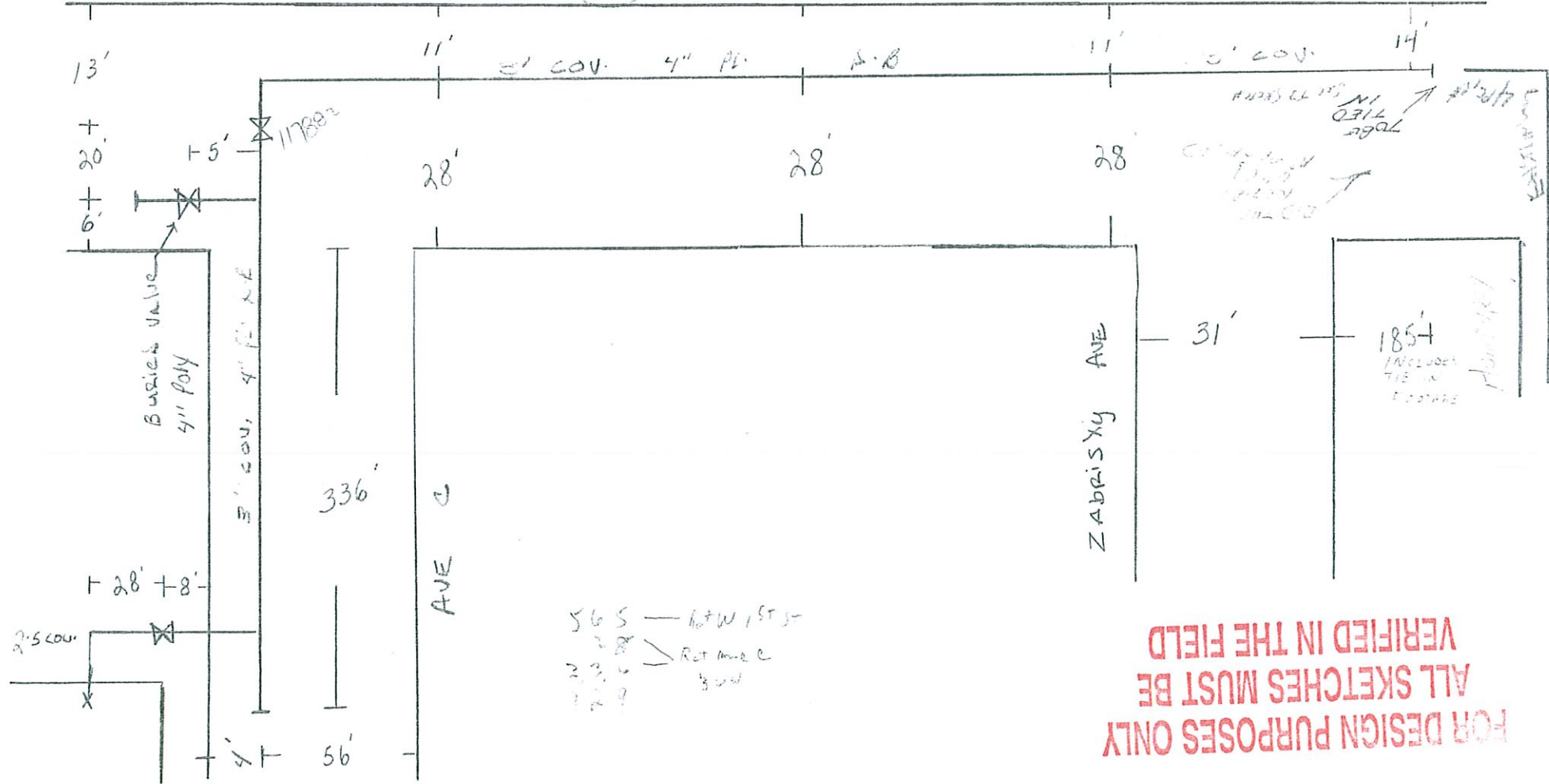
DATE 1-27-00  
 VALVE  
 VALVE



565'

1st

#04144725



**FOR DESIGN PURPOSES ONLY**  
**ALL SKETCHES MUST BE**  
**VERIFIED IN THE FIELD**

SKETCH OF MAIN INSTALLED OR RETIRED

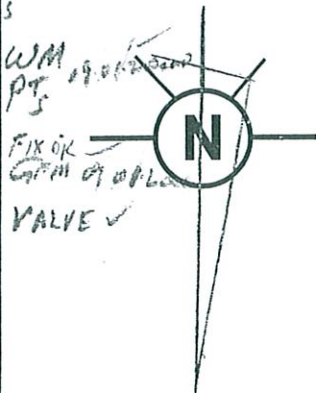
MAP INDEX 26 98  
XIF

STREET # 83-85 WEST 1ST STREET

MUNICIPALITY BAYONNE

6

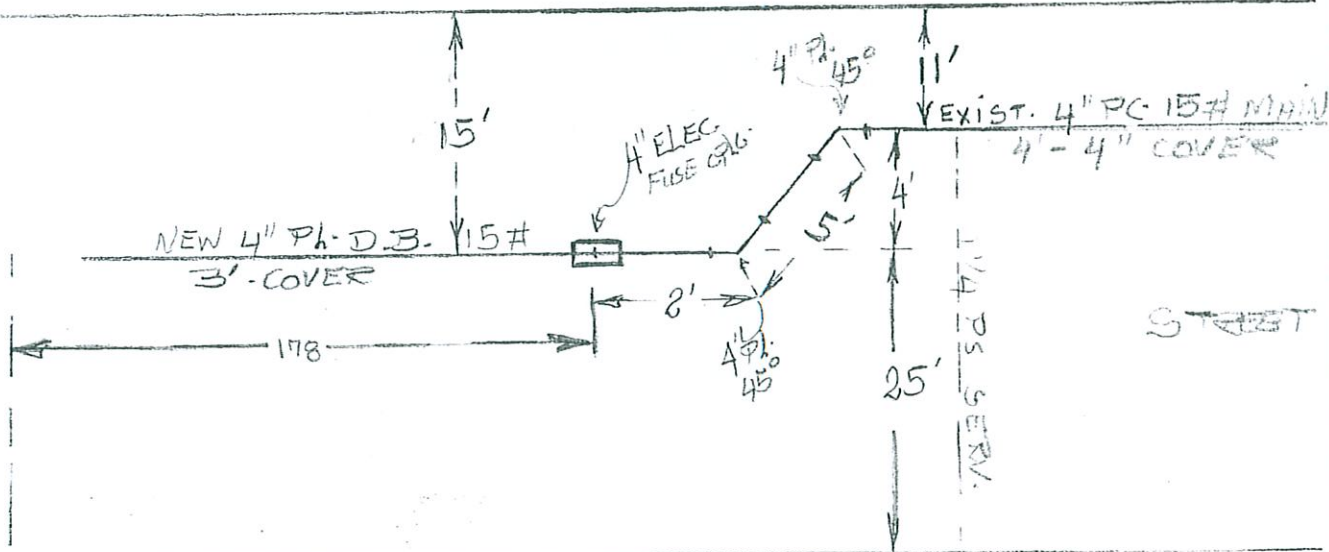
<input checked="" type="checkbox"/> MAIN INSTALLED		DATE 01-27-2000	
<input type="checkbox"/> MAIN RETIRED		DATE	
FOOTAGE	SIZE	KIND	
LEAK TICKET NO.			
EXPOSED PIPE			
LENGTH	SIZE	KIND	
SIGNATURE Bsgood H. Brownie			



04144725  
#WWS# 04150470

MAIN TIE IN 4" P.D. 15#  
USED TWO (2) 4" P.D. 45°  
AND ONE (1) 4" ELEC FUSE CRG.

WEST 1ST



STREET

ZABRISKIE  
AVE.

FOR DESIGN PURPOSES ONLY  
ALL SKETCHES MUST BE  
VERIFIED IN THE FIELD

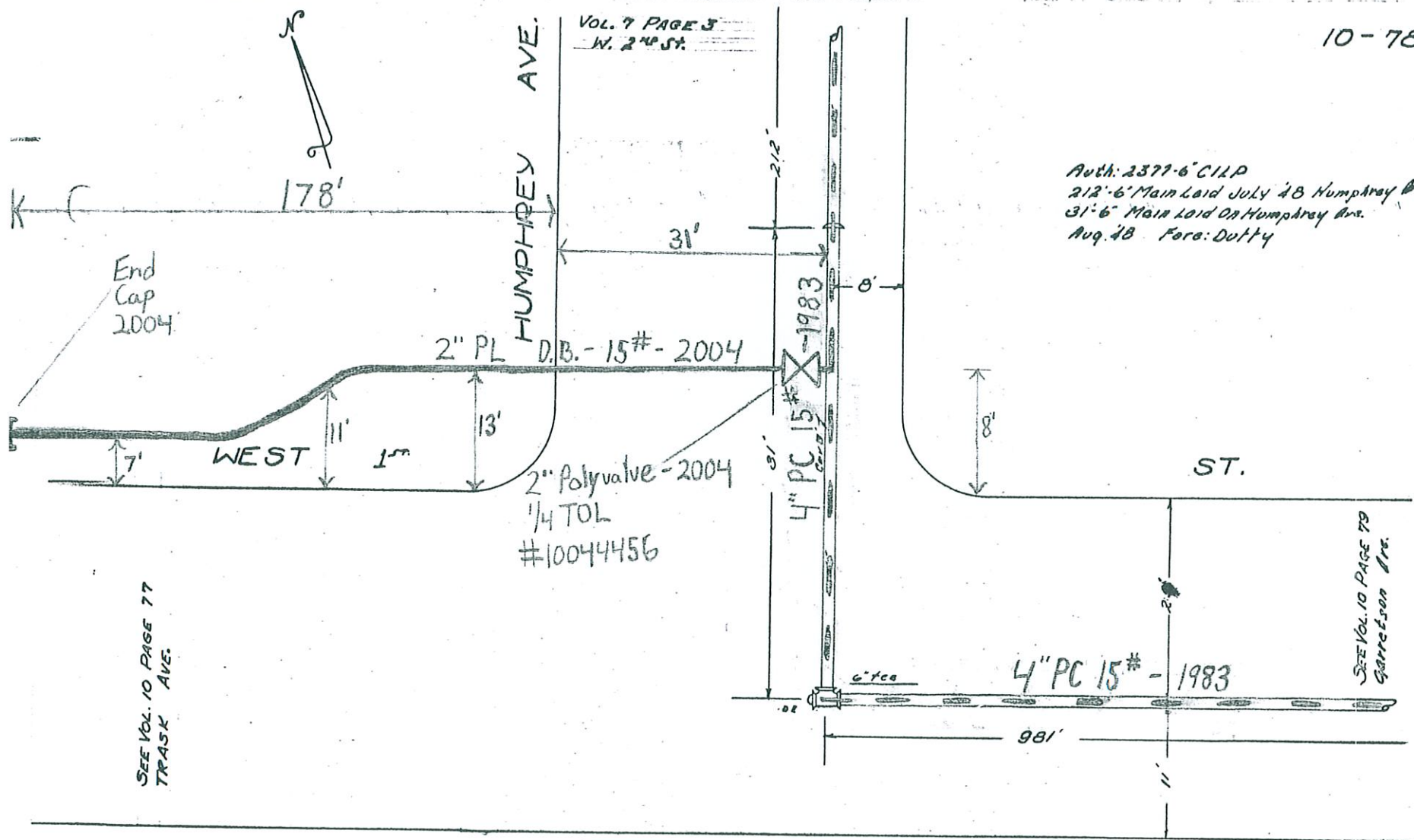
83-85  
EADG.#  
\* LAUNDRY

SKETCH OF MAIN INSTALLED OR RETIRED

10-78

# 8

VOL. 7 PAGE 3  
W. 2<sup>ND</sup> ST.



Auth: 2377-6' CILP  
 212'-6" Main Laid July '88 Humphrey Ave.  
 31'-6" Main Laid On Humphrey Ave.  
 Aug. '88 For: Duttty

SEE VOL. 10 PAGE 77  
 TRASK AVE.

SEE VOL. 10 PAGE 79  
 GARRETTSON AVE.

Auth: 2377-6' CILP  
 981'-0" Main Laid on W. 1<sup>ST</sup> ST.  
 981'-3" Main Qband. on W. 1<sup>ST</sup> ST.  
 Aug. '88 For: A St. George.

FOR DESIGN PURPOSES ONLY  
 ALL SKETCHES MUST BE  
 VERIFIED IN THE FIELD  
 Revised  
 2005

2H 38

Humphrey & W. 1<sup>st</sup> St

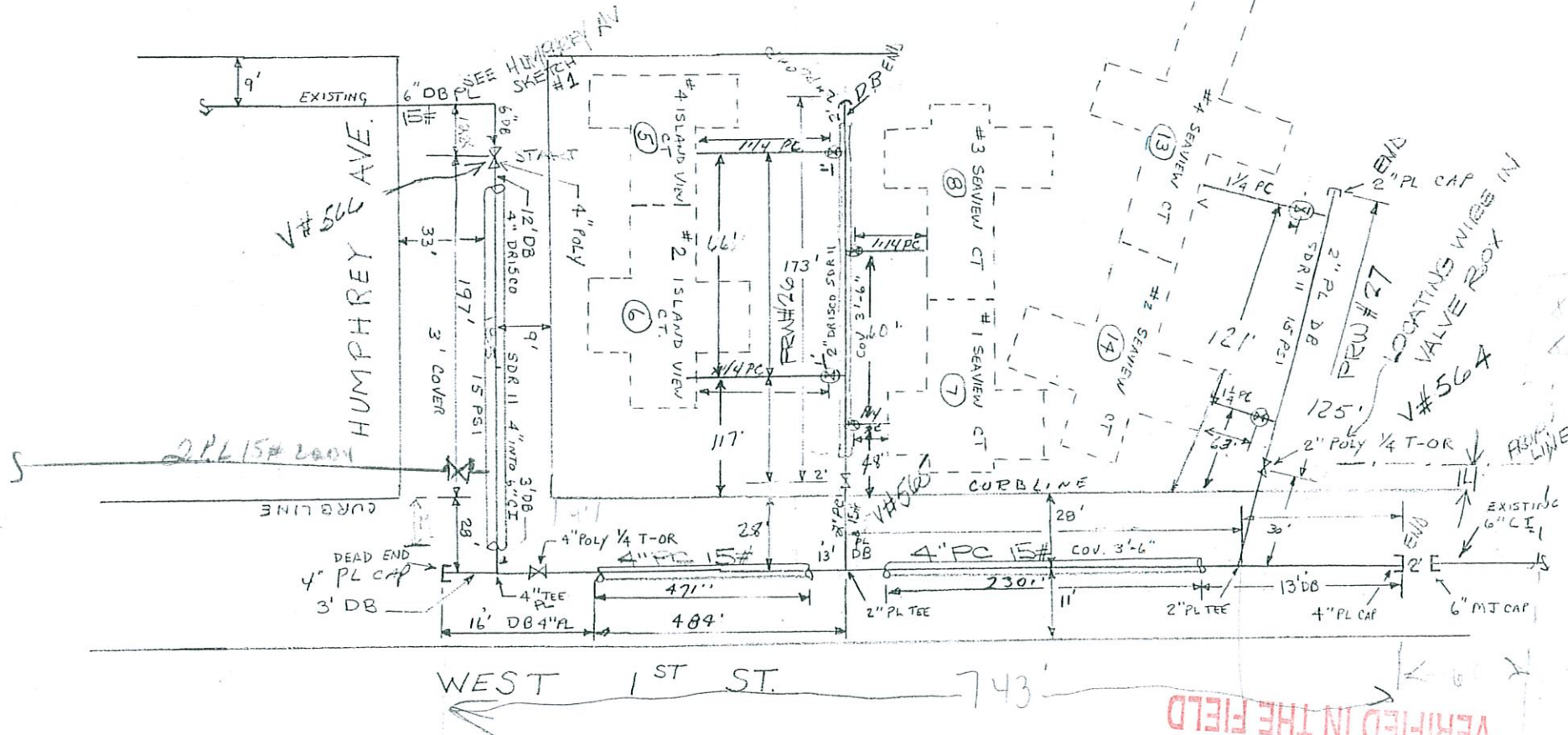
(204)

(4) (8)

210	4	PL	ON HUMPHREY AV
15	4	PL	ON W. 1 <sup>ST</sup> ST
701	4	PL	ON W. 1 <sup>ST</sup> ST
42	4	PL	ON W. 1 <sup>ST</sup> ST
100	1	PL	ROW 27 (42' PUBLIC, 113' PRIVATE FRG)

J. Scudato

WEST 2<sup>ND</sup> ST.



ALL SKETCHES MUST BE VERIFIED IN THE FIELD  
 DESIGN PURPOSES ONLY

Site 146  
Electrical



June 28, 2010

AECOM  
Attn: Christine Basinski  
30 Knightsbridge Road, Suite 520  
Piscataway, NJ 08854

**RE: NO UNDERGROUND ELECTRICAL FACILITIES IN YOUR PROJECT AREA:  
COMMENCE STREET AND NEW HOOK ROAD, BAYONNE**

Dear Christine,

We acknowledge receipt of your letter dated May 3, 2010, for your above mentioned project in Bayonne. There are no mainline underground facilities in your project area. The location of our overhead facilities should be obvious to your field personnel. All facilities must be field verified before any work commences.

Please be advised that records are not maintained for individual underground services from our overhead facilities because such services are normally owned by the customer. Should relocation of these types of services be required, it will be the responsibility of the requesting party to perform such relocation at their own expense.

If it becomes necessary for PSE&G to de-energize or relocate any electrical facilities, the party requesting such work will be responsible to pay all costs associated with the required work. Please allow a minimum of 2 months prior to your completion date for any work deemed necessary. In the event that such work is substantial, and the work will be scheduled in phases, allow a minimum of 2 months lead-time per phase.

Please do not consider your request for verification of our facilities as adequate application for new service or request for relocation of our facilities. To facilitate those needs you must contact our marketing department at 1-800-722-0256 to request that a DWMS Notification (Job) number be assigned. Without this notification number, PSE&G will not be able to do any work on this project.

A copy of your request has also been sent to our Relocation Recovery Group to determine if any portion of this project will be reimbursable to PSE&G. A representative from that office will be contacting you shortly to request additional information regarding this project.

Please be advised that the contractor will be responsible for any and all damages to our facilities in connection to this project; including but not limited to displacing, breaking, or paving over manhole frames and covers. In the event the manhole is paved over, causing the hole to become inaccessible or contaminated with paving material, the responsible contractor will be held liable for all restoration and cleaning costs in connection with all damages.



If the scope of your project does entail milling and paving, the following procedures must be adhered to;

Once the contract has been awarded, your contractor should:

- Contact Public Service Electric & Gas (Engineering) four to six weeks prior to milling to discuss the scope of the project. Sufficient lead-time is essential in obtaining materials and coordinating schedules between PSE&G and local paving projects.
- Provide milling schedule. Project-specific dates are required in hard copy.
- Conduct a walk-through with job sponsor to identify resets and/or replacements. Please be advised that the final decision to replace facilities due to its condition resides with PSE&G.
- Provide reset elevations to PSE&G contractor.

Once this information is received, the PSE&G job sponsor will order material (if required) in accordance with the vendor's lead-time and schedule our contractor to complete manhole resets or replacements immediately following the milling process.

Please bring to your contractor's attention The New Jersey High Voltage Proximity Act, codified at NJSA 34:6-47 to 47.10 concerning precautions to be taken when working in proximity to high voltage wires. In addition, we also recommend that the contractor review the requirements for operators of construction equipment under the Occupational Safety and Health Act of 1970 (OSHA), and of Subpart "N", paragraph 1926.550 of the Rules and Regulations codified at 29 CFR 1926.550, which in part, required different working clearances than the State Law. Additionally The Underground Facility Protection Act, codified at NJSA 48:2-73 to 91, which requires excavators to notify the New Jersey One Call Center at least three (3) business days prior to excavation. The New Jersey One Call Center can be reached at 1-800-272-1000.

If you should have any questions concerning the project, please contact Lyn Galli at 1-201-330-6426.

Sincerely,



Robert Celestine  
Sr. Engineering Plant Supervisor  
Palisades Division – Electric Delivery  
Public Service Electric & Gas Co.

RC:daa