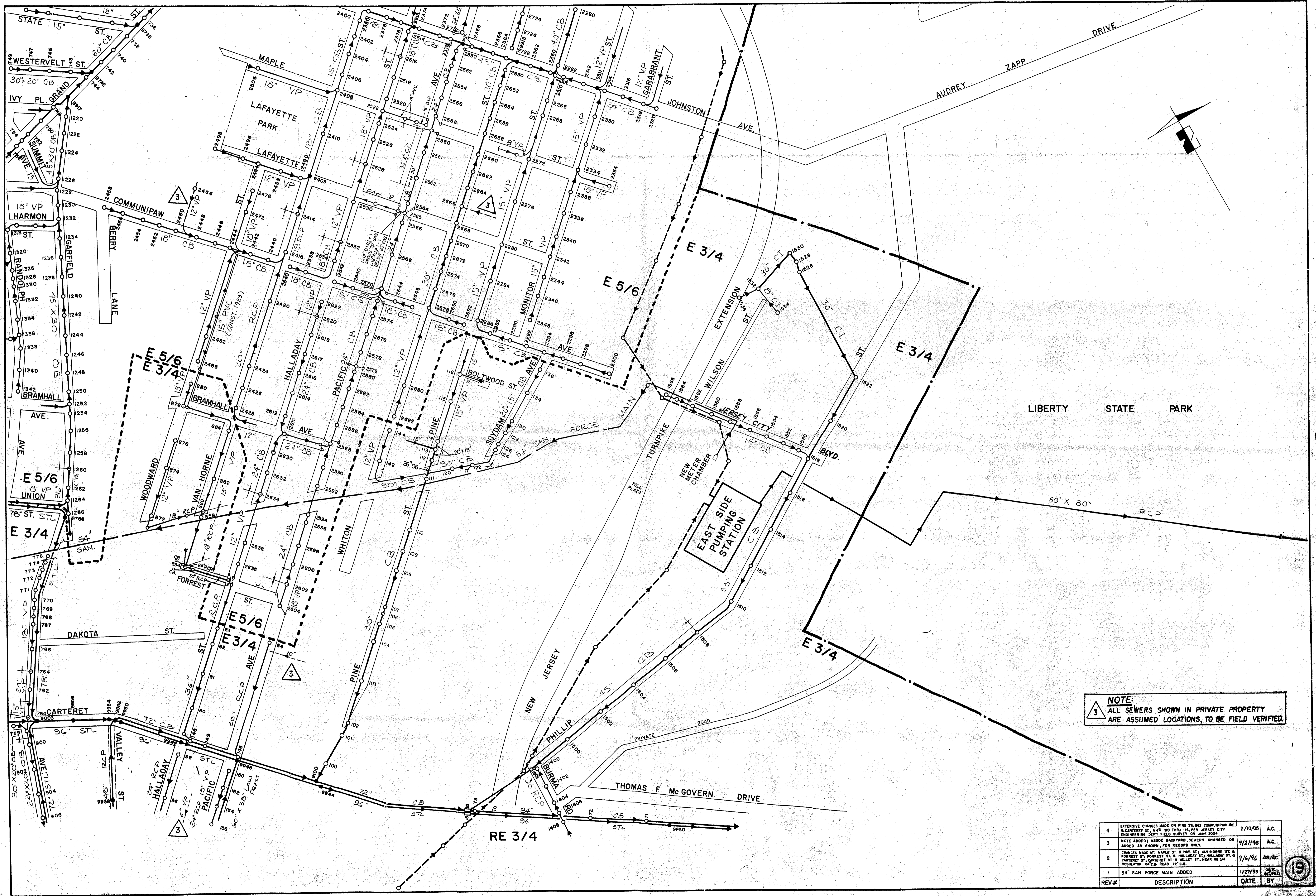


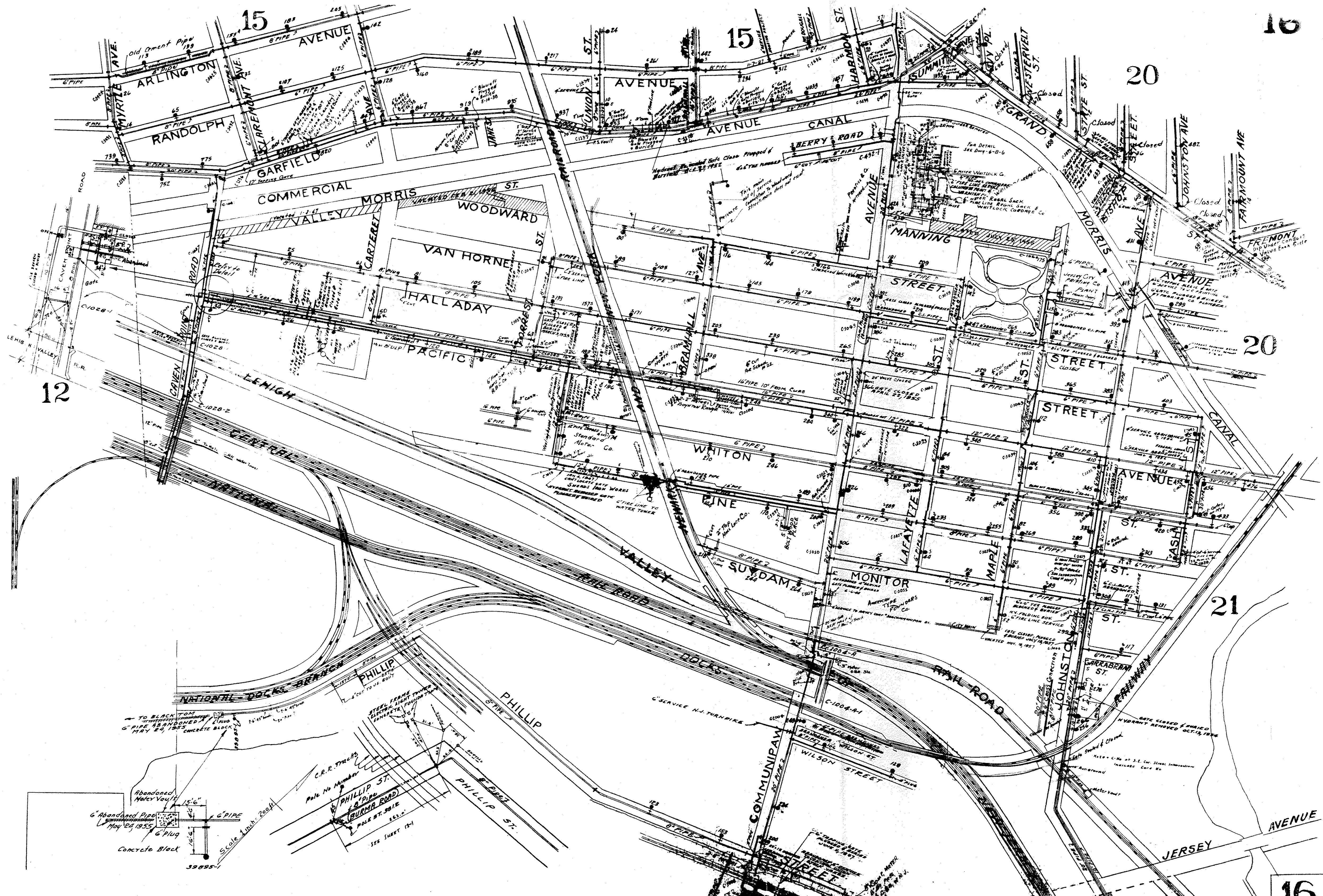
## **Appendix F**

### **Utility Maps**



**NOTE:**  
 3 ALL SEWERS SHOWN IN PRIVATE PROPERTY ARE ASSUMED LOCATIONS, TO BE FIELD VERIFIED.

REV#	DESCRIPTION	DATE	BY
4	EXTENSIVE CHANGES MADE ON PINE ST, WET COMMUNIPAW AVE, & CARTERET ST, W/3' 100 THRU 118', PER JERSEY CITY ENGINEERING DEPT. FIELD SURVEY ON JUNE 2004.	2/10/05	A.C.
3	NOTE ADDED: ASSOC. BACKYARD SEWERS CHANGED OR ADDED AS SHOWN, FOR RECORD ONLY.	7/21/98	A.C.
2	CHANGES MADE: JET MAPLE ST @ PINE ST; VAN-HORNE ST @ FOREST ST; FOREST ST @ HALLADAY ST; HALLADAY ST @ CARTERET ST; CARTERET ST @ VALLEY ST; NEAR RE VA REGULATOR 84" C.B. READ 72" C.B.	7/4/96	AS/AC
1	54" SAN FORCE MAIN ADDED.	1/27/93	AS/AC



15

15

16

20

20

12

21

16