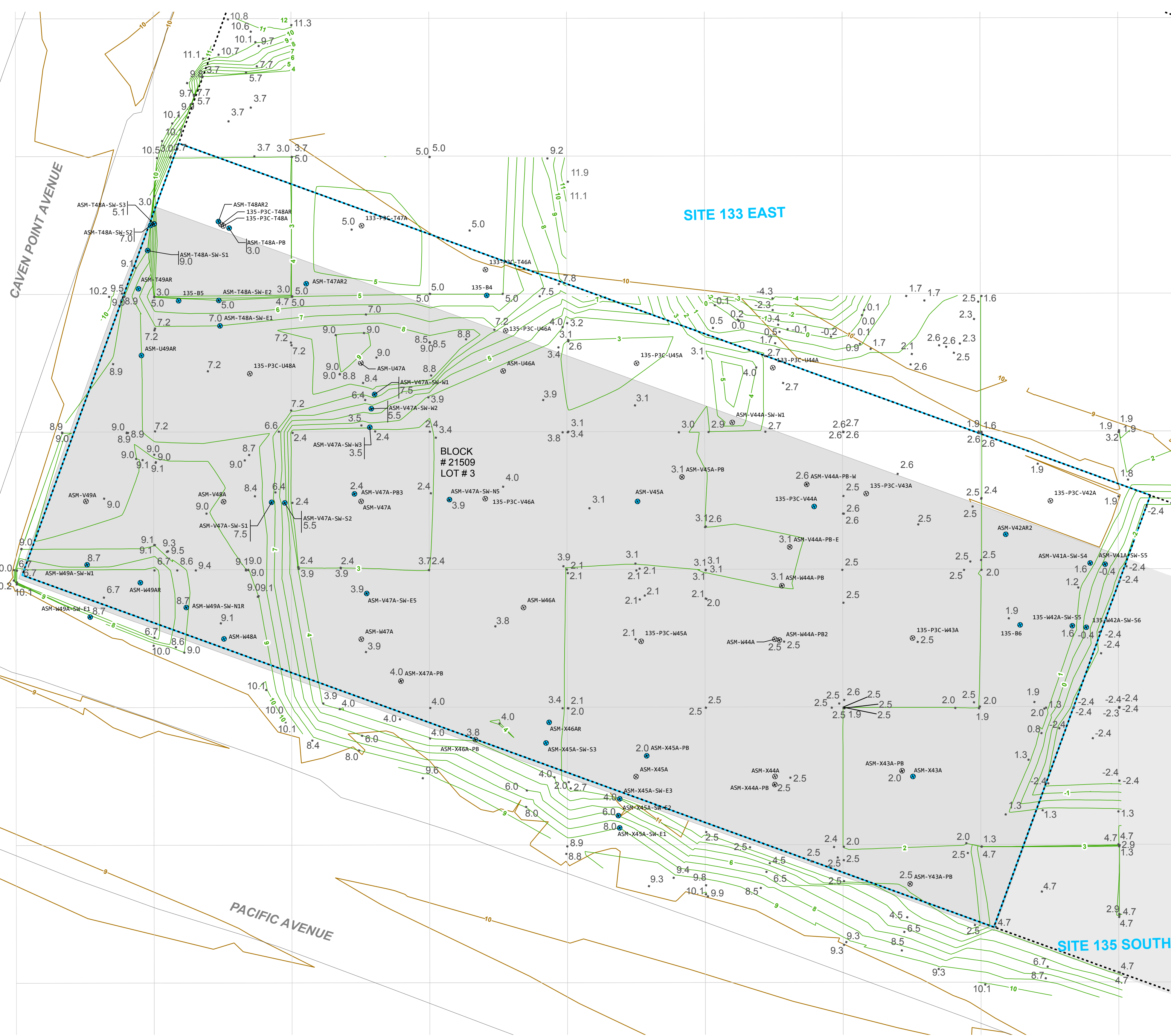


S
T
U
V
W
X
Y
Z



SITE 133 EAST

BLOCK # 21509 LOT # 3

SITE 135 SOUTH

ABBREVIATIONS:
 CCPW - Chromate Chemical Production Waste
 Cr⁺³ - trivalent chromium
 Cr⁺⁶ - hexavalent chromium
 Cr - chromium
 ft - feet
 mg/kg - milligrams per kilogram
 N/A - not applicable
 NAVD88 - North American Vertical Datum of 1988
 NJDEP - New Jersey Department of Environmental Protection
 NRDCSRS - New Jersey Department of Environmental Protection Non-Residential Direct Contact Soil Remediation Standard
 RDCSRS - New Jersey Department of Environmental Protection Residential Direct Contact Soil Remediation Standard
 RDCSRS-GAG - Residential Direct Contact Soil Remediation Standard - Garfield Avenue Group (alternative remediation standard approved by the New Jersey Department of Environmental Protection on December 28, 2016)
 SCC - Soil Cleanup Criteria
 SRS - Soil Remediation Standard

GENERAL NOTES:
 G1. The CCPW data associated with the sample locations shown on this figure are provided in Table 5-2. None of the detected CCPW results exceeded the standards.
 G2. Elevation vertical datum is NAVD88, in U.S. survey ft.
 G3. Source of block/lot information is Jersey City Parcel Data from New Jersey Geographic Information Network (NJGIN), last updated 10/6/2015 (available at: <http://data.jerseycitynj.gov/dataset/jersey-city-parcel-polygon>).
 G4. This figure presents data only for locations within the Site boundary that have samples remaining in place. In addition, locations from outside the Site boundary may be shown to demonstrate compliance with the remediation objectives. The Specific Notes on Table 5-2 include discussion of these situations, if necessary.
 G5. There is currently no NJDEP SRS and no NJDEP SCC for total Cr. Therefore, total Cr results are compared to the interim NJDEP Residential SCC for Cr⁺³ of 120,000 mg/kg as the cleanup criteria for soil at the Garfield Avenue Group Sites. There is no non-residential SCC for Cr⁺³.

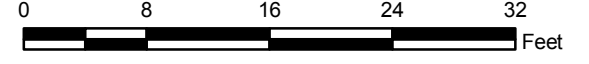
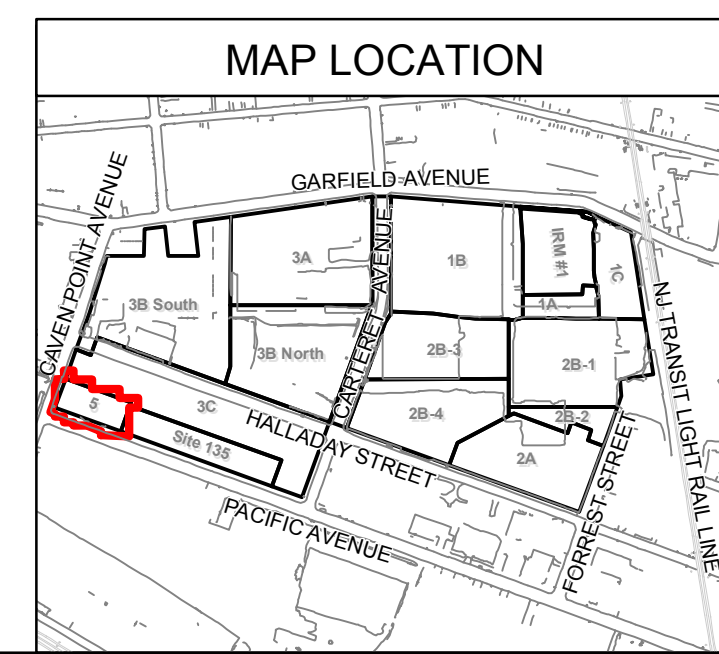
SPECIFIC NOTES:
 S1. Pre-construction topographical contours are sourced from the "Catch Basin-Receptor Evaluation Survey, PPG Site 114, City of Jersey City, Hudson County, New Jersey" prepared by Borbas Surveying and Mapping, LLC, dated April 19, 2011. Property lines are sourced from the "Boundary and Line Delineation Map, PPG Site, Lot 1 & 2, Block 21509, Jersey City, Hudson County, New Jersey" prepared by Borbas Surveying and Mapping, LLC, dated July 21, 2014 and from the "Map of Survey of Property Located at Lots 2 & 3, in Block 21509 (Prior Block 2017, Lots 69 & A1) Jersey City, Hudson County, New Jersey, 33 & 51-91 Pacific Avenue, Jersey City NJ" prepared by Caulfield Associates, LLP, dated October 22, 2013.
 S2. Post-excavation elevation survey points were taken from the "Post Excavation Elevation Plan for ENTACT, LLC, PPG SITE 133/135 HSS 133E 135 ASH EXCAVATION," produced by Maser Consulting P.A., dated 05/09/18.
 S3. In some instances, conceptual post-excavation elevation contours were generated using professional judgement based on post-excavation elevation survey points and knowledge of excavation practices utilized during remedial excavation (i.e., excavation conducted on a 30 ft by 30 ft basis).
 S4. The extent of excavation shown here represents the as-built terminal excavation elevation for remediation of Cr⁺⁶, CCPW, non-Cr constituents, and concrete foundation removal.

LEGEND

○ REMAINING SAMPLES NOT ANALYZED FOR CCPW METALS	○ POST-EXCAVATION ELEVATION SURVEY POINT REPRESENTING AS-BUILT TERMINAL EXCAVATION ELEVATION	□ SITE BOUNDARY
⊙ SAMPLING LOCATION (REMAINING SAMPLES)	○ PRE-REMEDIATION ELEVATION CONTOUR (1-FOOT INTERVAL IN FT NAVD88)	□ GRID LAYOUT
● RESULT IS BELOW THE MOST STRINGENT STANDARD	○ POST-EXCAVATION ELEVATION CONTOURS (1-FOOT INTERVAL IN FT NAVD88)	■ FORMER BUILDING SLAB (AVERAGE ELEVATION 14.2 FT NAVD88)
	--- PROPERTY LINE	

Soil Remediation Standards (mg/kg)

Analyte	RDCSRS	RDCSRS-GAG	NRDCSRS
ANTIMONY	31	N/A	450
CHROMIUM	120000	N/A	N/A
NICKEL	1600	N/A	23000
THALLIUM	N/A	N/A	N/A
VANADIUM	N/A	390	1100



PPG
 AL SMITH MOVING
 GARFIELD AVENUE GROUP
 JERSEY CITY, NEW JERSEY
 DATE: 08/24/2018

AL SMITH MOVING
 SAMPLE MAP FOR CCPW METALS COMPARED
 TO SOIL REMEDIATION STANDARDS
 FIGURE 5-2