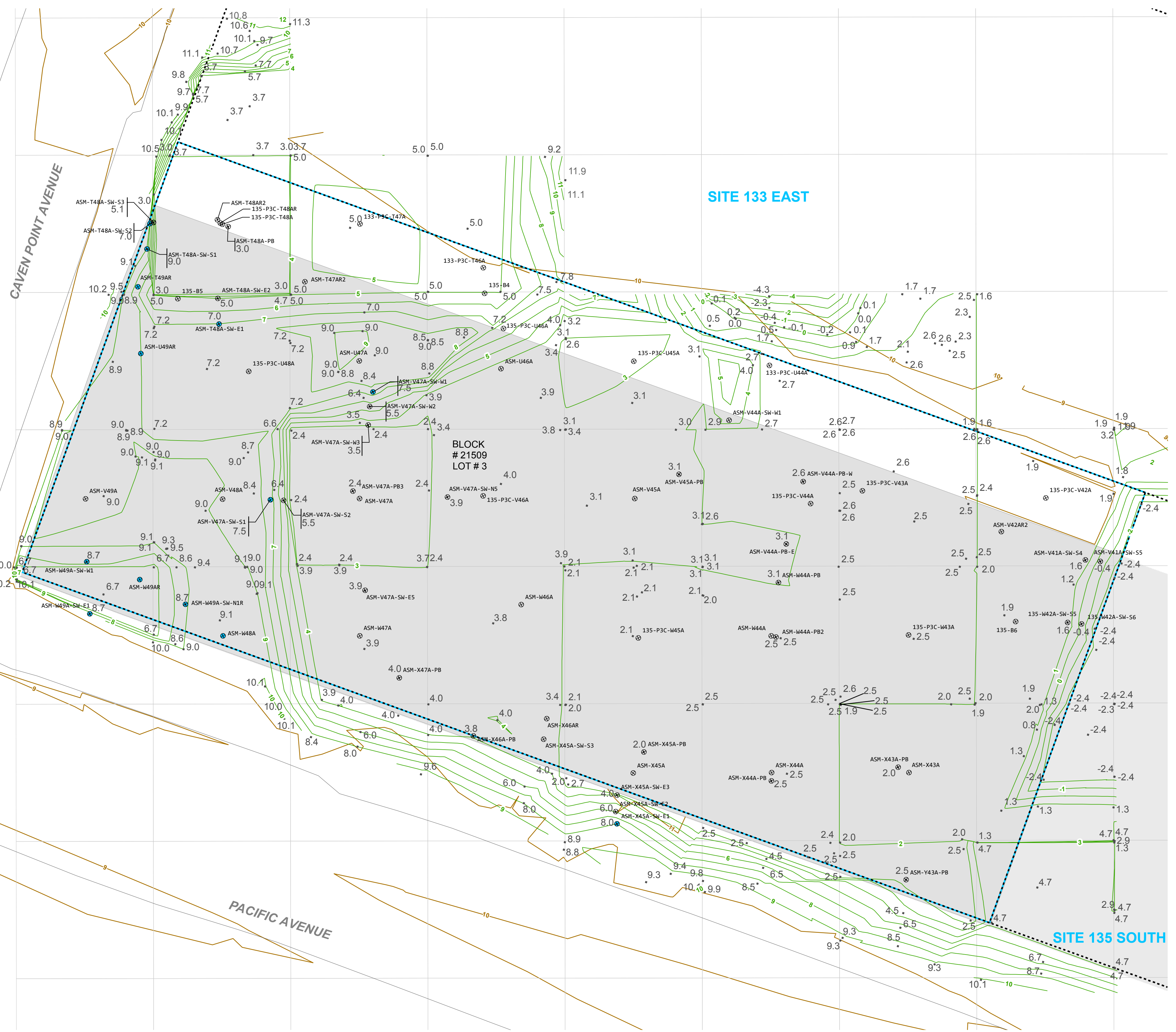


S
T
U
V
W
X
Y
Z



SITE 133 EAST

BLOCK #21509 LOT #3

SITE 133 SOUTH

49A 48A 47A 46A 45A 44A 43A 42A 41A

CAVEN POINT AVENUE

PACIFIC AVENUE

ABBREVIATIONS:
 CCPW - Chromate Chemical Production Waste
 Cr⁶ - hexavalent chromium
 Cr - chromium
 DIGWSSL - Default Impact to Groundwater Soil Screening Level
 ft - feet
 IGW - Impact to Groundwater
 IGWRSR-GAG - Impact to Groundwater Soil Remediation Standard - Garfield Avenue Group (site-specific alternative remediation standard as proposed in the Supplemental Soil Remedial Investigation Report, Final Revision 1, PPG Garfield Avenue Group, Hudson County Chromium Sites, Jersey City, New Jersey, AECOM, 08/30/18 and approved by NJDEP on 10/22/18)
 mg/kg - milligram per kilogram
 N/A - not applicable
 NAVD88 - North American Vertical Datum of 1988

GENERAL NOTES:
 G1. The CCPW metals data associated with the sample locations shown on this figure are provided in Table 5-3. None of the detected CCPW results exceeded the standards.
 G2. Elevation vertical datum is NAVD88, in U.S. survey ft.
 G3. Source of block/lot information is Jersey City Parcel Data from New Jersey Geographic Information Network (NJGIN), last updated 10/6/2015 (available at: <http://data.jerseycitynj.gov/dataset/jersey-city-parcel-polygon>).
 G4. This figure presents data only for locations within the Site boundary that have samples remaining in place.

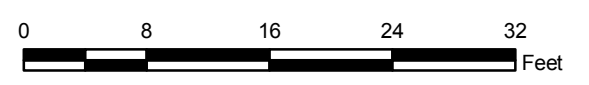
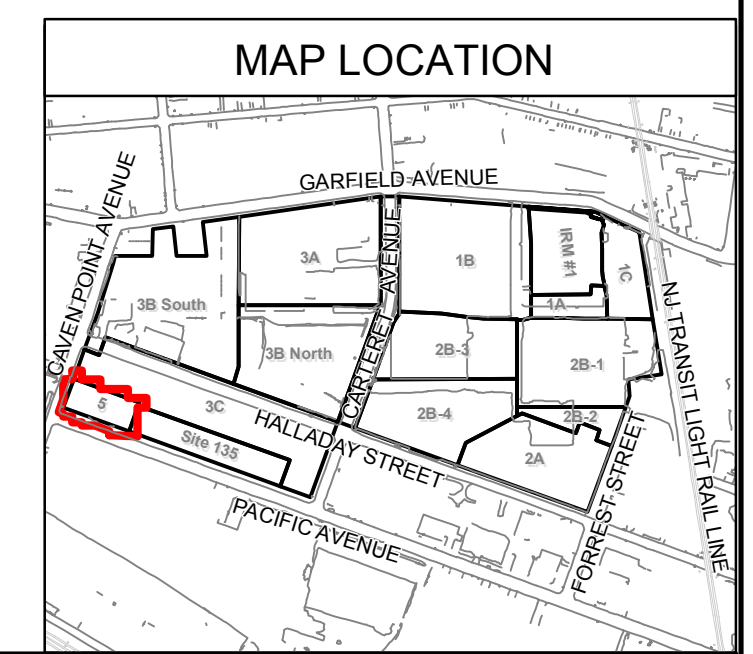
SPECIFIC NOTES:
 S1. Pre-construction topographical contours are sourced from the "Catch Basin-Receptor Evaluation Survey, PPG Site 114, City of Jersey City, Hudson County, New Jersey" prepared by Borbas Surveying and Mapping, LLC, dated April 19, 2011. Property lines are sourced from the "Boundary and Line Delineation Map, PPG Site, Lot 1 & 2, Block 21509, Jersey City, Hudson County, New Jersey" prepared by Borbas Surveying and Mapping, LLC, dated July 21, 2014 and from the "Map of Survey of Property Located at Lots 2 & 3, in Block 21509 (Prior Block 2017, Lots 69 & A1) Jersey City, Hudson County, New Jersey, 33 & 51-91 Pacific Avenue, Jersey City NJ" prepared by Caulfield Associates, LLP, dated October 22, 2013.
 S2. Post-excavation elevation survey points were taken from the "Post Excavation Elevation Plan for ENTACT, LLC; PPG SITE 133/135 HSS 133E 135 ASM EXCAVATION," produced by Maser Consulting P.A., dated 05/09/18 with revisions.
 S3. Conceptual post-excavation elevation contours were generated using professional judgement based on post-excavation elevation survey points and knowledge of excavation practices utilized during remedial excavation (i.e., excavation conducted on a 30 ft by 30 ft basis).
 S4. The extent of excavation shown here represents the as-built terminal excavation elevation for remediation of Cr⁶, CCPW, non-Cr constituents, and concrete foundation removal.

LEGEND

- REMAINING SAMPLES NOT ANALYZED FOR CCPW METALS
- ⊙ SAMPLING LOCATION (REMAINING SAMPLES)
- RESULT IS BELOW THE MOST STRINGENT STANDARD
- POST-EXCAVATION ELEVATION SURVEY POINT REPRESENTING AS-BUILT TERMINAL EXCAVATION ELEVATION
- PRE-REMEDIATION ELEVATION CONTOUR (1-FOOT INTERVAL IN FT NAVD88)
- POST-EXCAVATION ELEVATION CONTOURS (1-FOOT INTERVAL IN FT NAVD88)
- PROPERTY LINE
- SITE BOUNDARY
- GRID LAYOUT
- FORMER BUILDING SLAB (AVERAGE ELEVATION 14.2 FT NAVD88)

Soil Screening Level & Soil Remediation Standards (mg/kg)

Analyte	DIGWSSL	IGWRSR-GAG
ANTIMONY	N/A	62.7
CHROMIUM	N/A	N/A
NICKEL	N/A	170
THALLIUM	3	N/A
VANADIUM	N/A	N/A



PPG
 AL SMITH MOVING
 GARFIELD AVENUE GROUP
 JERSEY CITY, NEW JERSEY

DATE: 04/02/2019

AL SMITH MOVING
 SAMPLE MAP FOR CCPW METALS IN THE
 UNSATURATED SOIL ZONE COMPARED TO
 IGW SOIL SCREENING LEVEL AND SOIL
 REMEDIATION STANDARDS

FIGURE 5-3