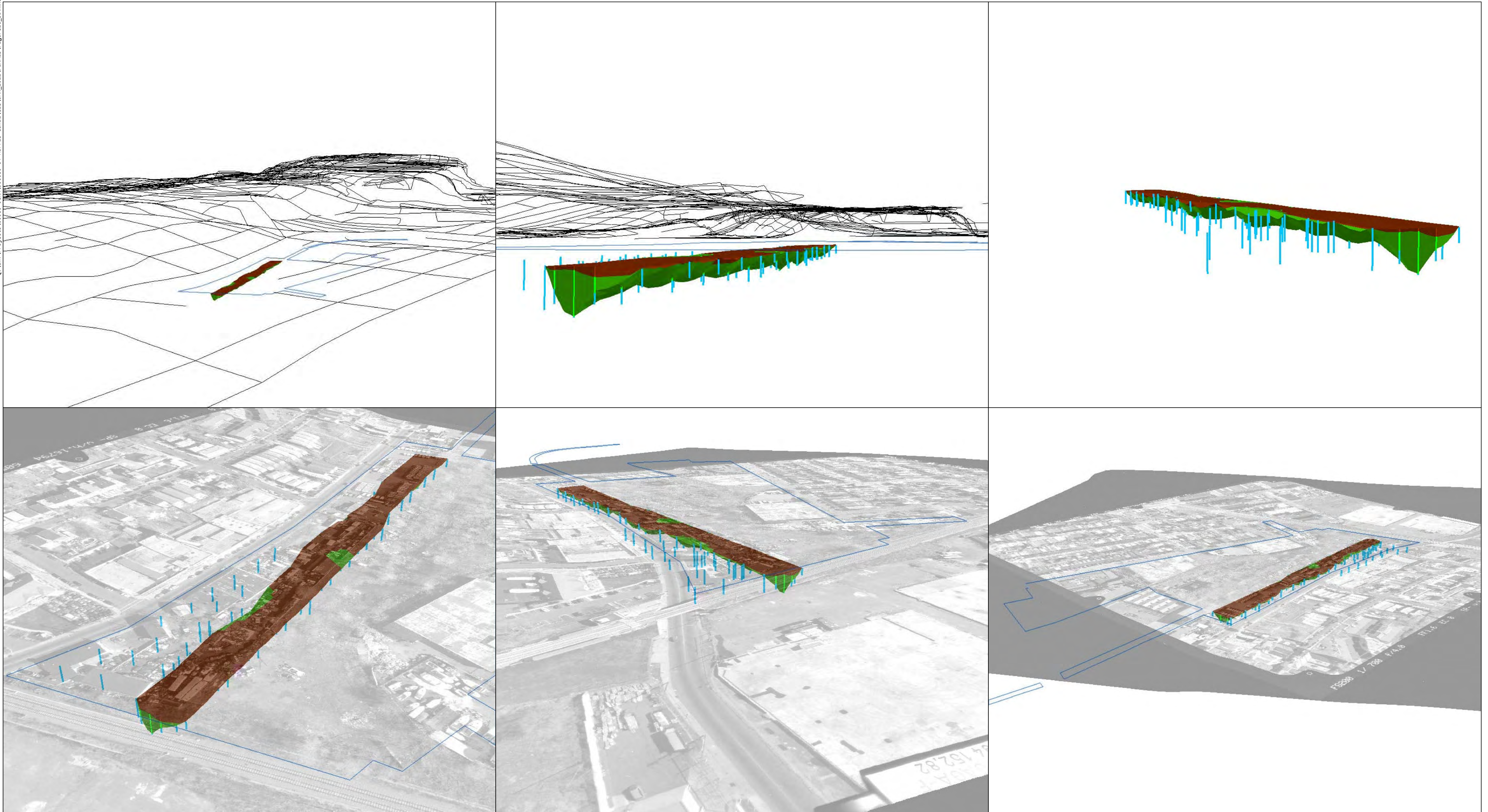


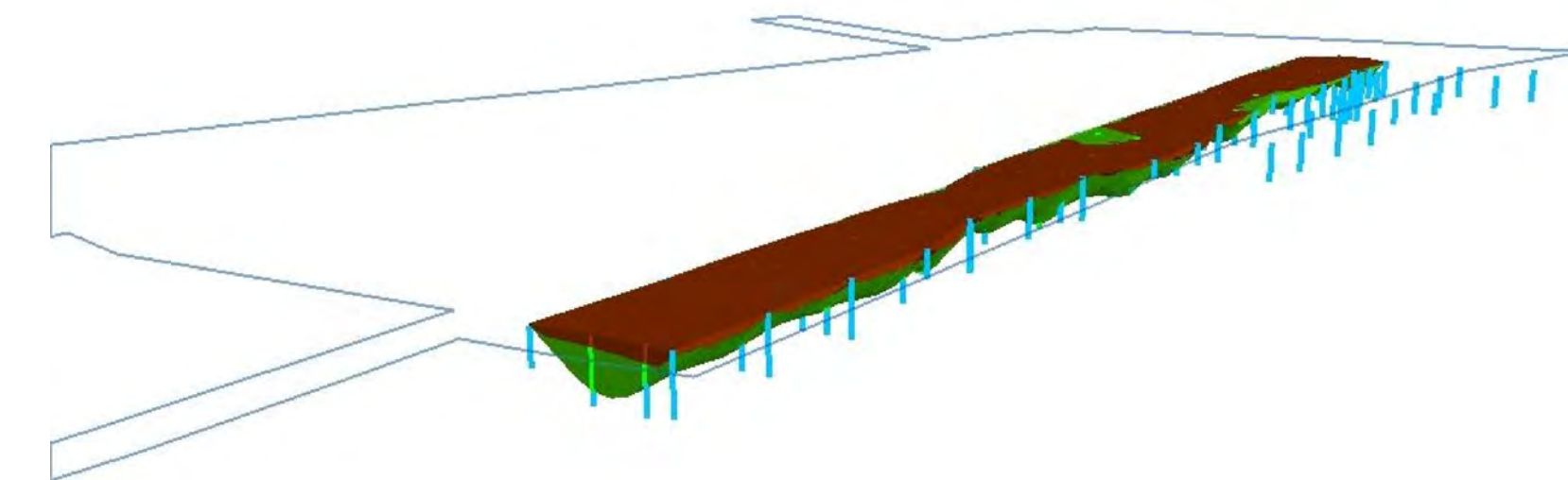
Q:\Env\Projects\09089 - CCA\1008989-64 Morris Canal\GIS\JAN\_2012\FINALS\Figure6\_3D.mxd



**LEGEND**

- OVERBURDEN
- SOIL PROPOSED FOR REMOVAL
- BERRY LANE PARK
- JERSEY CITY ROAD NETWORK
- SOIL INTERVAL <20 mg/kg HEXAVALENT CHROMIUM CONCENTRATION
- SOIL INTERVAL >20 mg/kg HEXAVALENT CHROMIUM CONCENTRATION

NOTES:  
 -HORIZONTAL DATUM: NAD83 (NORTH AMERICAN DATUM)  
 -VERTICAL DATUM: NAVD88 (NORTH AMERICAN VERTICAL DATUM)  
 -MODEL OF MORRIS CANAL PROPOSED EXCAVATION BASED ON SOIL SAMPLE ANALYTICAL RESULTS AND FIELD INVESTIGATION BORING LOGS.  
 -FEATURES ARE DISPLAYED WITH 5x VERTICAL EXAGGERATION  
 -SURFACE ELEVATIONS BASED ON DRESDNER ROBIN TOPOGRAPHICAL SURVEY.



PROJECT: <b>REMEDIAL INVESTIGATION</b>		
LOCATION: <b>BERRY LANE PARK</b>		
DRAWING TITLE: <b>3D GRAPHIC REPRESENTATION OF LIMIT OF EXCAVATION</b>		
<small>DRAWN BY:</small> N.K.	<small>JOB NUMBER:</small> B80-64	
<small>CHECKED BY:</small> D.N. / J.T.	<small>FILE:</small> Figure16.mxd	
<small>DATE:</small> 01/19/12	<small>FIGURE</small> 16	

