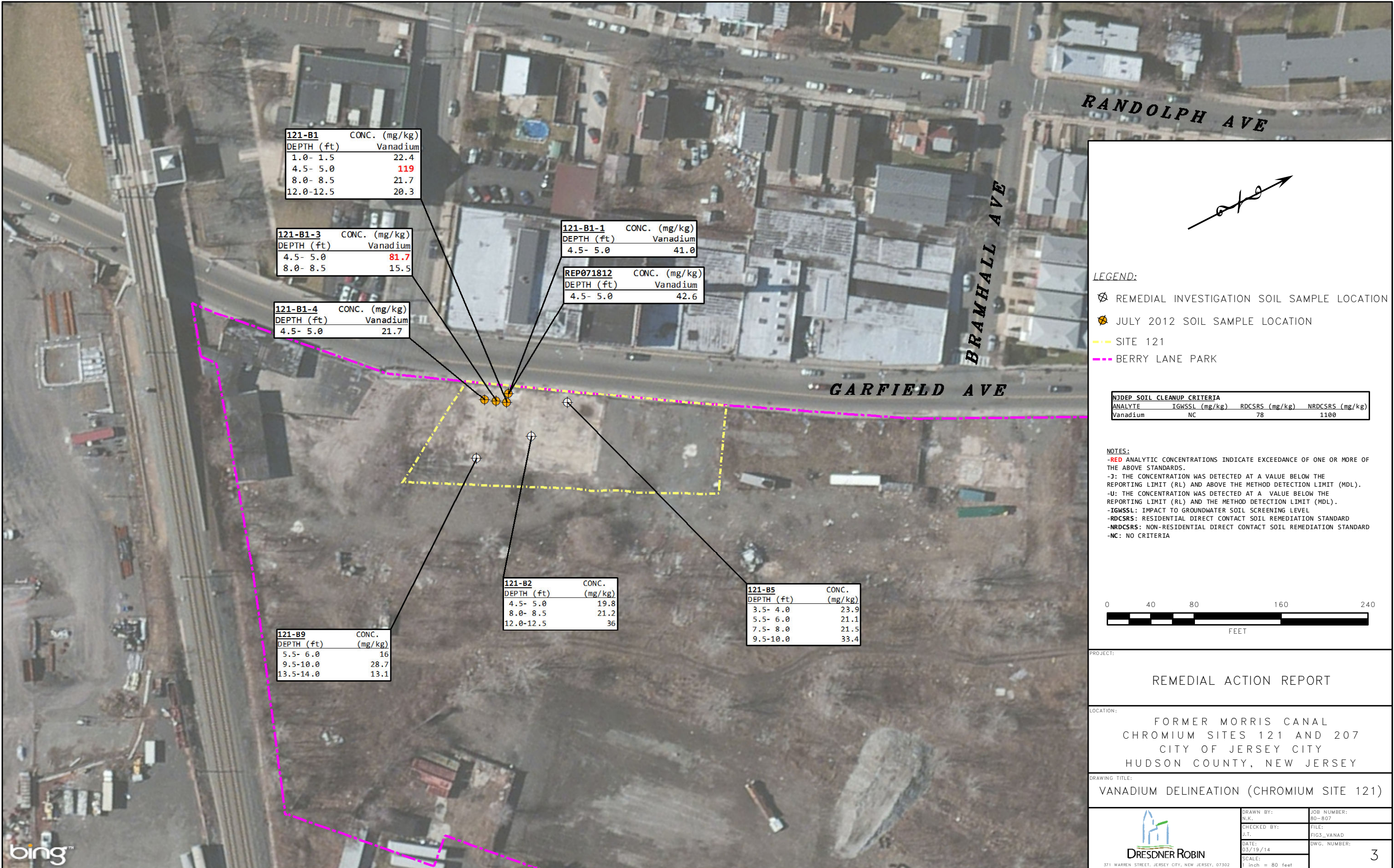


Q:\Env\Projects\00080_JCRA\B00080-64_Morris Canal\GIS\PAR\FIG3_VANAD.mxd



121-B1	CONC. (mg/kg)
DEPTH (ft)	Vanadium
1.0- 1.5	22.4
4.5- 5.0	119
8.0- 8.5	21.7
12.0-12.5	20.3

121-B1-3	CONC. (mg/kg)
DEPTH (ft)	Vanadium
4.5- 5.0	81.7
8.0- 8.5	15.5

121-B1-4	CONC. (mg/kg)
DEPTH (ft)	Vanadium
4.5- 5.0	21.7

121-B1-1	CONC. (mg/kg)
DEPTH (ft)	Vanadium
4.5- 5.0	41.0

REP071812	CONC. (mg/kg)
DEPTH (ft)	Vanadium
4.5- 5.0	42.6

121-B2	CONC. (mg/kg)
DEPTH (ft)	
4.5- 5.0	19.8
8.0- 8.5	21.2
12.0-12.5	36

121-B5	CONC. (mg/kg)
DEPTH (ft)	
3.5- 4.0	23.9
5.5- 6.0	21.1
7.5- 8.0	21.5
9.5-10.0	33.4

121-B9	CONC. (mg/kg)
DEPTH (ft)	
5.5- 6.0	16
9.5-10.0	28.7
13.5-14.0	13.1

RANDOLPH AVE

BRAMHALL AVE

GARFIELD AVE

LEGEND:
 ⊗ REMEDIAL INVESTIGATION SOIL SAMPLE LOCATION
 ⊙ JULY 2012 SOIL SAMPLE LOCATION
 - - - SITE 121
 - - - BERRY LANE PARK

NJDEP SOIL CLEANUP CRITERIA			
ANALYTE	IGWSSL (mg/kg)	RDCSRS (mg/kg)	NRDCSRS (mg/kg)
Vanadium	NC	78	1100

NOTES:
 -RED ANALYTIC CONCENTRATIONS INDICATE EXCEEDANCE OF ONE OR MORE OF THE ABOVE STANDARDS.
 -J: THE CONCENTRATION WAS DETECTED AT A VALUE BELOW THE REPORTING LIMIT (RL) AND ABOVE THE METHOD DETECTION LIMIT (MDL).
 -U: THE CONCENTRATION WAS DETECTED AT A VALUE BELOW THE REPORTING LIMIT (RL) AND THE METHOD DETECTION LIMIT (MDL).
 -IGWSSL: IMPACT TO GROUNDWATER SOIL SCREENING LEVEL
 -RDCSRS: RESIDENTIAL DIRECT CONTACT SOIL REMEDIATION STANDARD
 -NRDCSRS: NON-RESIDENTIAL DIRECT CONTACT SOIL REMEDIATION STANDARD
 -NC: NO CRITERIA



PROJECT:
 REMEDIAL ACTION REPORT

LOCATION:
 FORMER MORRIS CANAL
 CHROMIUM SITES 121 AND 207
 CITY OF JERSEY CITY
 HUDSON COUNTY, NEW JERSEY

DRAWING TITLE:
 VANADIUM DELINEATION (CHROMIUM SITE 121)

 571 WARREN STREET, JERSEY CITY, NEW JERSEY, 07302	DRAWN BY: N.K.	JOB NUMBER: 80-807
	CHECKED BY: J.T.	FILE: FIG3_VANAD
	DATE: 03/19/14	DWG. NUMBER: 3
	SCALE: 1 inch = 80 feet	

