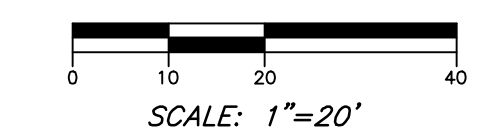


Remedial Action Report – Phase 3B South and Portions of Site 133 East and Halladay Street South (AOC P3B-1A, AOC 133E-1B, AOC HSS-1B, and AOC 137-1B) – Soil, Final  
Garfield Avenue Group  
PPG, Jersey City, New Jersey

## **Appendix K As-Built Diagrams**

E610450  
N:682800

E610950  
N:682500



**LEGEND**

- 100 — MAJOR CONTOUR LINE
- 101 — MINOR CONTOUR LINE
- x 100.0 SPOT ELEVATION
- △ CONTROL POINT
- CONCRETE
- ⊙ SANITARY SEWER MANHOLE
- SHEET PILE WALL
- PIPE
- UTILITY POLE
- X — CHAIN LINK FENCE

BSM-63  
IRON BAR WITH CAP  
N:682683.7  
E:610812.8  
ELEV:13.82'



VICINITY MAP  
NOT TO SCALE

**NOTES:**

1. THE HORIZONTAL DATUM IS THE NEW JERSEY STATE PLANE COORDINATE SYSTEM NAD83, DETERMINED BY DIFFERENTIAL GPS ON MARCH 27, 2012 USING THE NGS CORS SYSTEM, REFERENCE STATIONS: NUJ2, NUJ1, NYBP, NYBR, AND NYVH.
2. THE VERTICAL DATUM IS THE NORTH AMERICAN VERTICAL DATUM OF 1988 (NAVD88) GEOID09 VERIFIED BY DIFFERENTIAL GPS OBSERVATIONS FROM THE NGS CORS NETWORK ON MAY 10, 2012. BENCHMARK REFERENCE STATIONS: NUJ2, NANT, NYBP, NYBR AND NYVH. ON SITE CONTROL POINTS USED: BSM-933 (SPIKE AND TAG ALONG PACIFIC AVE, ELEV=9.38'), BSM-932 (IRON PIPE WITH CAP AT INTERSECTION OF PACIFIC AVE AND CARTERET AVE, ELEV=9.31'), BSM-21 (MAGNAIL SET IN CONCRETE SIDEWALK AT INTERSECTION OF CARTERET AVE AND GARFIELD AVE, ELEV=11.65'), BSM-23 (MAGNAIL SET IN ASPHALT AT INTERSECTION OF CARTERET AVE AND GARFIELD AVE, ELEV=11.82'), BSM-20 (MAGNAIL SET IN CONCRETE SIDEWALK ALONG GARFIELD AVE, ELEV=12.65'), AND BSM-934 (SPIKE AND TAG SET ALONG PACIFIC AVE, ELEV=9.34').
3. ALL COORDINATES AND ELEVATIONS SHOWN HEREON ARE IN U.S. SURVEY FEET.
4. THE UTILITIES SHOWN HAVE BEEN LOCATED FROM EVIDENCE OBSERVED ON THE SURFACE ONLY. THE SURVEYOR MAKES NO GUARANTEES THAT THE UTILITIES SHOWN COMPRISE ALL SUCH UTILITIES IN THE AREA, EITHER IN-SERVICE OR ABANDONED. THE SURVEYOR FURTHER DOES NOT WARRANT THAT THE UNDERGROUND UTILITIES SHOWN ARE IN THE EXACT LOCATION INDICATED. THE SURVEYOR HAS NOT PHYSICALLY LOCATED THE UNDERGROUND UTILITIES.
5. EXCAVATION OBSERVATIONS WERE MADE BY BORBAS SURVEYING AND MAPPING, LLC., IN THE FIELD AS WORK PROGRESSED FROM FEBRUARY 13, 2019 TO MAY 26, 2022.

**REFERENCE:**

1. "BOUNDARY AND TOPOGRAPHIC SURVEY, HALSTED CORPORATION BUILDING, LOT 12, BLOCK 21502, CITY OF JERSEY CITY, HUDSON COUNTY, N.J." PREPARED BY BORBAS SURVEYING & MAPPING, L.L.C., DATED AUGUST 30, 2016.

Garfield Avenue

Halladay Street  
(60' WIDE ROW)

MATCH LINE SHEET 1  
MATCH LINE SHEET 2

MATCH LINE SHEET 1  
MATCH LINE SHEET 2

**ASBULT EXCAVATION SURVEY**  
**10 WEST, 3B SOUTH, 133W/137B SITE EXCAVATIONS**  
**CITY OF JERSEY CITY, HUDSON COUNTY, N.J.**

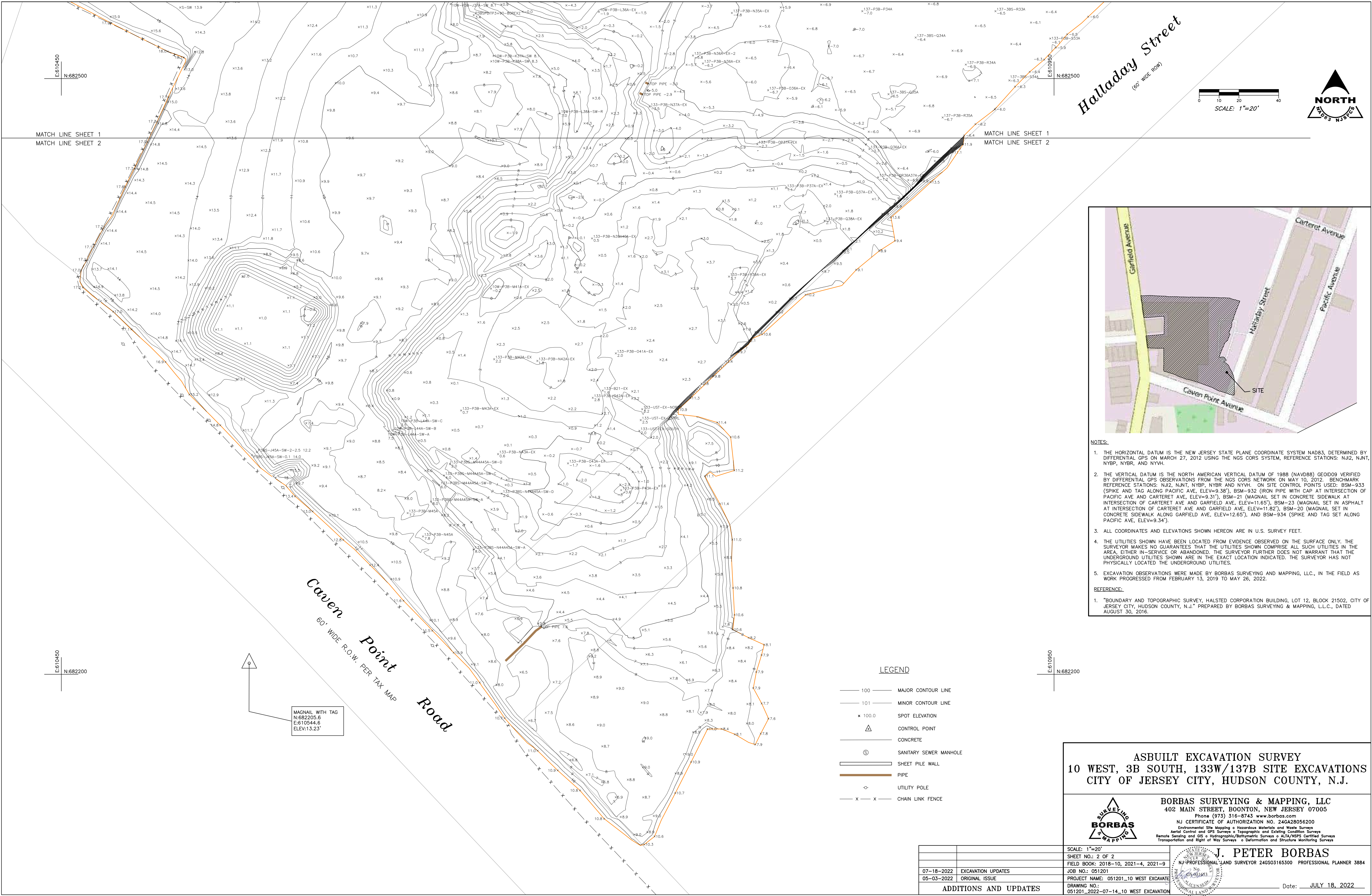


**BORBAS SURVEYING & MAPPING, LLC**  
 402 MAIN STREET, BOONTON, NEW JERSEY 07005  
 Phone (973) 316-8743 www.borbas.com  
 NJ CERTIFICATE OF AUTHORIZATION NO. 24GA28056200  
 Environmental Site Mapping • Hazardous Materials and Waste Surveys  
 Aerial Control and GPS Surveys • Topographic and Existing Condition Surveys  
 Remote Sensing and GIS • Hydrographic/Bathymetric Surveys • ALTA/NSPS Certified Surveys  
 Transportation and Right of Way Surveys • Deformation and Structure Monitoring Surveys

**J. PETER BORBAS**  
 N.J. PROFESSIONAL LAND SURVEYOR 24G050165300 PROFESSIONAL PLANNER 3884  
 Date: JULY 18, 2022

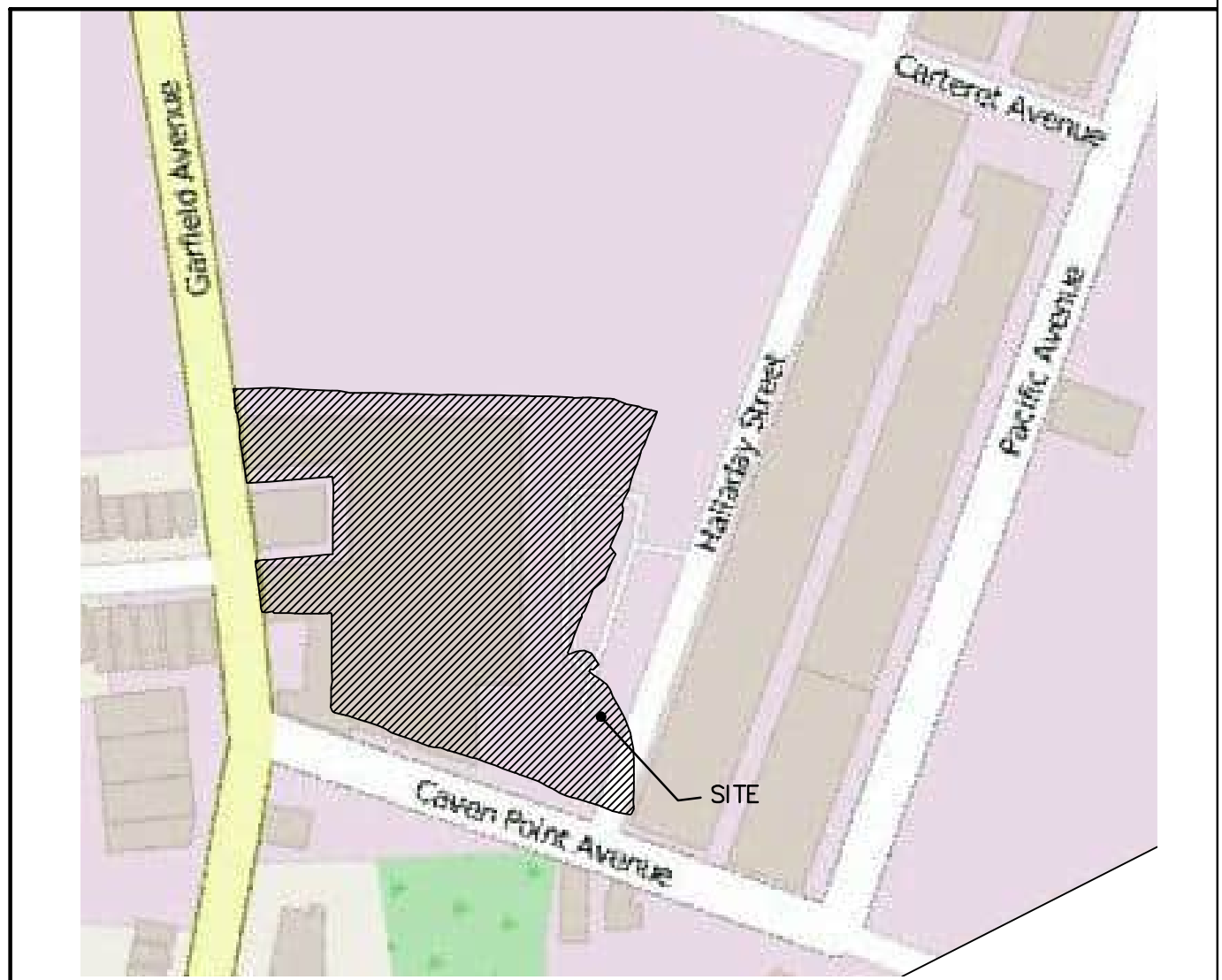
07-18-2022	EXCAVATION UPDATES
05-03-2022	ORIGINAL ISSUE
<b>ADDITIONS AND UPDATES</b>	

SCALE: 1"=20'
SHEET NO.: 1 OF 2
FIELD BOOK: 2018-10, 2021-4, 2021-9
JOB NO.: 051201
PROJECT NAME: 051201_10 WEST EXCAVATION
DRAWING NO.: 051201_2022-07-14_10 WEST EXCAVATION



Halladay Street  
(60' WIDE ROW)

SCALE: 1"=20'



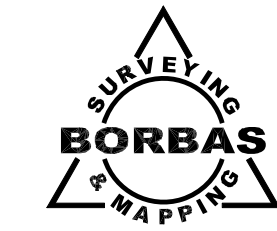
- NOTES:**
1. THE HORIZONTAL DATUM IS THE NEW JERSEY STATE PLANE COORDINATE SYSTEM NAD83, DETERMINED BY DIFFERENTIAL GPS ON MARCH 27, 2012 USING THE NGS CORS SYSTEM, REFERENCE STATIONS: NJ2, NJNT, NYBP, NYBR, AND NYVH.
  2. THE VERTICAL DATUM IS THE NORTH AMERICAN VERTICAL DATUM OF 1988 (NAVD88) GEIOD09 VERIFIED BY DIFFERENTIAL GPS OBSERVATIONS FROM THE NGS CORS NETWORK ON MAY 10, 2012. BENCHMARK REFERENCE STATIONS: NJ2, NJNT, NYBP, NYBR AND NYVH. ON SITE CONTROL POINTS USED: BSM-933 (SPIKE AND TAG ALONG PACIFIC AVE, ELEV=9.38'), BSM-932 (IRON PIPE WITH CAP AT INTERSECTION OF PACIFIC AVE AND CARTERET AVE, ELEV=9.31'), BSM-21 (MAGNAIL SET IN CONCRETE SIDEWALK AT INTERSECTION OF CARTERET AVE AND GARFIELD AVE, ELEV=11.65'), BSM-23 (MAGNAIL SET IN ASPHALT AT INTERSECTION OF CARTERET AVE AND GARFIELD AVE, ELEV=11.82'), BSM-20 (MAGNAIL SET IN CONCRETE SIDEWALK ALONG GARFIELD AVE, ELEV=12.65'), AND BSM-934 (SPIKE AND TAG SET ALONG PACIFIC AVE, ELEV=9.34').
  3. ALL COORDINATES AND ELEVATIONS SHOWN HEREON ARE IN U.S. SURVEY FEET.
  4. THE UTILITIES SHOWN HAVE BEEN LOCATED FROM EVIDENCE OBSERVED ON THE SURFACE ONLY. THE SURVEYOR MAKES NO GUARANTEES THAT THE UTILITIES SHOWN COMPRISE ALL SUCH UTILITIES IN THE AREA, EITHER IN-SERVICE OR ABANDONED. THE SURVEYOR FURTHER DOES NOT WARRANT THAT THE UNDERGROUND UTILITIES SHOWN ARE IN THE EXACT LOCATION INDICATED. THE SURVEYOR HAS NOT PHYSICALLY LOCATED THE UNDERGROUND UTILITIES.
  5. EXCAVATION OBSERVATIONS WERE MADE BY BORBAS SURVEYING AND MAPPING, LLC., IN THE FIELD AS WORK PROGRESSED FROM FEBRUARY 13, 2019 TO MAY 26, 2022.
- REFERENCE:**
1. "BOUNDARY AND TOPOGRAPHIC SURVEY, HALSTED CORPORATION BUILDING, LOT 12, BLOCK 21502, CITY OF JERSEY CITY, HUDSON COUNTY, N.J." PREPARED BY BORBAS SURVEYING & MAPPING, L.L.C., DATED AUGUST 30, 2016.

**LEGEND**

- 100 MAJOR CONTOUR LINE
- 101 MINOR CONTOUR LINE
- x SPOT ELEVATION
- △ CONTROL POINT
- CONCRETE
- ⊙ SANITARY SEWER MANHOLE
- SHEET PILE WALL
- PIPE
- ◇ UTILITY POLE
- x-x CHAIN LINK FENCE

MAGNAIL WITH TAG  
N:682205.6  
E:610544.6  
ELEV:13.23'

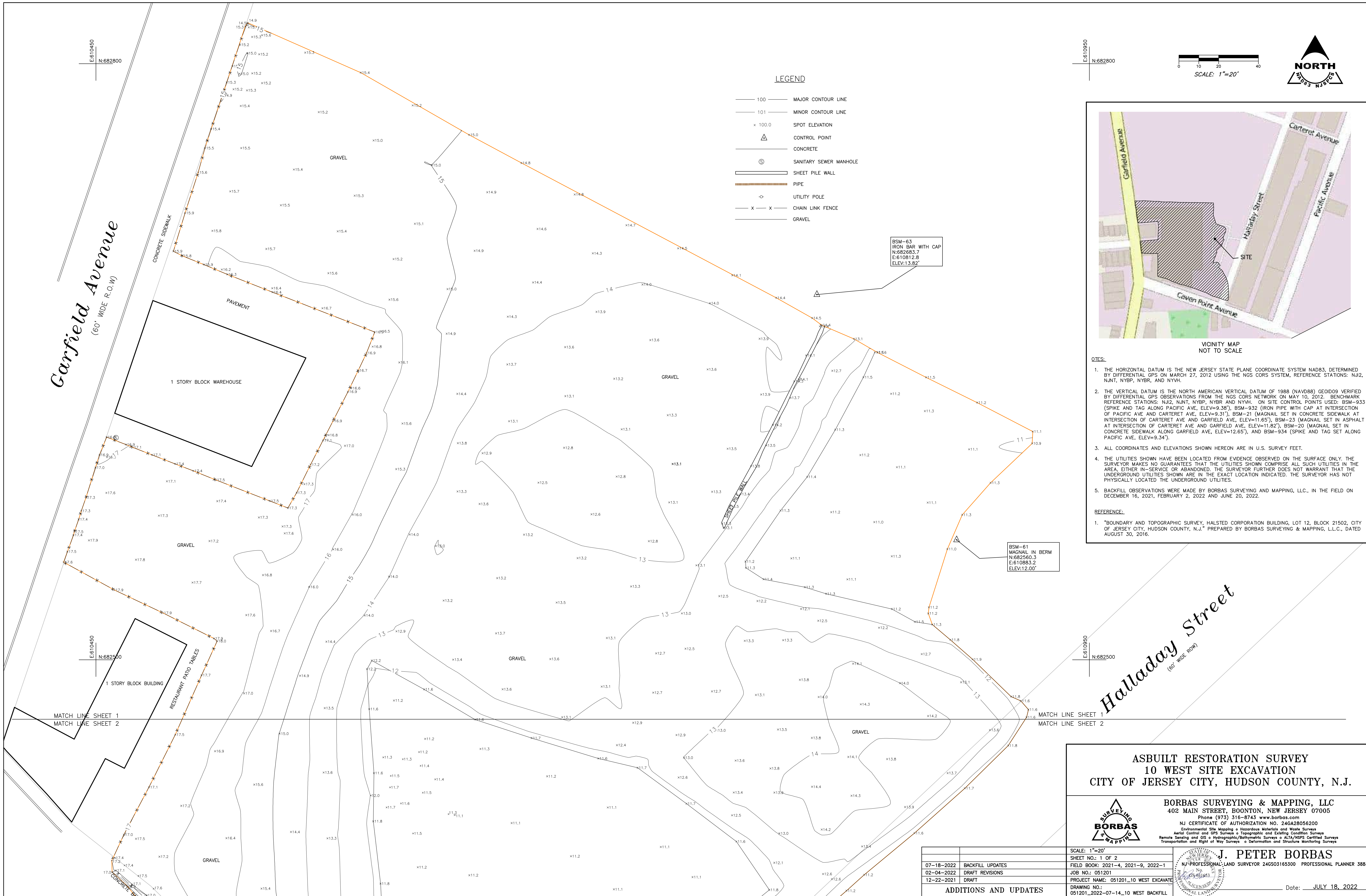
**ASBULT EXCAVATION SURVEY**  
**10 WEST, 3B SOUTH, 133W/137B SITE EXCAVATIONS**  
**CITY OF JERSEY CITY, HUDSON COUNTY, N.J.**



**BORBAS SURVEYING & MAPPING, LLC**  
402 MAIN STREET, BOONTON, NEW JERSEY 07005  
Phone (973) 316-8743 www.borbas.com  
NJ CERTIFICATE OF AUTHORIZATION NO. 246A28056200  
Environmental Site Mapping • Hazardous Materials and Waste Surveys  
Aerial Control and GPS Surveys • Topographic and Existing Condition Surveys  
Remote Sensing and GIS • Hydrographic/Bathymetric Surveys • ALTA/NPS Certified Surveys  
Transportation and Right of Way Surveys • Deformation and Structure Monitoring Surveys

**J. PETER BORBAS**  
NJ PROFESSIONAL LAND SURVEYOR 246S03165300 PROFESSIONAL PLANNER 3884

SCALE: 1"=20'	SHEET NO.: 2 OF 2
FIELD BOOK: 2018-10, 2021-4, 2021-9	JOB NO.: 051201
07-18-2022 EXCAVATION UPDATES	PROJECT NAME: 051201_10 WEST EXCAVATION
05-03-2022 ORIGINAL ISSUE	DRAWING NO.: 051201_2022-07-14-10 WEST EXCAVATION
<b>ADDITIONS AND UPDATES</b>	Date: JULY 18, 2022



**LEGEND**

- 100 — MAJOR CONTOUR LINE
- 101 — MINOR CONTOUR LINE
- x 100.0 SPOT ELEVATION
- △ CONTROL POINT
- CONCRETE
- ⊙ SANITARY SEWER MANHOLE
- SHEET PILE WALL
- PIPE
- UTILITY POLE
- X — CHAIN LINK FENCE
- GRAVEL

N:682800  
E:610450

SCALE: 1"=20'

**NORTH**



- NOTES:**
1. THE HORIZONTAL DATUM IS THE NEW JERSEY STATE PLANE COORDINATE SYSTEM NAD83, DETERMINED BY DIFFERENTIAL GPS ON MARCH 27, 2012 USING THE NGS CORS SYSTEM, REFERENCE STATIONS: NJ2, NJNT, NY2P, NY2R, AND NY2H.
  2. THE VERTICAL DATUM IS THE NORTH AMERICAN VERTICAL DATUM OF 1988 (NAVD88) GEOID09 VERIFIED BY DIFFERENTIAL GPS OBSERVATIONS FROM THE NGS CORS NETWORK ON MAY 10, 2012. BENCHMARK REFERENCE STATIONS: NJ2, NJNT, NY2P, NY2R AND NY2H. ON SITE CONTROL POINTS USED: BSM-933 (SPIKE AND TAG ALONG PACIFIC AVE, ELEV=9.38'), BSM-932 (IRON PIPE WITH CAP AT INTERSECTION OF PACIFIC AVE AND CARTERET AVE, ELEV=9.31'), BSM-21 (MAGNAIL SET IN CONCRETE SIDEWALK AT INTERSECTION OF CARTERET AVE AND GARFIELD AVE, ELEV=11.65'), BSM-23 (MAGNAIL SET IN ASPHALT AT INTERSECTION OF CARTERET AVE AND GARFIELD AVE, ELEV=11.82'), BSM-20 (MAGNAIL SET IN CONCRETE SIDEWALK ALONG GARFIELD AVE, ELEV=12.65'), AND BSM-934 (SPIKE AND TAG SET ALONG PACIFIC AVE, ELEV=9.34').
  3. ALL COORDINATES AND ELEVATIONS SHOWN HEREON ARE IN U.S. SURVEY FEET.
  4. THE UTILITIES SHOWN HAVE BEEN LOCATED FROM EVIDENCE OBSERVED ON THE SURFACE ONLY. THE SURVEYOR MAKES NO GUARANTEES THAT THE UTILITIES SHOWN COMPRISE ALL SUCH UTILITIES IN THE AREA, EITHER IN-SERVICE OR ABANDONED. THE SURVEYOR FURTHER DOES NOT WARRANT THAT THE UNDERGROUND UTILITIES SHOWN ARE IN THE EXACT LOCATION INDICATED. THE SURVEYOR HAS NOT PHYSICALLY LOCATED THE UNDERGROUND UTILITIES.
  5. BACKFILL OBSERVATIONS WERE MADE BY BORBAS SURVEYING AND MAPPING, LLC. IN THE FIELD ON DECEMBER 16, 2021, FEBRUARY 2, 2022 AND JUNE 20, 2022.
- REFERENCE:**
1. "BOUNDARY AND TOPOGRAPHIC SURVEY, HALSTED CORPORATION BUILDING, LOT 12, BLOCK 21502, CITY OF JERSEY CITY, HUDSON COUNTY, N.J." PREPARED BY BORBAS SURVEYING & MAPPING, L.L.C., DATED AUGUST 30, 2016.

BSM-63  
IRON BAR WITH CAP  
N:682683.7  
E:610812.8  
ELEV:13.82'

BSM-61  
MAGNAIL IN BERM  
N:682560.3  
E:610883.2  
ELEV:12.00'

Halladay Street  
(60' WIDE ROW)

**ASBUILT RESTORATION SURVEY  
10 WEST SITE EXCAVATION  
CITY OF JERSEY CITY, HUDSON COUNTY, N.J.**

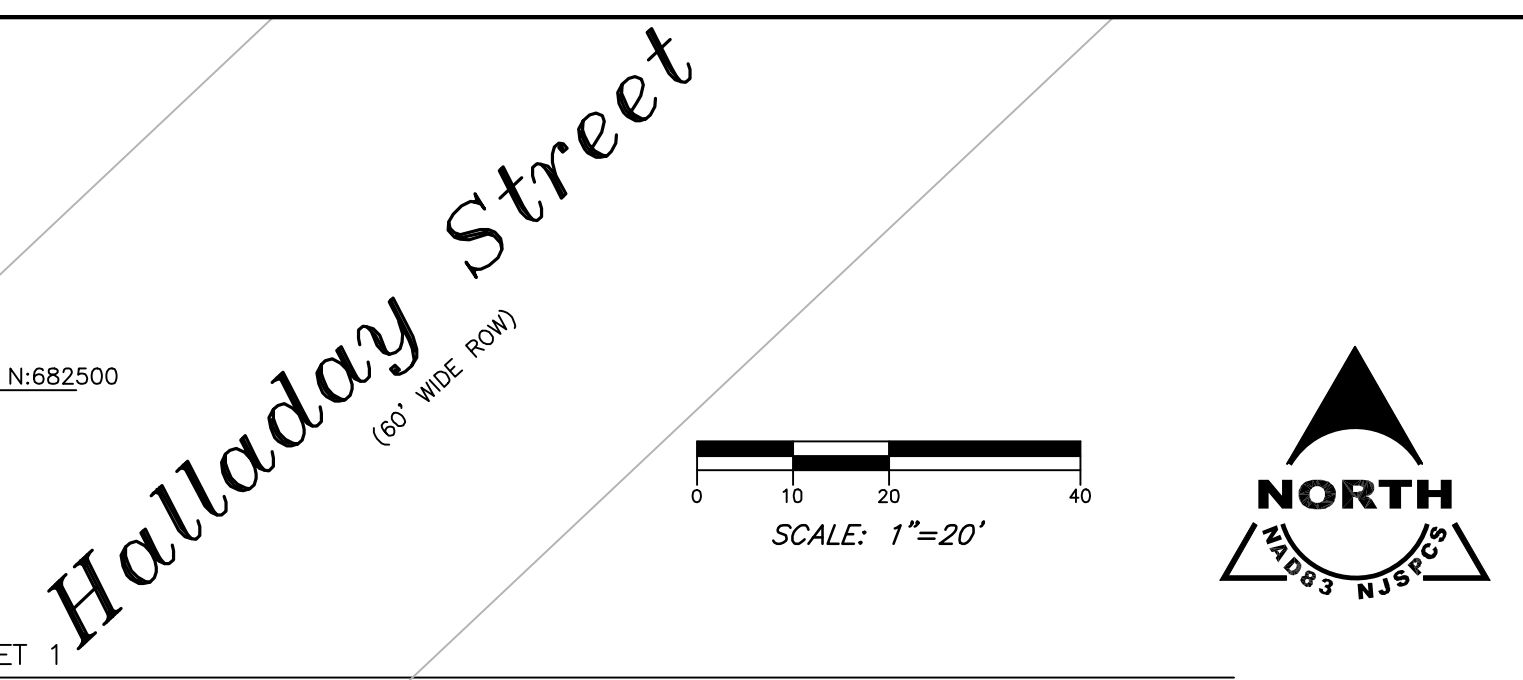
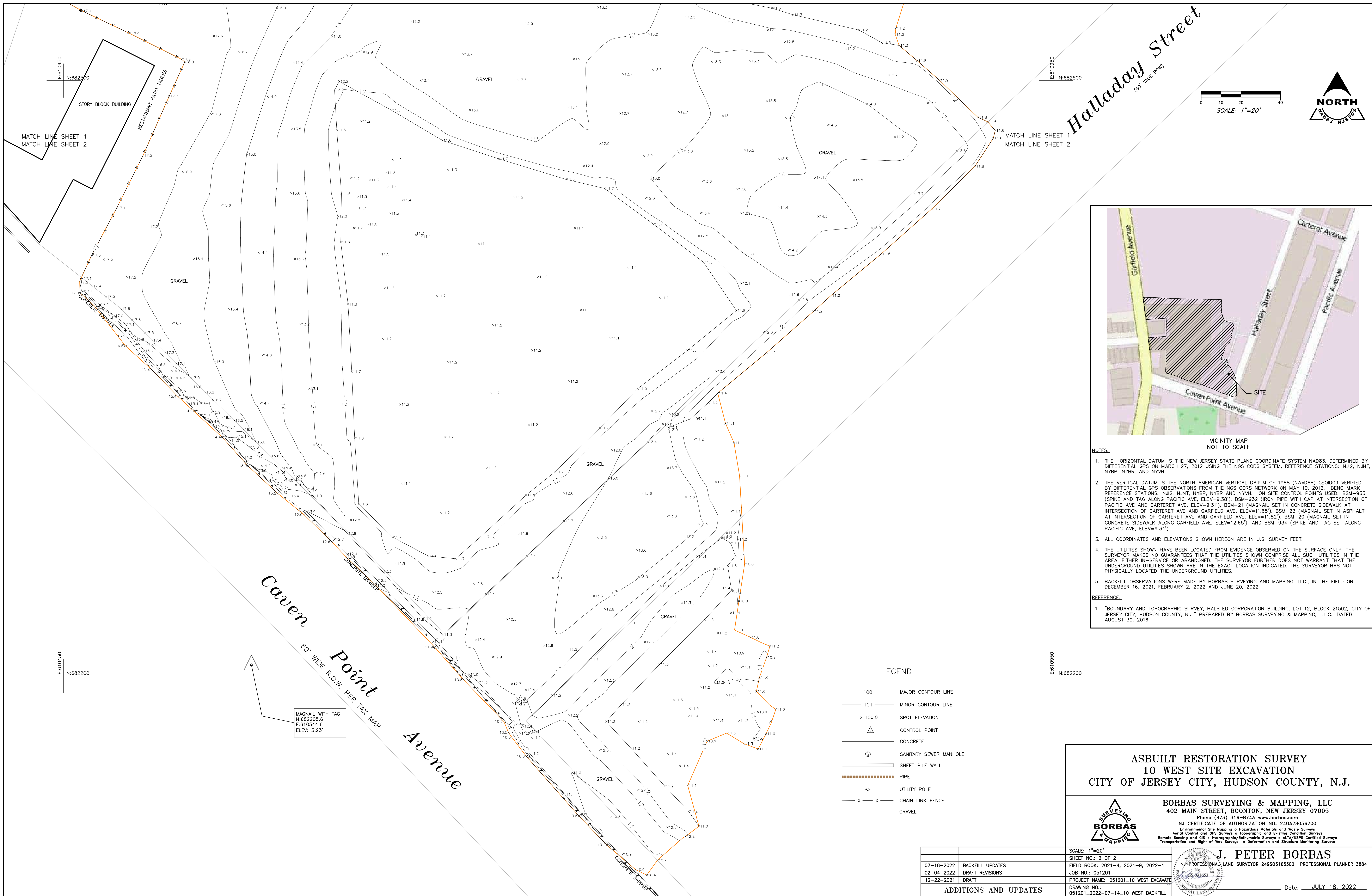
**BORBAS SURVEYING & MAPPING, LLC**  
402 MAIN STREET, BOONTON, NEW JERSEY 07005  
Phone (973) 316-8743 www.borbas.com  
NJ CERTIFICATE OF AUTHORIZATION NO. 246A28056200  
Environmental Site Mapping • Hazardous Materials and Waste Surveys  
Aerial Control and GPS Surveys • Topographic and Existing Condition Surveys  
Remote Sensing and GIS • Hydrographic/Bathymetric Surveys • ALTA/NSPS Certified Surveys  
Transportation and Signal of Way Surveys • Deformation and Structure Monitoring Surveys

**J. PETER BORBAS**  
NJ PROFESSIONAL LAND SURVEYOR 246503165300 PROFESSIONAL PLANNER 3884

07-18-2022	BACKFILL UPDATES
02-04-2022	DRAFT REVISIONS
12-22-2021	DRAFT
<b>ADDITIONS AND UPDATES</b>	

SCALE: 1"=20'
SHEET NO.: 1 OF 2
FIELD BOOK: 2021-4, 2021-9, 2022-1
JOB NO.: 051201
PROJECT NAME: 051201_10 WEST EXCAVATE
DRAWING NO.: 051201_2022-07-14_10 WEST BACKFILL

Date: JULY 18, 2022



VICINITY MAP  
NOT TO SCALE

- NOTES:**
1. THE HORIZONTAL DATUM IS THE NEW JERSEY STATE PLANE COORDINATE SYSTEM NAD83, DETERMINED BY DIFFERENTIAL GPS ON MARCH 27, 2012 USING THE NGS CORS SYSTEM, REFERENCE STATIONS: NJ2, NJNT, NYBP, NYBR, AND NYVH.
  2. THE VERTICAL DATUM IS THE NORTH AMERICAN VERTICAL DATUM OF 1988 (NAVD88) GEOID09 VERIFIED BY DIFFERENTIAL GPS OBSERVATIONS FROM THE NGS CORS NETWORK ON MAY 10, 2012. BENCHMARK REFERENCE STATIONS: NJ2, NJNT, NYBP, NYBR AND NYVH. ON SITE CONTROL POINTS USED: BSM-933 (SPIKE AND TAG ALONG PACIFIC AVE, ELEV=9.38'), BSM-932 (IRON PIPE WITH CAP AT INTERSECTION OF PACIFIC AVE AND CARTERET AVE, ELEV=9.31'), BSM-21 (MAGNAIL SET IN CONCRETE SIDEWALK AT INTERSECTION OF CARTERET AVE AND GARFIELD AVE, ELEV=11.65'), BSM-23 (MAGNAIL SET IN ASPHALT AT INTERSECTION OF CARTERET AVE AND GARFIELD AVE, ELEV=11.82'), BSM-20 (MAGNAIL SET IN CONCRETE SIDEWALK ALONG GARFIELD AVE, ELEV=12.65'), AND BSM-934 (SPIKE AND TAG SET ALONG PACIFIC AVE, ELEV=9.34').
  3. ALL COORDINATES AND ELEVATIONS SHOWN HEREON ARE IN U.S. SURVEY FEET.
  4. THE UTILITIES SHOWN HAVE BEEN LOCATED FROM EVIDENCE OBSERVED ON THE SURFACE ONLY. THE SURVEYOR MAKES NO GUARANTEES THAT THE UTILITIES SHOWN COMPRISE ALL SUCH UTILITIES IN THE AREA, EITHER IN-SERVICE OR ABANDONED. THE SURVEYOR FURTHER DOES NOT WARRANT THAT THE UNDERGROUND UTILITIES SHOWN ARE IN THE EXACT LOCATION INDICATED. THE SURVEYOR HAS NOT PHYSICALLY LOCATED THE UNDERGROUND UTILITIES.
  5. BACKFILL OBSERVATIONS WERE MADE BY BORBAS SURVEYING AND MAPPING, L.L.C., IN THE FIELD ON DECEMBER 16, 2021, FEBRUARY 2, 2022 AND JUNE 20, 2022.
- REFERENCE:**
1. "BOUNDARY AND TOPOGRAPHIC SURVEY, HALSTED CORPORATION BUILDING, LOT 12, BLOCK 21502, CITY OF JERSEY CITY, HUDSON COUNTY, N.J." PREPARED BY BORBAS SURVEYING & MAPPING, L.L.C., DATED AUGUST 30, 2016.

**LEGEND**

- 100 MAJOR CONTOUR LINE
- 101 MINOR CONTOUR LINE
- x 100.0 SPOT ELEVATION
- △ CONTROL POINT
- CONCRETE
- ⊙ SANITARY SEWER MANHOLE
- SHEET PILE WALL
- PIPE
- ◇ UTILITY POLE
- x - CHAIN LINK FENCE
- GRAVEL

MAGNAIL WITH TAG  
N:682205.6  
E:610544.6  
ELEV:13.23'

**ASBUILT RESTORATION SURVEY  
10 WEST SITE EXCAVATION  
CITY OF JERSEY CITY, HUDSON COUNTY, N.J.**

**BORBAS SURVEYING & MAPPING, LLC**  
402 MAIN STREET, BOONTON, NEW JERSEY 07005  
Phone (973) 316-8743 www.borbas.com  
NJ CERTIFICATE OF AUTHORIZATION NO. 24GA28056200  
Environmental Site Mapping • Hazardous Materials and Waste Surveys  
Aerial Control and GPS Surveys • Topographic and Existing Condition Surveys  
Remote Sensing and GIS • Hydrographic/Bathymetric Surveys • ALTA/NSPS Certified Surveys  
Transportation and Right of Way Surveys • Deformation and Structure Monitoring Surveys

**J. PETER BORBAS**  
NJ PROFESSIONAL LAND SURVEYOR 240503165300 PROFESSIONAL PLANNER 3884

07-18-2022	BACKFILL UPDATES
02-04-2022	DRAFT REVISIONS
12-22-2021	DRAFT

SCALE: 1"=20'  
SHEET NO.: 2 OF 2  
FIELD BOOK: 2021-4, 2021-9, 2022-1  
JOB NO.: 051201  
PROJECT NAME: 051201\_10 WEST EXCAVATE  
DRAWING NO.: 051201\_2022-07-14\_10 WEST BACKFILL

Date: JULY 18, 2022

ADDITIONS AND UPDATES