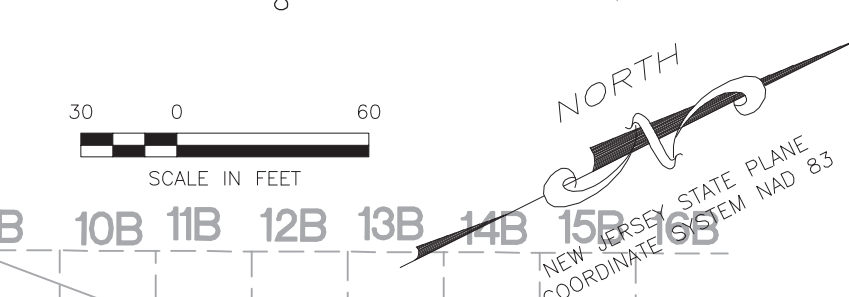


LEGEND

(Solid line)	EXCAVATION CONTOUR 5 FT.
(Dashed line)	EXCAVATION CONTOUR 1 FT.
(Dotted line)	EXCAVATION SHORING
(Dashed-dotted line)	EXISTING EXCAVATION SHORING
(Cross-hatch pattern)	MODUTANK SECONDARY CONTAINMENT
(Diagonal hatch pattern)	MODUTANK BRACING
(Light gray fill)	POTENTIAL EXCAVATION TO -19 NAVD88 (35 FEET BGS)
(Dark gray fill)	CLEAN CORRIDOR EXCAVATION



NOTE:
 1. FINAL VERTICAL EXCAVATION LIMITS WILL BE BASED ON VISUAL OBSERVATIONS AND FIELD CONFIRMATION SAMPLING.
 2. IN AREAS WHERE MEADOW MAT IS NOT BE PRESENT, EXCAVATION MAY EXTEND TO A MAXIMUM DEPTH OF 35 FEET BELOW GROUND SURFACE.

NOT FOR CONSTRUCTION

NO DRW/DATE	REVISION	CHKD/DATE	APPVD/DATE
A	NO DRW/DATE	NO DRW/DATE	NO DRW/DATE
B	R.M.T. 12/05/11	N.J. DEP COMMENT EDITS	C.W.M. 12/05/11
A	RCW 05/16/11	RAWP	H.N.Q. 12/06/11

AECOM
 20 Kingbridge Road, Suite 200
 Piscataway, NJ 08854
 www.aecom.com

PPG INDUSTRIES
 GARFIELD AVENUE SITES
 JERSEY CITY, HUDSON COUNTY, NEW JERSEY

PROJ. NO.: 60190341.500A DATE: 05/16/11

**CONCEPTUAL
 PHASE 1 EXCAVATION PLAN**

REMEDIAL ACTION
 WORK PLAN

DRAWING NUMBER:
6-5

SHEET NUMBER:
 1 of 1

REVISION **B**

File: A:\Rem_Eng\Project Files\PPG_Industries\Garfield Avenue\2008 Design CD\DWG\PPG - 2008 Design C-01\Long Layout_P01_Exc Plan User.warner_Plotfiled Nov 19, 2014 - 3:05pm .wpl's