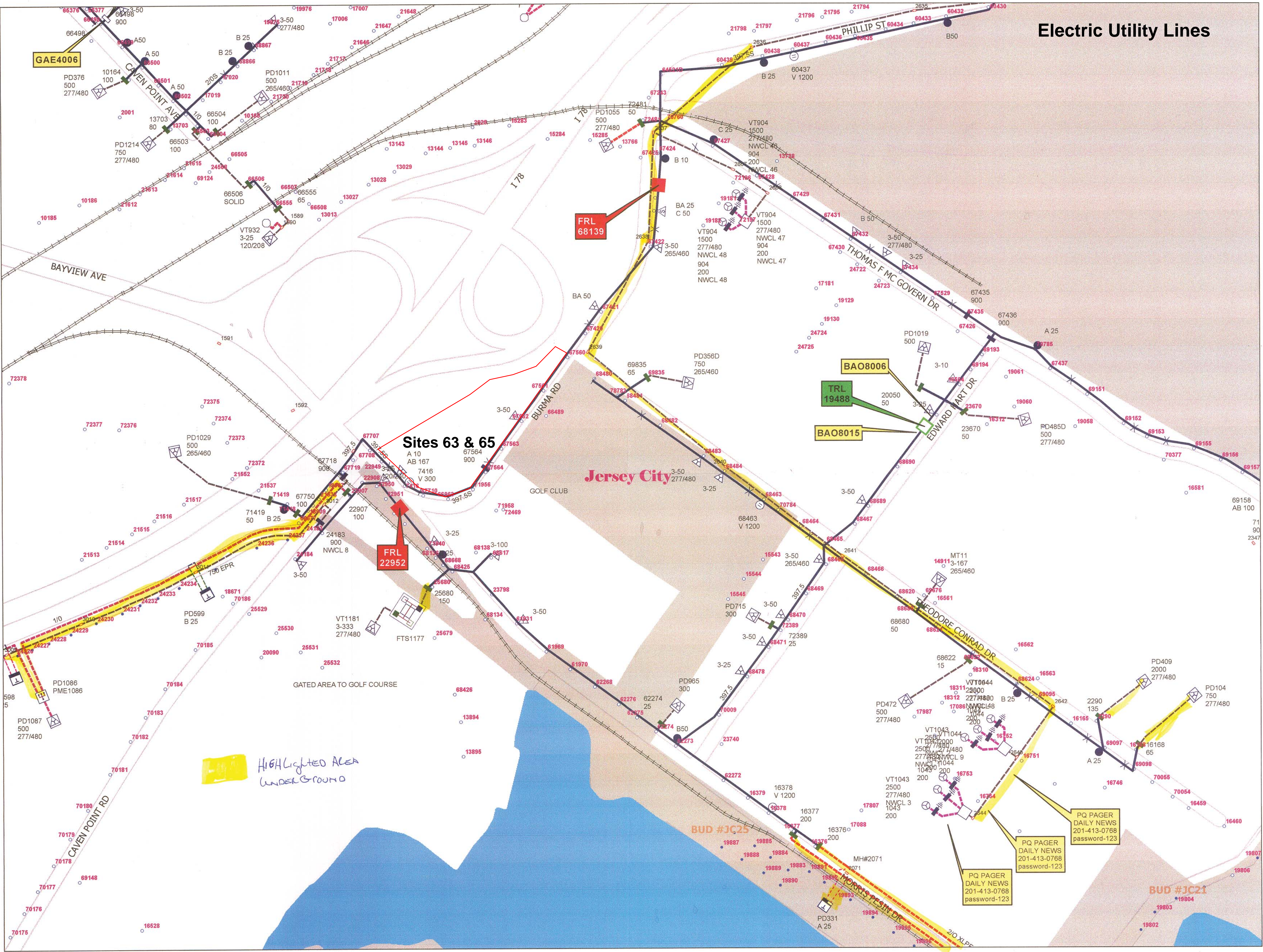


## **APPENDIX K UTILITY INFORMATION**

# Electric Utility Lines



Sites 63 & 65

Jersey City

HIGHLIGHTED AREA UNDERGROUND

PQ PAGER DAILY NEWS 201-413-0768 password-123

PQ PAGER DAILY NEWS 201-413-0768 password-123

PQ PAGER DAILY NEWS 201-413-0768 password-123

BUD #JC21

BUD #JC25

Sites 063/065  
Gas



July 21, 2010

AECOM  
30 Knightsbridge Road, Suite 520  
Piscataway, New Jersey 08854

Attention: Holy Kokinelis

**RE: Burma Road**  
**City of Jersey City, Hudson County, New Jersey**

Dear Ms. Kokinelis:

As per your request, enclosed are as built sketches for the above referenced project, which identify the gas facilities in that area. Please note site information supplied by PSE&G is for design purposes only, actual locations must be verified in the field.

Also, please note and highlight for our future review, any possible conflicts with the existing gas facilities. Please forward all copies of your final plans when available, and notify us of any preconstruction meetings. During the review of your project needs, all efforts should be made to avoid conflict with the existing gas facilities. Should there be a need for PSE&G to relocate the gas facilities to accommodate construction, all costs associated with the relocation needs will be billed to the responsible party.

PSE&G's gas facilities within the project scope must be protected at all costs. Any gas main that falls within the "angle of repose" must be protected. I have included a document that defines the angle of repose. All methods of protection for the gas facilities are to be designed by a Licensed Professional Engineer and reviewed by PSE&G prior to excavation. Also, if there is a change in grade, the existing gas facilities must have a minimum of 2' cover.

Additionally, it is the responsibility of the requesting party to address the need for test pits to accurately identify the location of underground facilities. Performing test pit procedures is not part of the work done by PSE&G. PSE&G will not accept responsibility for conflicted underground facilities due to the failure of the Engineering Firm to conduct these tests to eliminate conflict.

Prior to any excavation, please call the New Jersey One Call Center Damage Prevention System at 1-800-272-1000.

Very truly yours,

A handwritten signature in black ink, appearing to read "James Cavanagh", written over a horizontal line.

James Cavanagh  
Distribution Supervisor  
Central Gas Division

ROAD

EXIST 12" STEEL I.P.

BURMA

Joint Sections

1	13'
2	45'-6"
3	45'-1"
4	41'-6"
5	45'-5"
6	45'-3"
7	45'-5"
8	44'-7"

Joint Section

9	44'-8"
10	43'-3"
11	44'-6"
12	44'-4"
13	43'-8"
14	45'-8"
15	5'-2"

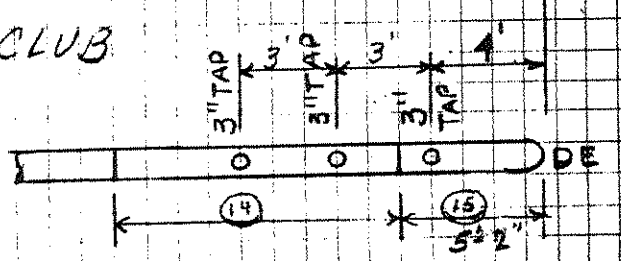
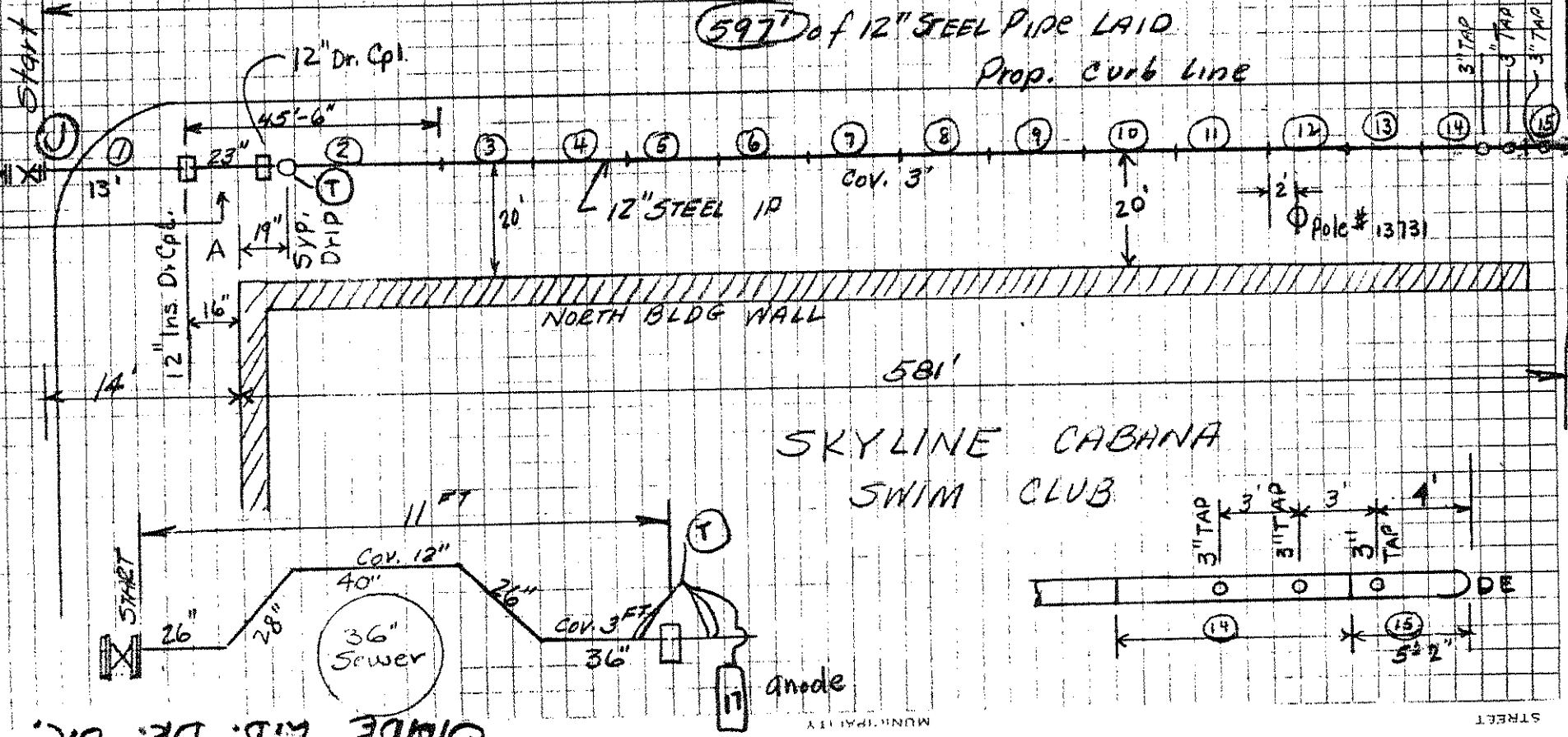
4-23-63  
J.W. McLaren

(STATUE OF LIBERTY DRIVE)

NOW THEO. CONRAD DR 1-21-85

595' - Length of Excavation  
597' of 12" STEEL PIPE LAID

Prop. curb line

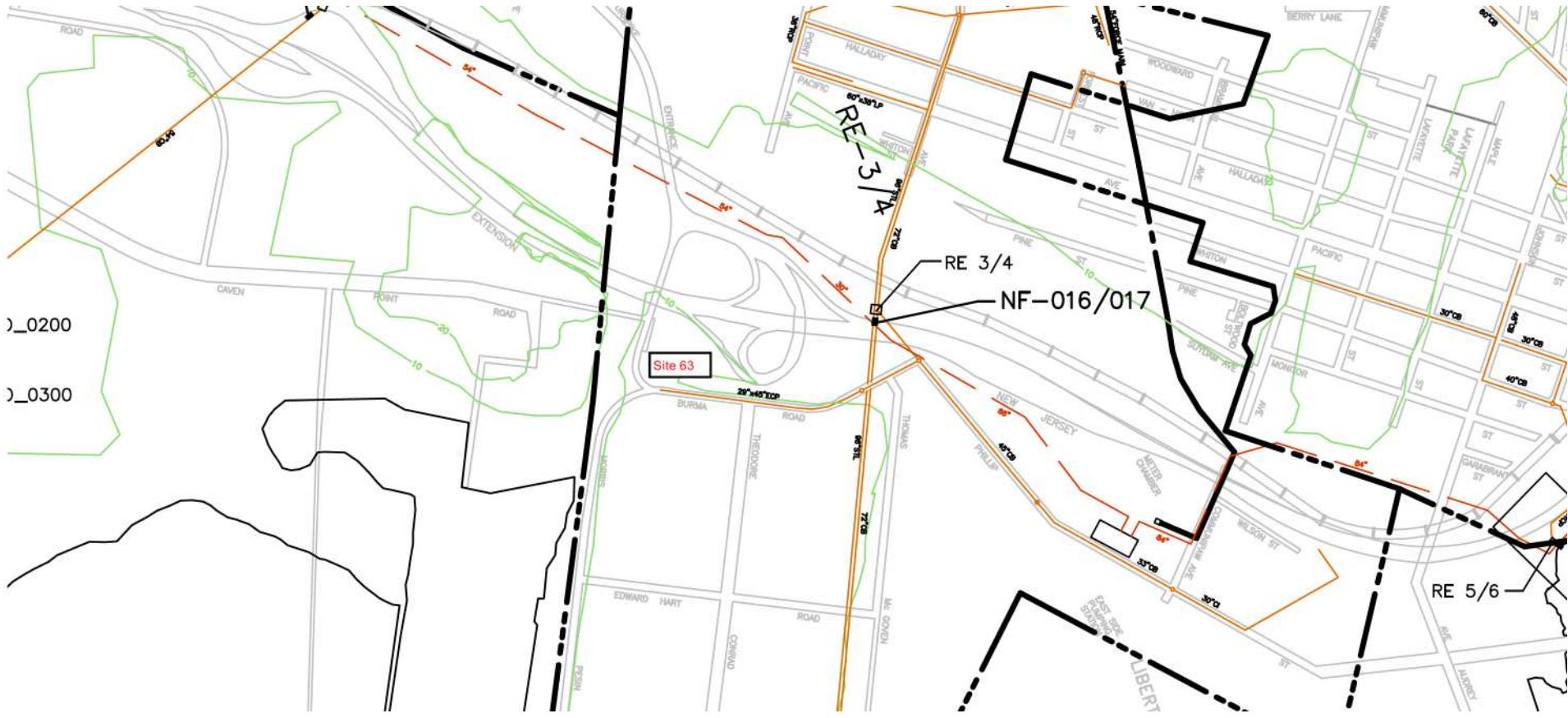


OLIVE W.B. DR. D.C.

MUNICIPALITY

STREET

SKETCH OF MAIN INSTALLED OR RETIRED  
5/11/11



0\_0200

0\_0300

# THE JERSEY CITY MUNICIPAL UTILITIES AUTHORITY

555 ROUTE #440  
JERSEY CITY, NEW JERSEY 07305  
(201) 432-1150/51  
FAX (201) 432-1576

## FACSIMILE COVER SHEET

DATE: 2 / 17 / 13

TO: Bill

FROM: Rich 201-209-0319 Engineering

FAX NO. CALLED: (412) 921-4040

PAGES TRANSMITTED (INCLUDING COVER SHEET) 5

According to  
Combined sewers  
along Busma Road ->  
discharge to POTW  
  
Some separate/some  
combined along Linden  
Ave East - road drains  
from SR 185 to river

### COMMENTS:

As a follow-up to our telephone conversation enclosed please find  
copies of JCMUA's water and sewer maps representing the areas you were  
inquiring about. Please be advised this represents the best available info  
regarding our utilities in the area. A field survey must be performed to  
verify the info.

### CONFIDENTIALITY NOTICE

The information contained in this facsimile message is legally privileged and confidential information intended only for the use of the individual or entity named above. If the reader of the message is not the intended recipient, you are hereby notified that any dissemination, distribution or copy of this telecopy is strictly prohibited. If you have received this telecopy in error, please notify us immediately by telephone so that we can arrange to return the original document to us at no cost to you. Thank you.

If you do not receive all the pages indicated, please call (201) 432-1150 immediately.

- Original will be sent by regular mail.
- Original will be sent by overnight delivery.
- No original will be sent.

