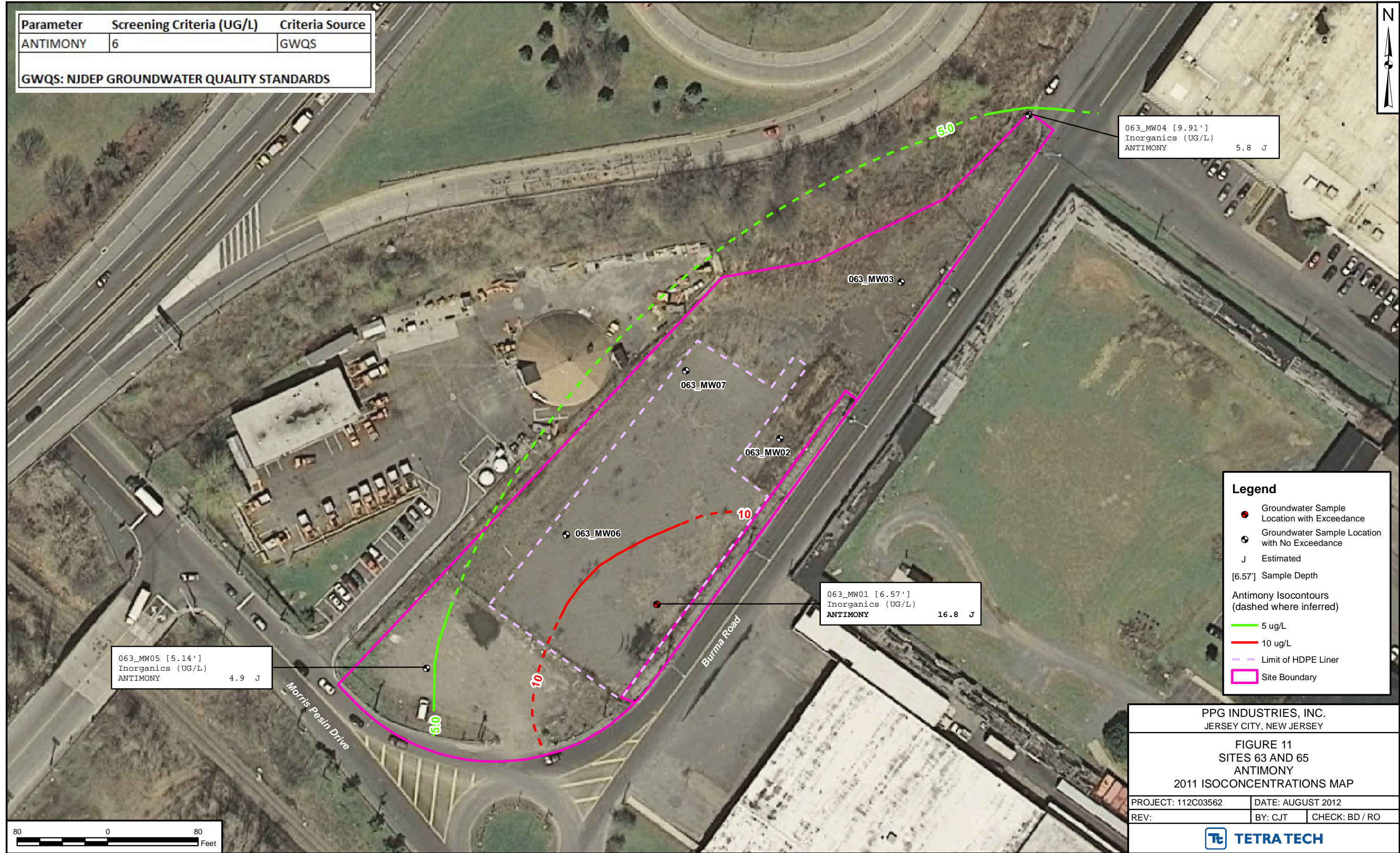


Parameter	Screening Criteria (UG/L)	Criteria Source
ANTIMONY	6	GWQS

GWQS: NJDEP GROUNDWATER QUALITY STANDARDS



063_MW05 [5.14']
Inorganics (UG/L)
ANTIMONY 4.9 J

063_MW01 [6.57']
Inorganics (UG/L)
ANTIMONY 16.8 J

063_MW04 [9.91']
Inorganics (UG/L)
ANTIMONY 5.8 J

Legend

- Groundwater Sample Location with Exceedance
- Groundwater Sample Location with No Exceedance
- J Estimated
- [6.57'] Sample Depth
- Antimony Isoconcentrations (dashed where inferred)
- 5 ug/L
- 10 ug/L
- Limit of HDPE Liner
- Site Boundary

PPG INDUSTRIES, INC.
JERSEY CITY, NEW JERSEY

FIGURE 11
SITES 63 AND 65
ANTIMONY
2011 ISOCONCENTRATIONS MAP

PROJECT: 112C03562	DATE: AUGUST 2012
REV:	BY: CJT CHECK: BD / RO

TETRA TECH

