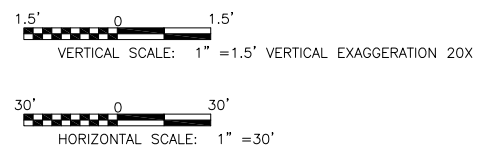
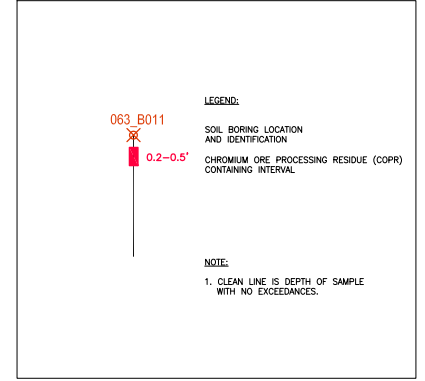
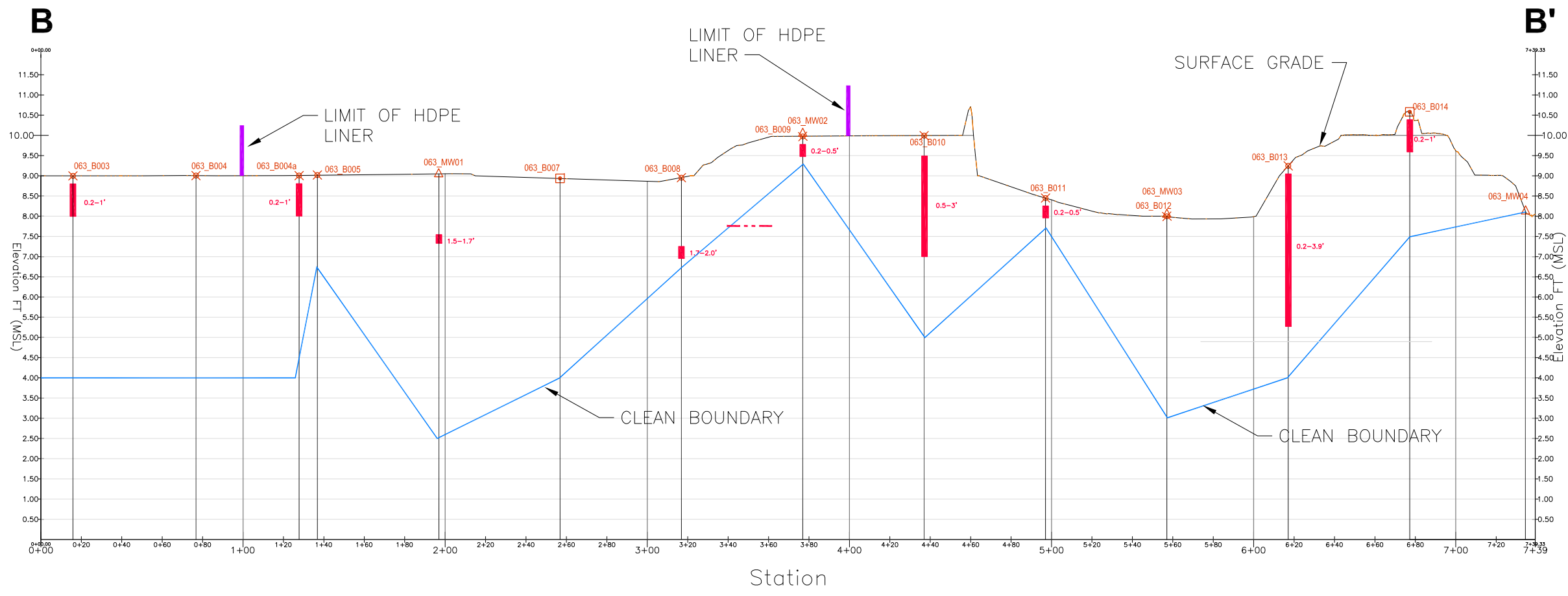
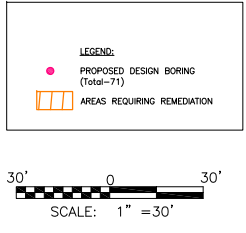
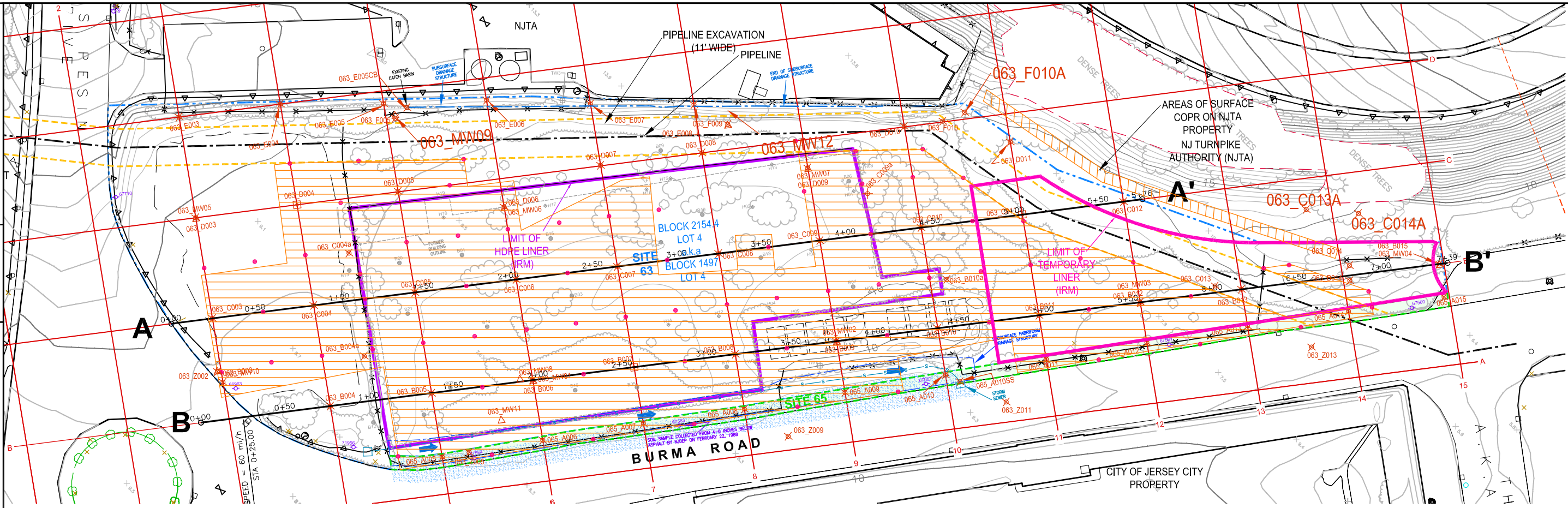


OFFICE DRAWING NUMBER
146429-D4-3
Trenton, NJ



| | | | |
|--------------|------|---|-------------|
| | | Shaw Environmental, Inc. (A CB&I Company) 200 Horizon Center Blvd. Trenton, NJ 08691-1904 | |
| DESIGNED BY: | -- | PPG INDUSTRIES HUDSON COUNTY, NEW JERSEY | |
| DRAWN BY: | A.Y. | FIGURE 4 AREAS REQUIRING REMEDIATION-SOILS CROSS-SECTION B-B' SITES 063 AND 065 JERSEY CITY, NEW JERSEY | |
| CHECKED BY: | W.M. | | |
| APPROVED BY: | W.M. | DATE: | 2/7/13 |
| | | SCALE: | AS SHOWN |
| | | DRAWING NO.: | 146429-D4-3 |
| | | REV. NO.: | - |

SHEET TITLE: 146429-D4-3 - Areas Requiring Remediation-Soils Cross-Section B-B'
 DRAWN BY: A.Y.
 CHECKED BY: W.M.
 DATE: 2/7/13