




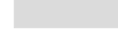



LEGEND

-  PROPERTY LINE
-  EDGE OF CONCRETE
-  EXISTING SHEET PILE
-  CURB
-  EXISTING BUILDING
-  AOC CAR-1A - CCPW-IMPACTED SOIL IN CARTERET AVENUE
-  SITE BOUNDARY

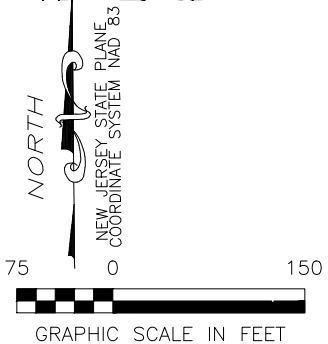
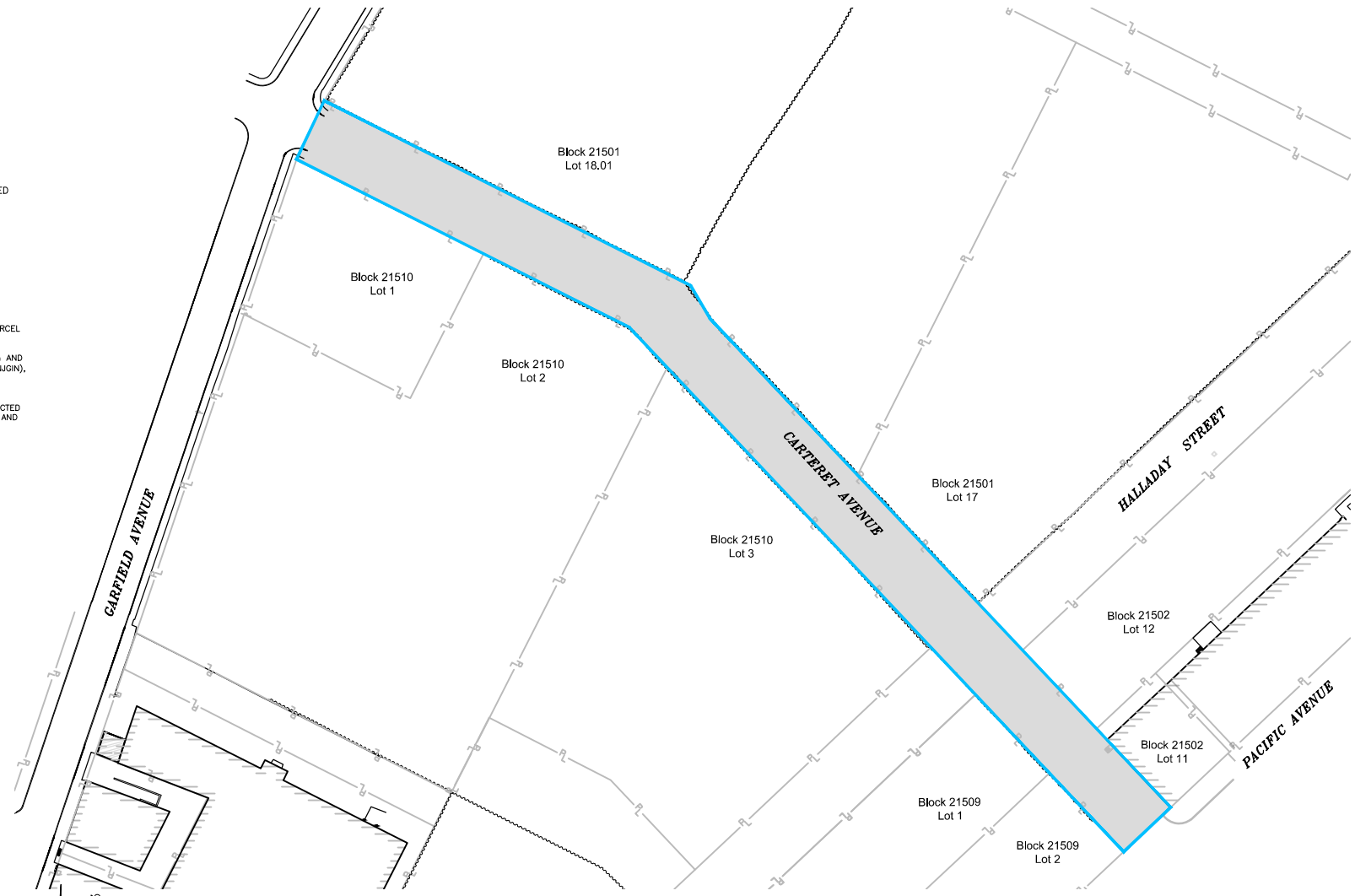
NOTES:

AOC - AREA OF CONCERN

CCPW - CHROMATE CHEMICAL PRODUCTION WASTE

1. SOURCES OF BLOCK/LOT INFORMATION ARE JERSEY CITY PARCEL DATA FROM TAX MAP VIEWER LAST ACCESSED MARCH 2021 AVAILABLE AT: <http://hostedfiles.civilsolutions.biz/jerseycity/taxmaps/index.htm> AND FROM THE NEW JERSEY GEOGRAPHIC INFORMATION NETWORK (NJGIN), LASTED ACCESSED MARCH 2021 AVAILABLE AT: https://njgin.state.nj.us/GGIS_IW

2. THE PROPERTY LINES ARE SOURCED FROM SURVEYS CONDUCTED FROM NOVEMBER 2006 TO JULY 2014 BY BORBAS SURVEYING AND MAPPING, LLC.



PPG
GARFIELD AVENUE GROUP
JERSEY CITY, NEW JERSEY

**SITE MAP
CARTERET AVENUE**

DATE: 07/07/2021

DRWN: SAP

FIGURE 1-2