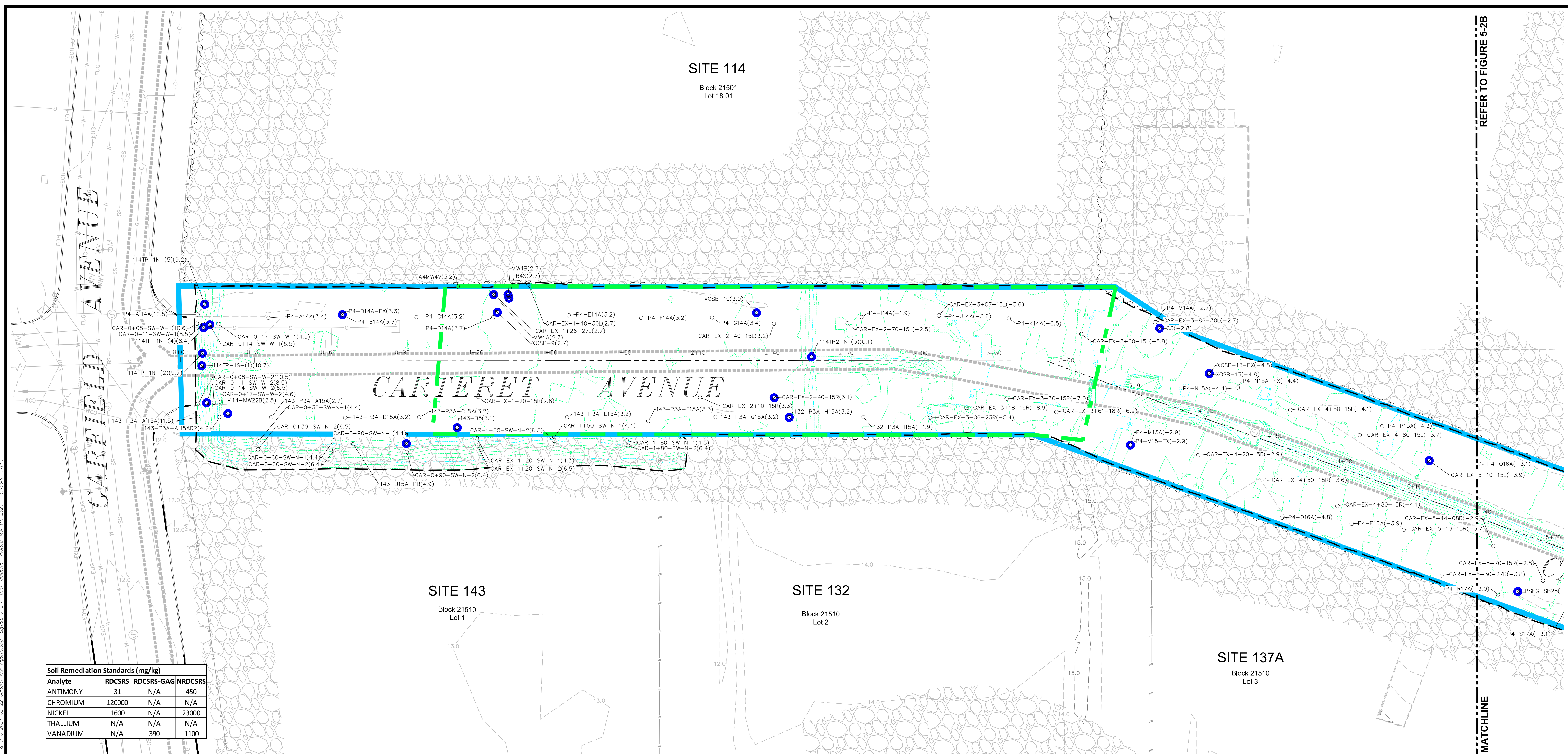


SITE 114

Block 21501
Lot 18.01

REFER TO FIGURE 5-2B



Soil Remediation Standards (mg/kg)

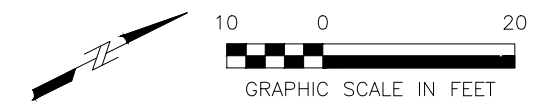
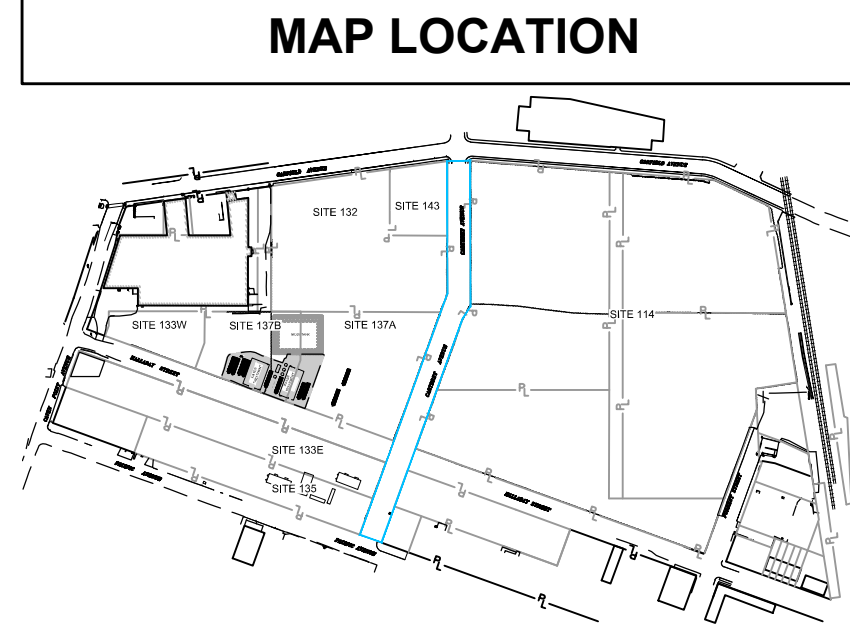
Analyte	RDCSRS	RDCSRS-GAG	NRDCSRS
ANTIMONY	31	N/A	450
CHROMIUM	120000	N/A	N/A
NICKEL	1600	N/A	23000
THALLIUM	N/A	N/A	N/A
VANADIUM	N/A	390	1100

- LEGEND**
- P — PROPERTY LINE
 - - - FENCE
 - X — EDGE OF CONCRETE
 - W — EXISTING SHEET PILE
 - C — CURB
 - G — EXISTING BUILDING
 - W — GAS UTILITY LINE
 - EUG — WATER UTILITY LINE
 - SS — UNDERGROUND ELECTRIC UTILITY LINE
 - COM — SEWER UTILITY LINE
 - 8" — 96" STEEL COMBINED SEWER (APPROXIMATE)
 - S — COMBINED SEWER MANHOLE
 - CATCH BASIN INLET
 - FIRE HYDRANT
 - WATER VALVE
 - PRE-EXCAVATION GROUND SURFACE ELEVATION CONTOURS 1' INTERVAL 5' INDEX LIMIT OF EXCAVATION
 - POST-EXCAVATION ELEVATION CONTOURS 1' INTERVAL 5' INDEX
 - STONE
 - RESTRICTED-USE AREA (REFER TO FIGURE 5-1A)
 - SITE BOUNDARY

- ABBREVIATIONS:**
- CCPW — CHROMATE CHEMICAL PRODUCTION WASTE
 - ft — FEET
 - mg/kg — MILLIGRAMS PER KILOGRAM
 - N/A — NOT APPLICABLE
 - NAVD88 — NORTH AMERICAN VERTICAL DATUM OF 1988
 - NJDEP — NEW JERSEY DEPARTMENT OF ENVIRONMENTAL PROTECTION
 - NRDCSRS — NJDEP NON-RESIDENTIAL DIRECT CONTACT SOIL REMEDIATION STANDARD
 - RDCSRS — NJDEP RESIDENTIAL DIRECT CONTACT SOIL REMEDIATION STANDARD - GARFIELD AVENUE GROUP (ALTERNATIVE REMEDIATION STANDARD APPROVED BY THE NJDEP ON DECEMBER 28, 2016)
 - SRS — SOIL REMEDIATION STANDARD
 - U.S. — UNITED STATES

- GENERAL NOTES:**
- G1. THE CCPW METALS DATA ASSOCIATED WITH THE SAMPLE LOCATIONS SHOWN ON THIS FIGURE ARE PROVIDED IN TABLE 5-2.
 - G2. "DEPTH" REFERS TO THE DIFFERENCE BETWEEN THE SAMPLE ELEVATION AND THE PRE-REMEDIATION SURFACE ELEVATION FOR SAMPLES COLLECTED FROM THE EXCAVATION PIT BOTTOM, OR THE SAMPLE DEPTH FROM THE SURFACE AT THE SAMPLE LOCATION WHEN THE SAMPLE WAS COLLECTED VIA BORING OR TEST PIT.
 - G3. ELEVATION VERTICAL DATUM IS NAVD88, IN U.S. SURVEY FT.
 - G4. RESULTS ARE REPORTED IN MG/KG.
 - G5. THIS FIGURE PRESENTS DATA FOR LOCATIONS WITHIN THE SITE BOUNDARY THAT HAVE SAMPLES REMAINING IN PLACE OR THAT HAVE REMOVED SAMPLES THAT SERVE AS CONFIRMATION SAMPLES. SELECT OFF-SITE LOCATIONS ARE PRESENTED IN THIS FIGURE TO DOCUMENT COMPLIANCE WITH THE REMEDIATION OBJECTIVES OR TO DOCUMENT DELINEATION. SPECIFIC NOTES ON TABLE 5-2 INCLUDE DISCUSSION OF THESE SITUATIONS, IF NECESSARY.
 - G6. "STATION" REFERS TO A SAMPLE'S LOCATION ALONG THE EXCAVATION'S CENTERLINE, WHICH RUNS THE LENGTH OF CARTERET AVENUE STARTING FROM THE WESTERNMOST EDGE OF CARTERET AVENUE.

- SPECIFIC NOTES:**
- S1. PRE-CONSTRUCTION TOPOGRAPHIC CONTOURS, PROPERTY LINES, BUILDING EXTENTS, AND SITE FEATURES ARE SOURCED FROM SURVEYS CONDUCTED BETWEEN NOVEMBER 2006 AND JULY 2014 BY BORBAS SURVEYING AND MAPPING, LLC.
 - S2. UNDERGROUND UTILITIES SHOWN ARE BASED ON THE CATCH BASIN-RECEPTOR EVALUATION SURVEY, PPG SITE 114, THE CITY OF JERSEY CITY, HUDSON COUNTY, NEW JERSEY, CONDUCTED BY BORBAS SURVEYING AND MAPPING, LLC, DATED APRIL 15, 2011, AND ON PLANS PROVIDED BY THE CITY OF JERSEY CITY.
 - S3. POST-EXCAVATION ELEVATION SURVEY POINTS WERE SOURCED FROM "AS-BUILT" EXCAVATION SURVEY, CARTERET AVE SITE EXCAVATION, CITY OF JERSEY CITY, HUDSON COUNTY, N.J., CONDUCTED BY BORBAS SURVEYING AND MAPPING, LLC, DATED JANUARY 27, 2021.
 - S4. SAMPLE LOCATIONS ARE ADJACENT TO EACH OTHER AT STATION 3+08, OFFSET 18L; STATION 3+87, OFFSET 30L; STATION 3+95, OFFSET 20R; STATION 4+15, OFFSET 18L; AND STATION 4+28, OFFSET 16L. THEREFORE, THE SAMPLE LOCATION SYMBOLS OVERLAP ON THE FIGURE.



**PPG
GARFIELD AVENUE GROUP SITES
JERSEY CITY, NEW JERSEY**

**SAMPLE MAP FOR CCPW METALS
COMPARED TO SOIL REMEDIATION STANDARDS**

DATE: 02/22/2021 | DRWN: JJA

FIGURE 5-2A

Fig. C: (Borbas) (AECOM) Director/PPG - 03/19/2020 SHEET(S) (Borbas) (Carteret) (Figures 5-1, 5-2, & 5-3) 2021-02-22 Carteret PPG Figures.dwg Layout: 5-2.1 (Borbas) (AECOM) Rev: 5