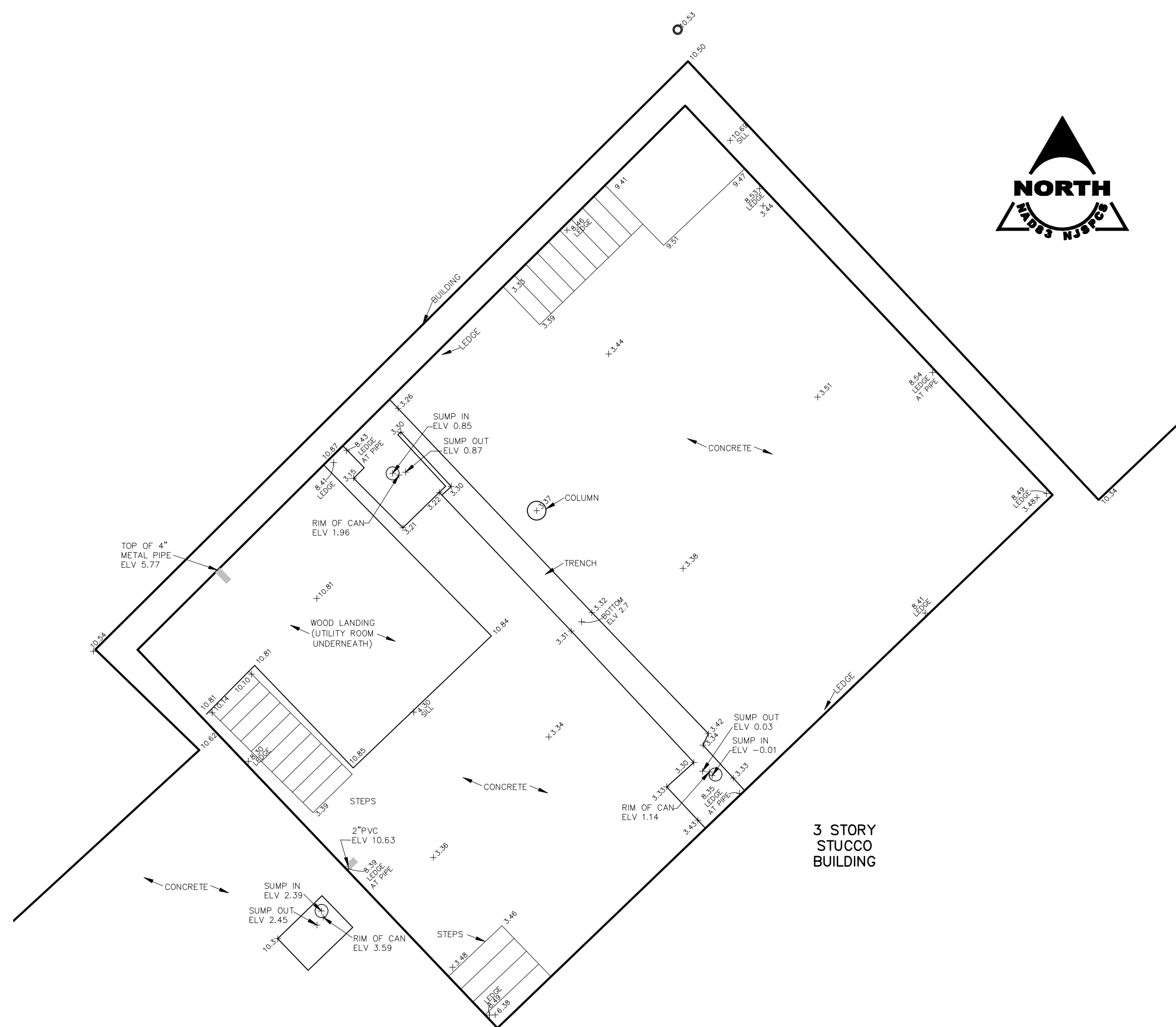
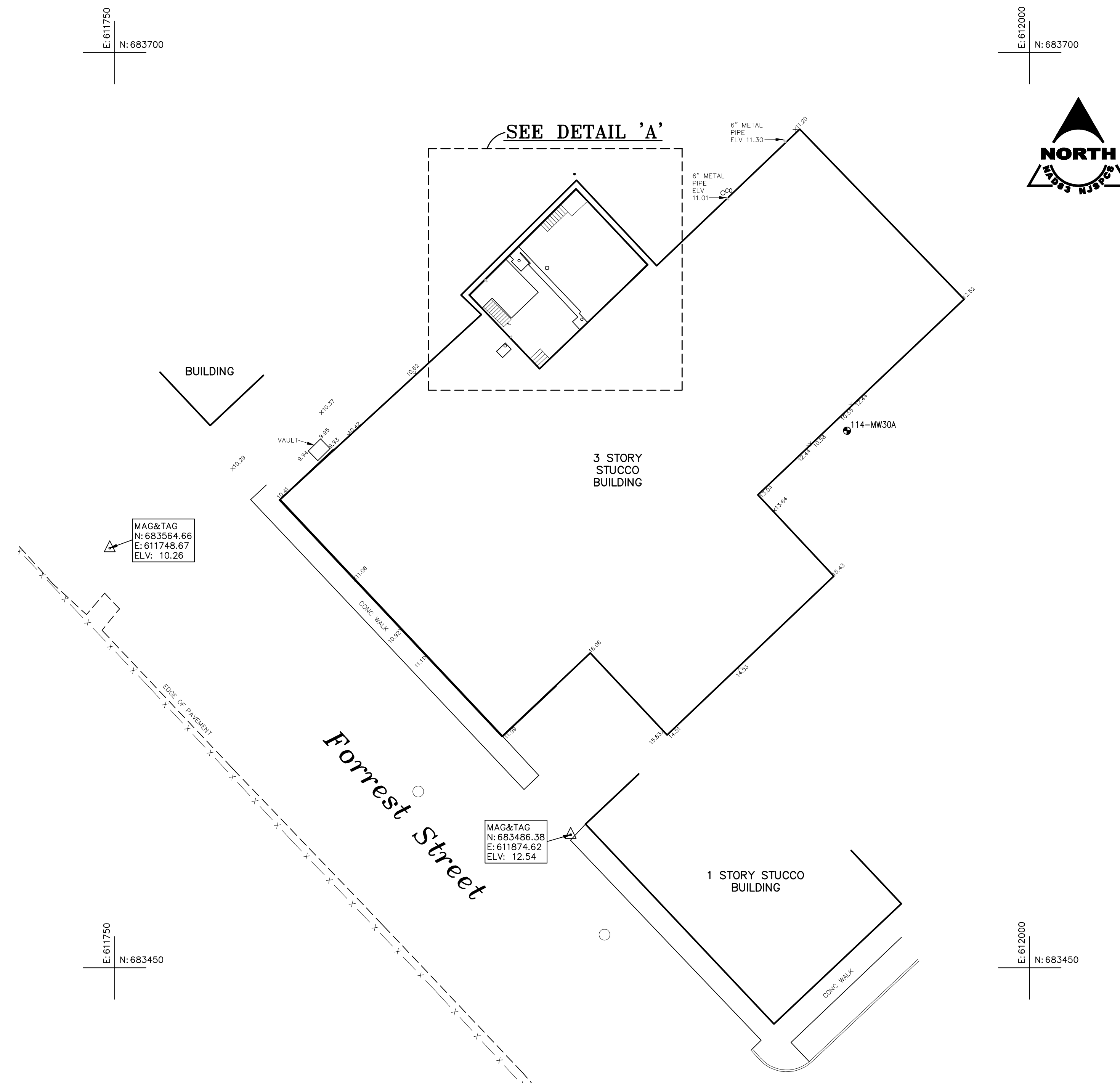


Appendix H

90 Forrest Street Boiler Room Basement: Survey



DETAIL 'A'
 SCALE: 1"=5'



SCALE: 1"=20'

- NOTES:**
1. THE HORIZONTAL DATUM IS THE NEW JERSEY STATE PLANE COORDINATE SYSTEM NAD83 DETERMINED BY DIFFERENTIAL GPS ON MARCH 27, 2012 USING THE NGS CORS SYSTEM. REFERENCE STATIONS: NJ2, NJNT, NYBP, NYBR AND NYVH.
 2. THE VERTICAL DATUM IS THE NORTH AMERICAN VERTICAL DATUM OF 1988 (NAVD88) GEIOD9 VERIFIED BY DIFFERENTIAL GPS OBSERVATIONS FROM THE NGS CORS NETWORK ON MAY 10, 2012. BENCHMARK REFERENCE STATIONS: NJ2, NJNT, NYBP, NYBR AND NYVH. ONSITE CONTROL POINT USED: BSM-1 BASE, SPIKE AND TAG, N:683022.76, E:611160.40, ELEV: 12.20
 3. ALL COORDINATES AND ELEVATIONS SHOWN HEREON ARE IN U.S. SURVEY FEET.
 4. THE UTILITIES SHOWN HAVE BEEN LOCATED FROM EVIDENCE OBSERVED ON THE SURFACE ONLY. THE SURVEYOR MAKES NO GUARANTEES THAT THE UTILITIES SHOWN COMPRISE ALL SUCH UTILITIES IN THE AREA, EITHER IN-SERVICE OR ABANDONED. THE SURVEYOR FURTHER DOES NOT WARRANT THAT THE UNDERGROUND UTILITIES SHOWN ARE IN THE EXACT LOCATION INDICATED. THE SURVEYOR HAS NOT PHYSICALLY LOCATED THE UNDERGROUND UTILITIES.

- REFERENCES:**
1. "FORREST STREET AREA PROPOSED HYDROGEOLOGICAL INVESTIGATION, PPG GARFIELD AVENUE GROUP OF SITES, JERSEY CITY, HUDSON COUNTY, NEW JERSEY", PREPARED BY AECOM, DATED MAY 23, 2012.
 2. "FORREST STREET BASEMENT SUMPS, JOB # 60154801.6001", PREPARED BY AECOM, DATED 5/31/2012.

**BASEMENT SURVEY
 86-90 FORREST STREET
 THE CITY OF JERSEY CITY
 HUDSON COUNTY, NEW JERSEY**

BORBAS SURVEYING & MAPPING, LLC
 402 MAIN STREET, BOONTON, NEW JERSEY 07005
 Phone (973) 316-8743 Fax (973) 402-6627 www.borbas.com
 NJ CERTIFICATE OF AUTHORIZATION NO. 240A28056200
 Environmental Site Mapping • Hazardous Materials and Waste Surveys
 Aerial Control and GPS Surveys • Topographic and Existing Condition Surveys
 Remote Sensing and GIS • Hydrographic/Bathymetric Surveys • ALTA/ACSM Certified Surveys
 Transportation and Right of Way Surveys • Deformation and Structure Monitoring Surveys

J. PETER BORBAS
 NJ PROFESSIONAL LAND SURVEYOR 246S03165300 PROFESSIONAL PLANNER 3884

Date: DECEMBER 21, 2012

SCALE: AS SHOWN	
SHEET NO.: 1 OF 1	
FIELD BOOK: 2012-4/113	
JOB NO.: 051201	
PROJECT NAME: 051201_2012_CTRL & REM	
DRAWING NO.: 051201_2012-12-21_BASEMENTS	
ADDITIONS AND UPDATES	

P:\12012012\12012012\12012012\12012012_2012_Conc and Remediating\051201_2012-12-21_BaseMENTS.dwg, 12/21/2012 2:48:11 PM