

**LEGEND**

- PROPERTY LINE
- CONCEPTUAL POST-EXCAVATION AREA BOUNDARIES
- ELEVATION CONTOUR (1-FOOT INTERVAL IN FT NAVD88)
- PRE-REMEDIATION SURFACE ELEVATION CONTOUR (1-FOOT INTERVAL IN FT NAVD88)
- SHEET PILE (AS OF MARCH 2019)
- CONCRETE WALL
- DOOR
- RAILROAD
- BUILDING FOOTPRINT
- CURRENT-USE REMEDIATION AREA BOUNDARIES
- LOCATION WHERE CCPW WAS VISUALLY OBSERVED
- COPR SEAM OBSERVED DURING EXCAVATION; REMOVED DURING RESTORATION

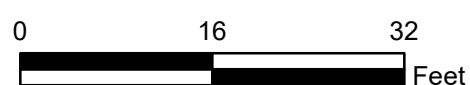
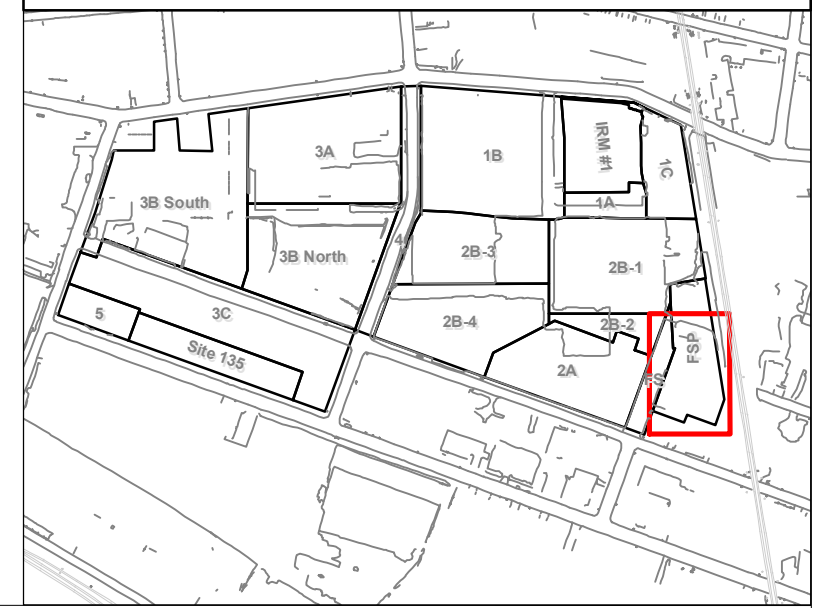
**ABBREVIATIONS:**

- bgs – below ground surface
- CCPW – Chromate Chemical Production Waste
- COPR – Chromite Ore Processing Residue
- ft – feet
- NAVD88 – North American Vertical Datum of 1988

**GENERAL NOTES:**

- G1. Source of block/lot information is Jersey City Parcel Data from New Jersey Geographic Information Network (NJGIN), last updated 10/6/2015 (available at: <http://data.jerseycitynj.gov/dataset/jersey-city-parcel-polygon>).
- G2. Property lines and pre-construction topographical contours are sourced from the "Boundary and Topographic Survey, PPG Industries Site 114, Lots 11, 12, 14 and 15, Block 21501, City of Jersey City, Hudson County, New Jersey" prepared by Borbas Surveying and Mapping, LLC, dated January 8, 2019.
- G3. Conceptual post-excitation elevation contours were generated using professional judgement based on post-excitation survey points and knowledge of excavation practices utilized during the remedial excavation (i.e., excavation conducted on a 30-foot by 30-foot basis). Post excavation survey points were sourced from the "Post Excavation Elevation Plan for ENACT, LLC; PPG Site 133 & 135 Skyways," prepared by Maser Consulting P.A., dated June 30, 2017.
- G4. See Table 2-2 Specific Notes for explanations of how remaining CCPW presented here is being addressed.

**MAP LOCATION**



PPG  
FORREST CURRENT-USE REMEDIATION AREAS  
GARFIELD AVENUE GROUP  
JERSEY CITY, NEW JERSEY

**REMEDIAL ACTION WORKPLAN  
LOCATIONS OF VISUALLY OBSERVED CCPW IN SOIL**

Date: 3/11/2019

Drawn by: ALC

FIGURE 4-1