

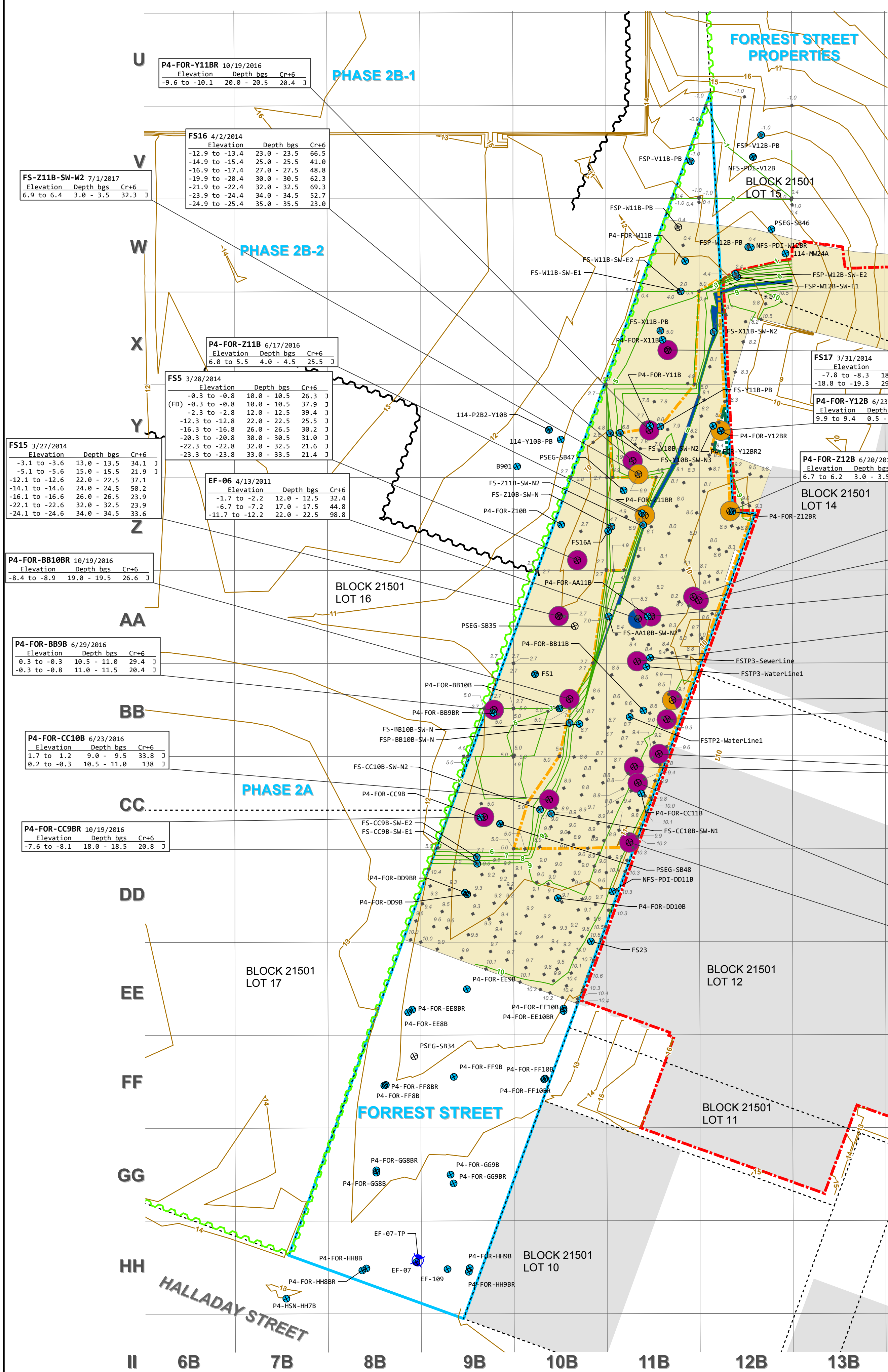
**LEGEND**

- ⊗ SAMPLING LOCATION (REMAINING SAMPLES)
- ⊙ SAMPLING LOCATION (REMOVED Cr<sup>+6</sup> CONFIRMATION SAMPLES)
- REMAINING SAMPLES NOT ANALYZED FOR Cr<sup>+6</sup>
- RESULT IS LESS THAN THE MOST STRINGENT STANDARD
- RESULTS EXCEED THE MOST STRINGENT STANDARD, BUT ARE IN COMPLIANCE WITH THE CHROMIUM POLICY PER THE METHOD TO DETERMINE COMPLIANCE AND/OR THE FORREST TEE SUBMITTAL
- RESULTS EXCEED THE MOST STRINGENT STANDARD, BUT ARE BEING ADDRESSED VIA ENGINEERING CONTROLS AND INSTITUTIONAL CONTROLS
- OBSERVED CCPW REMAINING IN PLACE, BUT IS BEING ADDRESSED VIA ENGINEERING CONTROLS AND INSTITUTIONAL CONTROLS
- ⊕ TEST PIT LOCATION
- ◆ -3.8 POST-EXCAVATION ELEVATION SURVEY POINT REPRESENTING AS-BUILT TERMINAL EXCAVATION ELEVATION (FT NAVD88)
- ~ IN PLACE SHEET PILE (AS OF FEBRUARY 2019)
- ~ REMOVED SHEET PILE
- ~ PRE-REMEDIATION ELEVATION CONTOUR (1-FOOT INTERVAL IN FT NAVD88)
- ~ CONCEPTUAL POST-EXCAVATION ELEVATION CONTOUR (1-FOOT INTERVAL IN FT NAVD88)
- PROPERTY LINE
- ▭ SITE BOUNDARY
- ▭ FORREST STREET UTILITY OFFSET BEING ADDRESSED VIA ENGINEERING CONTROLS (HOPE LINER) AND INSTITUTIONAL CONTROLS (NOTICE IN LIEU OF DEED NOTICE)
- ▭ SOUTHERN PORTION OF 100 FORREST STREET LOADING DOCK DRIVEWAY BEING ADDRESSED VIA ENGINEERING CONTROLS (EXISTING ASPHALT AND CONCRETE CAP) AND INSTITUTIONAL CONTROLS (NOTICE IN LIEU OF DEED NOTICE)
- ▭ FORREST STREET PROPERTIES TO BE ADDRESSED VIA ENGINEERING CONTROLS AND INSTITUTIONAL CONTROLS TO BE DISCUSSED IN A SEPARATE SUBMITTAL
- ▭ APPROXIMATE LOCATION OF COPR SEAM OBSERVED DURING REMEDIAL EXCAVATION; REMOVED DURING RESTORATION
- ▭ HDPE LINER EXTENT
- ▭ GRID LAYOUT
- ▭ BUILDING

Soil Cleanup Criterion (mg/kg)	
Analyte	CrSCC
CHROMIUM (HEXAVALENT)	20

Sample ID	Elevation	Depth bgs	Cr+6
P4-FOR-A112BR 10/20/2016	-2.3 to -2.8	12.0 - 12.5	22.3 J
P4-FOR-A112BR 10/20/2016	-4.3 to -4.8	14.0 - 14.5	30.0 J
P4-FOR-A112BR 10/20/2016	2.0 to 1.5	8.0 - 8.5	54.1
P4-FOR-A112BR 10/20/2016	0.0 to -0.5	10.0 - 10.5	55.9
P4-FOR-A112BR 10/20/2016	-2.0 to -2.5	12.0 - 12.5	21.9
P4-FOR-A112BR 10/20/2016	-10.0 to -10.5	20.0 - 20.5	25.0
P4-FOR-A112BR 10/20/2016	-12.0 to -12.5	22.0 - 22.5	24.6
P4-FOR-A112BR 10/20/2016	-14.0 to -14.5	24.0 - 24.5	23.4
P4-FOR-A112BR 10/20/2016	-16.0 to -16.5	26.0 - 26.5	37.2
P4-FOR-A112BR 10/20/2016	-18.0 to -18.5	28.0 - 28.5	84.2

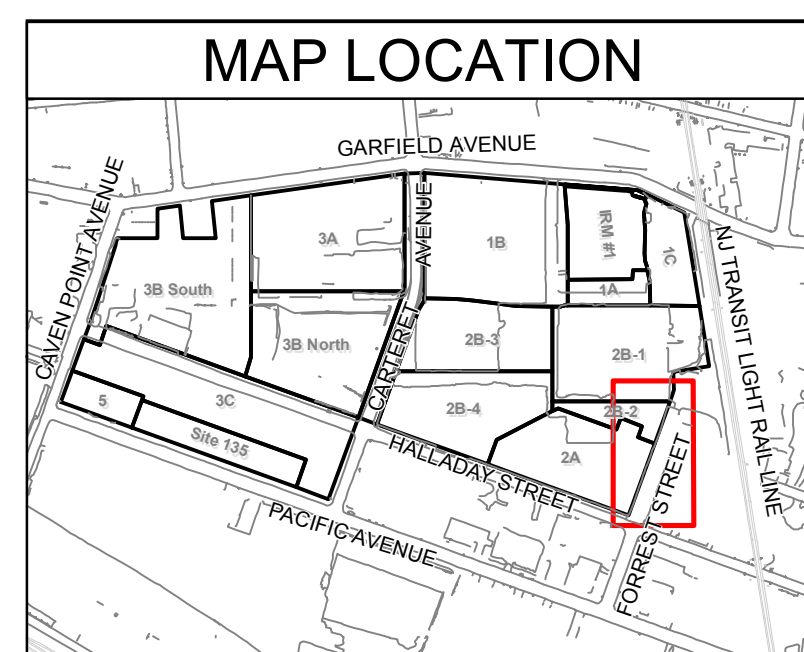


**ABBREVIATIONS:**  
 bgs - below ground surface  
 CCPW - Chromate Chemical Production Waste  
 Chromium Policy - Memorandum from NJDEP Commissioner Lisa P. Jackson to Irene Kropp, Subject: Chromium Remediation (Chromium Policy), dated February 8, 2007.  
 COPR - Chromite Ore Processing Residue  
 Cr<sup>+6</sup> - hexavalent chromium  
 CrSCC - Chromium Soil Cleanup Criteria  
 FD - field duplicate sample  
 Forrest TEE Submittal - March 2017 Forrest Street and Forrest Street Properties - Proposed Terminal Excavation Elevations Submittal (Revision 1) (AECOM), as accepted by NJDEP on May 25, 2017.  
 ft - feet  
 HDPE - high-density polyethylene  
 Method to Determine Compliance - Letter from Mr. Thomas Cozzi to W. Michael McCabe, Subject: Re: Updated Method to Determine Compliance with the Department's Chromium Policy, Garfield Avenue - Sites 114, 132, 133, 135, 137, and 143, Jersey City, NJ, August 13, 2013.  
 mg/kg - milligrams per kilogram  
 NAVD88 - North American Vertical Datum of 1988  
 NJDEP - New Jersey Department of Environmental Protection  
 U.S. - United States

**QUALIFIERS:**  
 J - The result was an estimated value; the associated numerical value was an approximate concentration of the analyte in the sample.

**GENERAL NOTES:**  
 G1. The hexavalent chromium data associated with the sample locations shown on this figure are provided in Table 5-1. Data presented in call out boxes on this figure are outliers (i.e., data points that require further explanation). When a single location is represented with both an orange and purple symbol (i.e., FS4), the orange indicates "results exceed the most stringent standard, but are being addressed via engineering controls and institutional controls," which applies to the shallower samples at that location (above the horizontal dashed line in the call out box). The purple indicates "results exceed the most stringent standard, but are in compliance with the Chromium Policy per the Method to Determine Compliance and/or the Forrest TEE Submittal," which applies to deeper samples at that location (below the horizontal dashed line in the call out box). Specific notes on how the NJDEP's remedial standards are being met and/or how remedial completion is being achieved/completed for each outlier sample are provided in the Specific Notes in Table 5-1.  
 G2. "Elevation" refers to the sample elevation based on the pre-remediation surface elevation for samples collected from the pit bottom, and the surface elevation of the sample location when the sample was collected via boring or test pit.  
 G3. Elevation vertical datum is NAVD88, in U.S. survey ft.  
 G4. Results are reported in mg/kg.  
 G5. Source of block/lot information is Jersey City Parcel Data from New Jersey Geographic Information Network (NJGIN), last updated 10/6/2015 (available at: <http://data.jerseycitynj.gov/dataset/jersey-city-parcel-polygon>).  
 G6. This figure presents data for locations within the Site boundary that have samples remaining in place. In addition, locations from outside the Site boundary and/or removed samples may be shown to demonstrate compliance with the remediation objectives. The Specific Notes on Table 5-1 include discussion of these situations, if necessary.

**SPECIFIC NOTES:**  
 S1. Property lines and pre-construction topographical contours are sourced from the "Boundary and Topographic Survey, PPG Industries Site 114, Lots 11, 12, 14 and 15, Block 21501, City of Jersey City, Hudson County, New Jersey" prepared by Borbas Surveying and Mapping, LLC, dated January 8, 2019.  
 S2. Post-excavation elevation survey points were sourced from the "Post Excavation Elevations Plan for ENACTA, LLC; PPG Site 133 & 135 Skyways," prepared by Maser Consulting P.A., dated June 30, 2017.  
 S3. Conceptual post-excavation elevation contours were generated using professional judgment based on post-excavation elevation survey points and knowledge of excavation practices utilized during remedial excavation (i.e., excavation conducted on a 30 ft by 30 ft basis).  
 S4. In Grids FF8B, FF10B, W11B, and Y12B, two sample locations are located adjacent, therefore, the sampling location symbols overlap on the figure.  
 S5. Remediation was not required in the portions of Grids DD8B, DD9B, DD10B, DD11B, EE8B, EE9B, EE10B, FF8B, FF9B, FF10B, GG7B, GG8B, GG9B, GG10B, HH7B, HH8B, and HH9B in Forrest Street as per the Forrest TEE Submittal. Sub-grade excavation was conducted in Grids DD8B, DD9B, DD10, DD11B, EE8B, and EE10B for restoration only.



**PPG  
 FORREST STREET  
 GARFIELD AVENUE GROUP  
 JERSEY CITY, NEW JERSEY**

Date: 2/13/2019

**SAMPLE MAP FOR Cr<sup>+6</sup> COMPARED  
 TO CHROMIUM SOIL CLEANUP CRITERION**

FIGURE 5-1