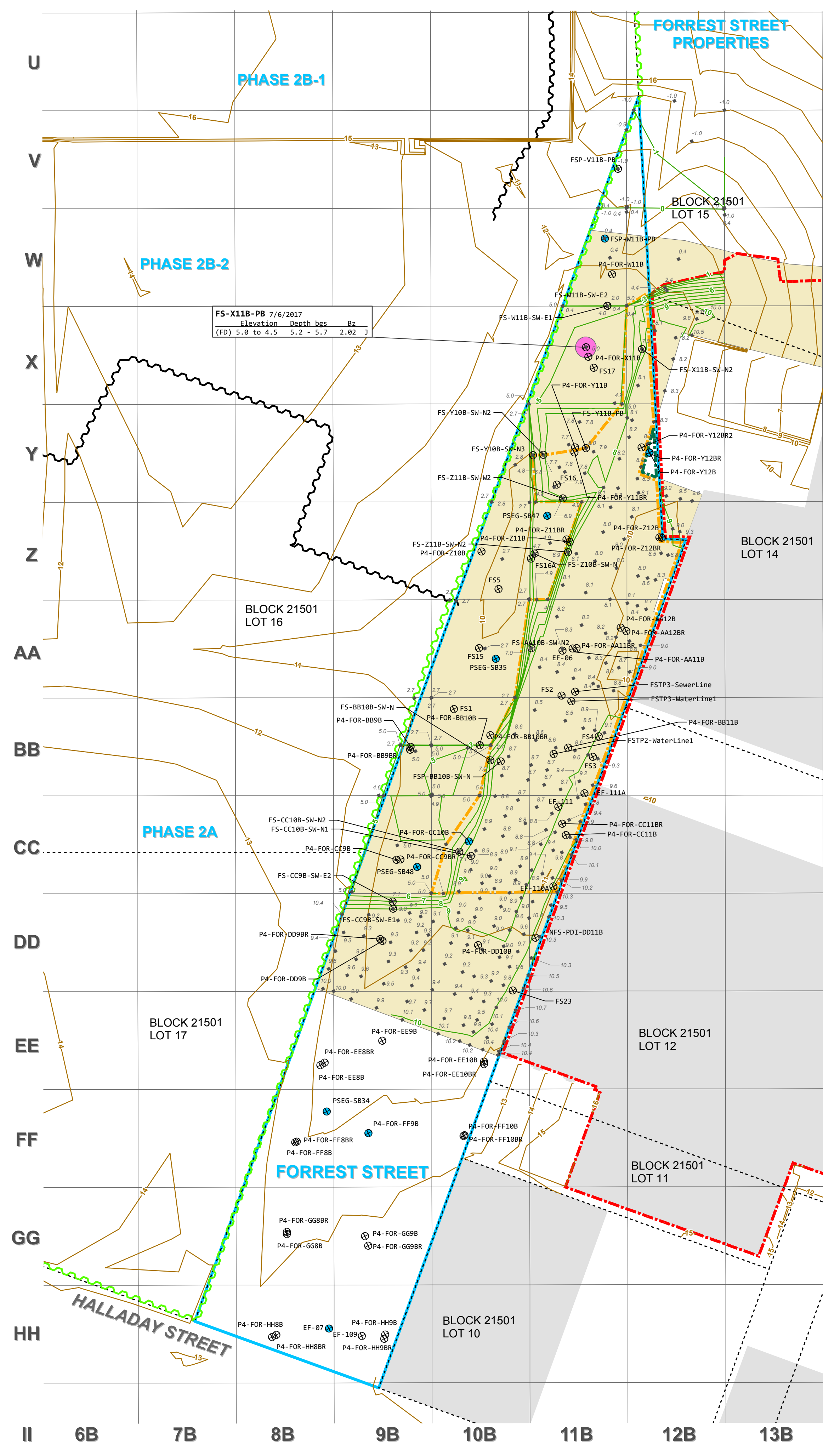


LEGEND

- ⊗ SAMPLING LOCATION (REMAINING SAMPLES)
- REMAINING SAMPLES NOT ANALYZED FOR BENZENE
- RESULT IS LESS THAN THE MOST STRINGENT STANDARD
- RESULT EXCEEDS THE MOST STRINGENT STANDARD, BUT IS BEING ADDRESSED VIA ENGINEERING CONTROLS AND INSTITUTIONAL CONTROLS
- BENZENE (Bz)
- POST-EXCAVATION ELEVATION SURVEY POINT REPRESENTING AS-BUILT TERMINAL EXCAVATION ELEVATION (FT NAVD88)
- IN PLACE SHEET PILE (AS OF FEBRUARY 2019)
- REMOVED SHEET PILE
- PRE-REMEDIATION ELEVATION CONTOUR (1-FOOT INTERVAL IN FT NAVD88)
- CONCEPTUAL POST-EXCAVATION ELEVATION CONTOUR (1-FOOT INTERVAL IN FT NAVD88)
- PROPERTY LINE
- SITE BOUNDARY
- FORREST STREET UTILITY OFFSET BEING ADDRESSED VIA ENGINEERING CONTROLS (HOPE LINER) AND INSTITUTIONAL CONTROLS (NOTICE IN LIEU OF DEED NOTICE)
- SOUTHERN PORTION OF 100 FORREST STREET LOADING DOCK DRIVEWAY BEING ADDRESSED VIA ENGINEERING CONTROLS (EXISTING ASPHALT AND CONCRETE CAP) AND INSTITUTIONAL CONTROLS (NOTICE IN LIEU OF DEED NOTICE)
- FORREST STREET PROPERTIES TO BE ADDRESSED VIA ENGINEERING CONTROLS AND INSTITUTIONAL CONTROLS TO BE DISCUSSED IN A SEPARATE SUBMITTAL
- HDPE LINER EXTENT
- GRID LAYOUT
- BUILDING

Soil Remediation Standards (mg/kg)		
Analyte	RDCSRS	NRDCSRS
BENZENE	2	5

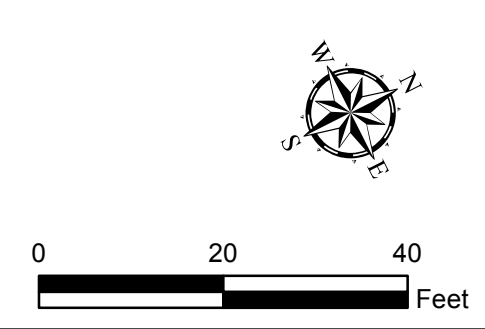
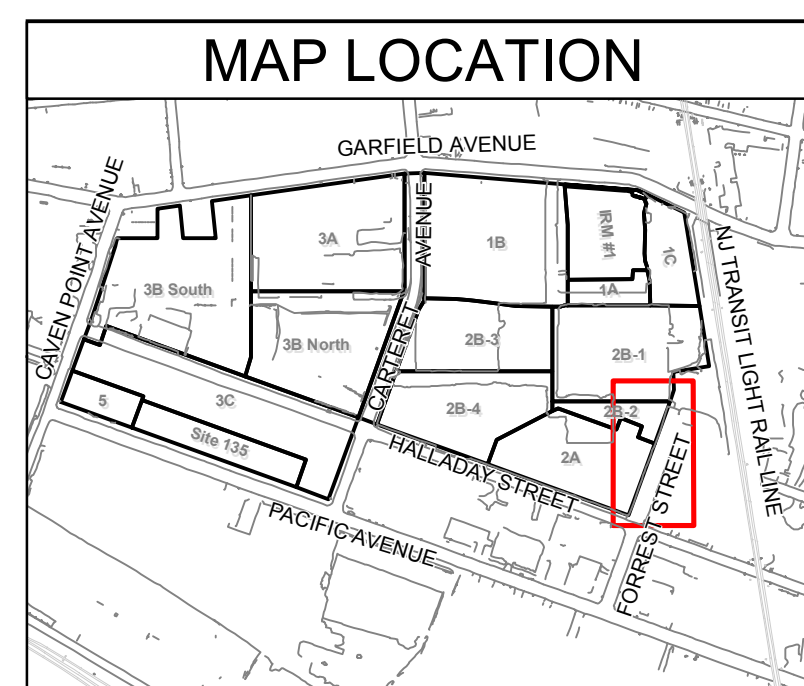


FS-X11B-PB 7/6/2017			
Elevation	Depth bgs	Bz	
(FD) 5.0 to 4.5	5.2 - 5.7	2.02	3

ABBREVIATIONS:
 bgs - below ground surface
 Bz - benzene
 FD - field duplicate sample
 Forrest TEE Submittal - March 2017 *Forrest Street and Forrest Street Properties*
 Proposed Terminal Excavation Elevations Submittal (Revision 1)
 (AECOM), as accepted by NJDEP on May 25, 2017.
 ft - feet
 HDPE - high-density polyethylene
 mg/kg - milligrams per kilogram
 NAVD88 - North American Vertical Datum of 1988
 NJDEP - New Jersey Department of Environmental Protection
 NRDCSRS - New Jersey Department of Environmental Protection Non-Residential Direct Contact Soil Remediation Standard
 RDCSRS - New Jersey Department of Environmental Protection Residential Direct Contact Soil Remediation Standard
 U.S. - United States

GENERAL NOTES:
 G1. The benzene data associated with the sample locations shown on this figure are provided in Table 5-6. Data presented in call out boxes on this figure are outliers (i.e., data points that require further explanation). Specific notes on how the NJDEP's remedial standards are being met and/or how remedial completion is being achieved/completed for each outlier sample are provided in the Specific Notes in Table 5-6.
 G2. "Elevation" refers to the sample elevation based on the pre-remediation surface elevation for samples collected from the pit bottom, and the surface elevation of the sample location when the sample was collected via boring or test pit.
 G3. Elevation vertical datum is NAVD88, in U.S. survey ft.
 G4. Results are reported in mg/kg.
 G5. Source of block/lot information is Jersey City Parcel Data from New Jersey Geographic Information Network (NJGIN), last updated 10/6/2015 (available at: <http://data.jerseycitynj.gov/dataset/jersey-city-parcel-polygon>).
 G6. This figure presents data for locations within the Site boundary that have samples remaining in place.

SPECIFIC NOTES:
 S1. Property lines and pre-construction topographical contours are sourced from the "Boundary and Topographic Survey, PPG Industries Site 114, Lots 11, 12, 14 and 15, Block 21501, City of Jersey City, Hudson County, New Jersey" prepared by Borbas Surveying and Mapping, LLC, dated January 8, 2019.
 S2. Post-excavation elevation survey points were sourced from the "Post Excavation Elevations Plan for ENTACT, LLC; PPG Site 133 & 135 Skyways," prepared by Maser Consulting P.A., dated June 30, 2017.
 S3. Conceptual post-excavation elevation contours were generated using professional judgment based on post-excavation elevation survey points and knowledge of excavation practices utilized during remedial excavation (i.e., excavation conducted on a 30 ft by 30 ft basis).
 S4. In Grids FF8B, FF10B, W11B, and Y12B, two sample locations are located adjacent; therefore, the sampling location symbols overlap on the figure.
 S5. Remediation was not required in the portions of Grids DD8B, DD9B, DD10B, DD11B, EE8B, EE9B, EE10B, FF8B, FF9B, FF10B, GG7B, GG8B, GG9B, HH7B, HH8B, and HH9B in Forrest Street as per the Forrest TEE Submittal. Sub-grade excavation was conducted in Grids DD8B, DD9B, DD10, DD11B, EE9B, and EE10B for restoration only.



PPG
 FORREST STREET
 GARFIELD AVENUE GROUP
 JERSEY CITY, NEW JERSEY
 Date: 2/13/2019

SAMPLE MAP FOR BENZENE
 COMPARED TO SOIL REMEDIATION STANDARDS
 FIGURE 5-6