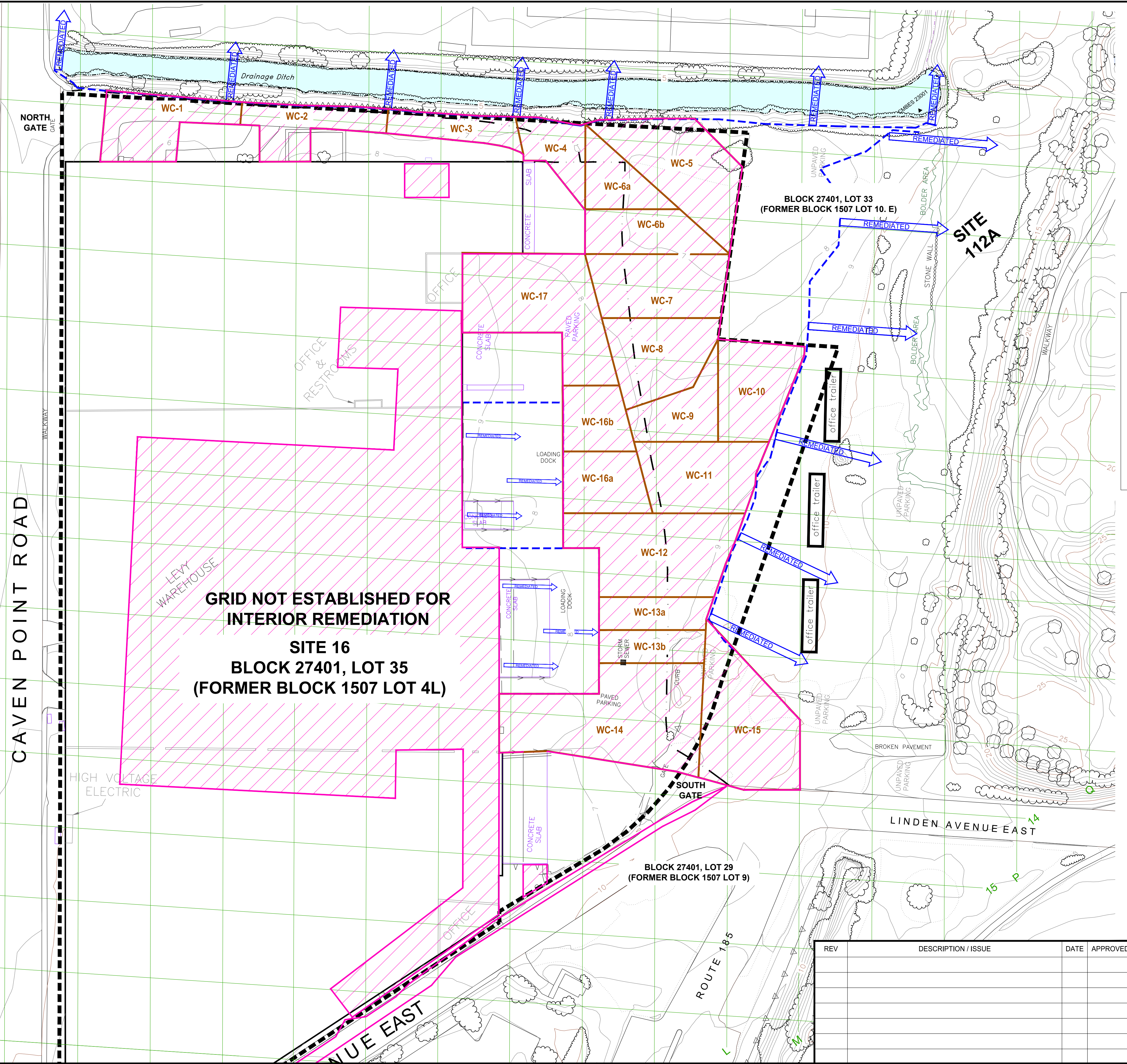


I-78 NEW JERSEY TURNPIKE EXTENSION

REF: Files: \\BACE-Files\BACE\Projects\146429-D1-3\146429-D1-3.dwg
 PLOT Date/Time: Feb 12, 2020 11:24:00
 Plotted By: Aracelis Tomasi

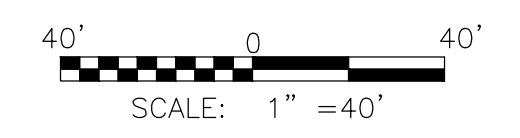


GRID NOT ESTABLISHED FOR INTERIOR REMEDIATION
SITE 16
BLOCK 27401, LOT 35
(FORMER BLOCK 1507 LOT 4L)

LEGEND:

- PROPERTY BOUNDARY
- - - EDGE OF PREVIOUSLY REMEDIATED AREAS
- ▨ PROPOSED REMEDIATION AREAS
- - - EDGE OF PAVED ASPHALT
- SURFACE CONTOUR LINE (MAJOR-10 FT INTERVAL)
- SURFACE CONTOUR LINE (MINOR-1FT INTERVAL)
- 60' GRID LINE
- WC-1 — WASTE CLASSIFICATION CELL BOUNDARY AND ID

- NOTES:**
- EACH WASTE CLASSIFICATION CELL IS CHARACTERIZED BY WASTE CLASSIFICATION SAMPLE COLLECTED DURING THE DESIGN BORINGS INVESTIGATION PHASE.
 - EXCAVATION ACTIVITIES WILL GENERALLY PROCEED CELL BY CELL IN ORDER UNLESS AN ALTERNATIVE PHASING PLAN IS PROPOSED BY CONTRACTOR AND ACCEPTED BY THE PROJECT MANAGER.



<p>Aptim Environmental & Infrastructure, Inc. 200 Horizon Center Trenton, New Jersey 08691</p>		DESIGNED BY: M. King	<p>PPG INDUSTRIES, INC. JERSEY CITY, NEW JERSEY</p> <p>FIGURE 4 WASTE CLASSIFICATION AREA GRID MAP SITE 016 45 LINDEN AVENUE EAST JERSEY CITY, NEW JERSEY</p>			
		DRAWN BY: A.Y.				
CHECKED BY: C. Leavy		APPROVED BY: C. Leavy	DATE: 2/13/18	SCALE: AS SHOWN	DRAWING NO. 146429-D1	FIGURE NO. 4

REV	DESCRIPTION / ISSUE	DATE	APPROVED