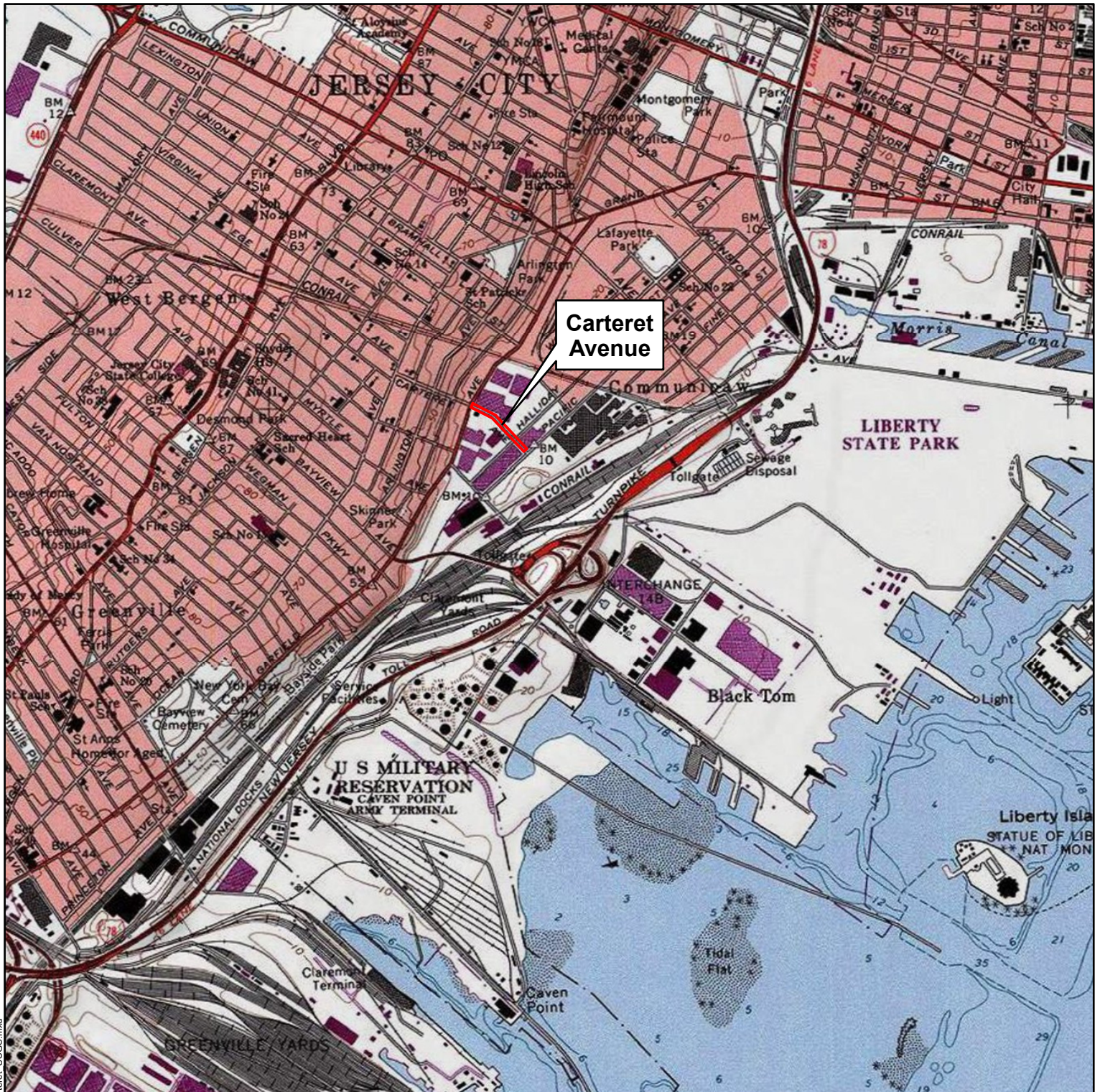


Figures



Legend

Site Boundary

Notes:

1. State Plane NAD83 Coordinates, U.S. Survey Feet
2. USGS 7.5' Topographic Quadrangle - Jersey City NJ-NY. Esri ArcGIS map service, <http://services.arcgisonline.com/ArcGIS/services>



0 1,000 2,000 Feet



AECOM

30 Knightsbridge Rd.
Suite 520
Piscataway, NJ 08854
Phone: 732-564-3600

USGS Site Location Map

Carteret Avenue
PPG
Jersey City, Hudson County, New Jersey

Project No.: 60580814

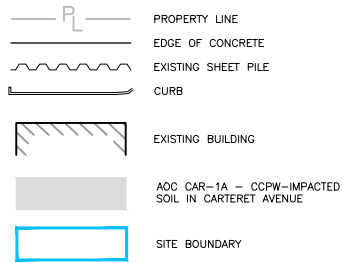
Scale: 1:24,000

Date: 12/7/2020

Sheet: 1 of 1

FIGURE 1-1

LEGEND



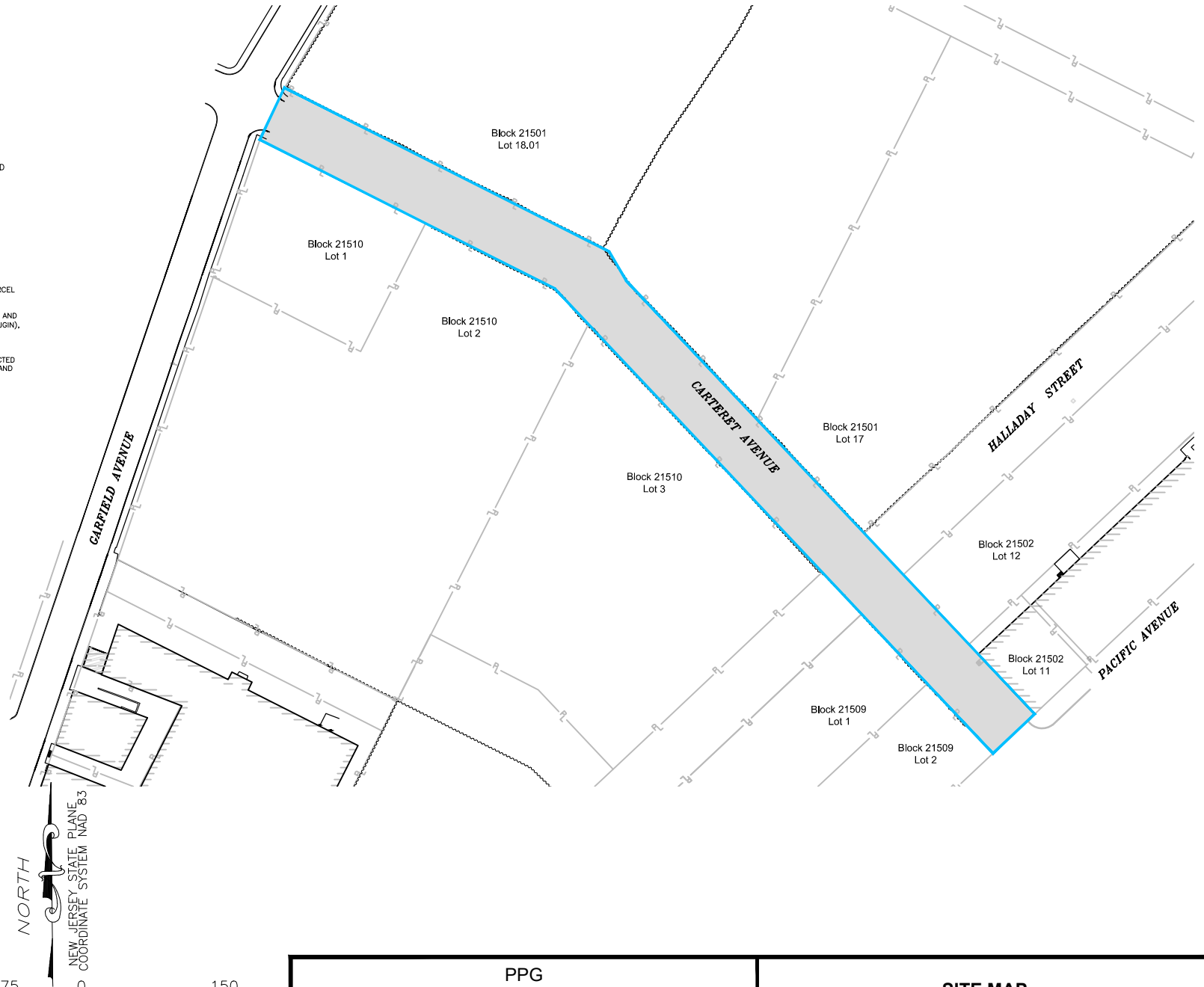
NOTES:

AOC - AREA OF CONCERN

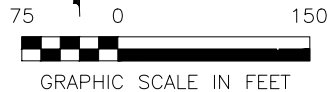
CCPW - CHROMATE CHEMICAL PRODUCTION WASTE

1. SOURCES OF BLOCK/LOT INFORMATION ARE JERSEY CITY PARCEL DATA FROM TAX MAP VIEWER LAST ACCESSED MARCH 2021 AVAILABLE AT:
<http://hostedfiles.civilsolutions.biz/jerseycity/taxmaps/index.htm> AND FROM THE NEW JERSEY GEOGRAPHIC INFORMATION NETWORK (NJGIN), LASTED ACCESSED MARCH 2021 AVAILABLE AT:
https://njgin.state.nj.us/GIS_JW

2. THE PROPERTY LINES ARE SOURCED FROM SURVEYS CONDUCTED FROM NOVEMBER 2006 TO JULY 2014 BY BORBAS SURVEYING AND MAPPING, LLC.



AECOM



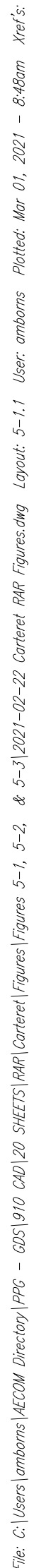
PPG
GARFIELD AVENUE GROUP
JERSEY CITY, NEW JERSEY

SITE MAP
CARTERET AVENUE

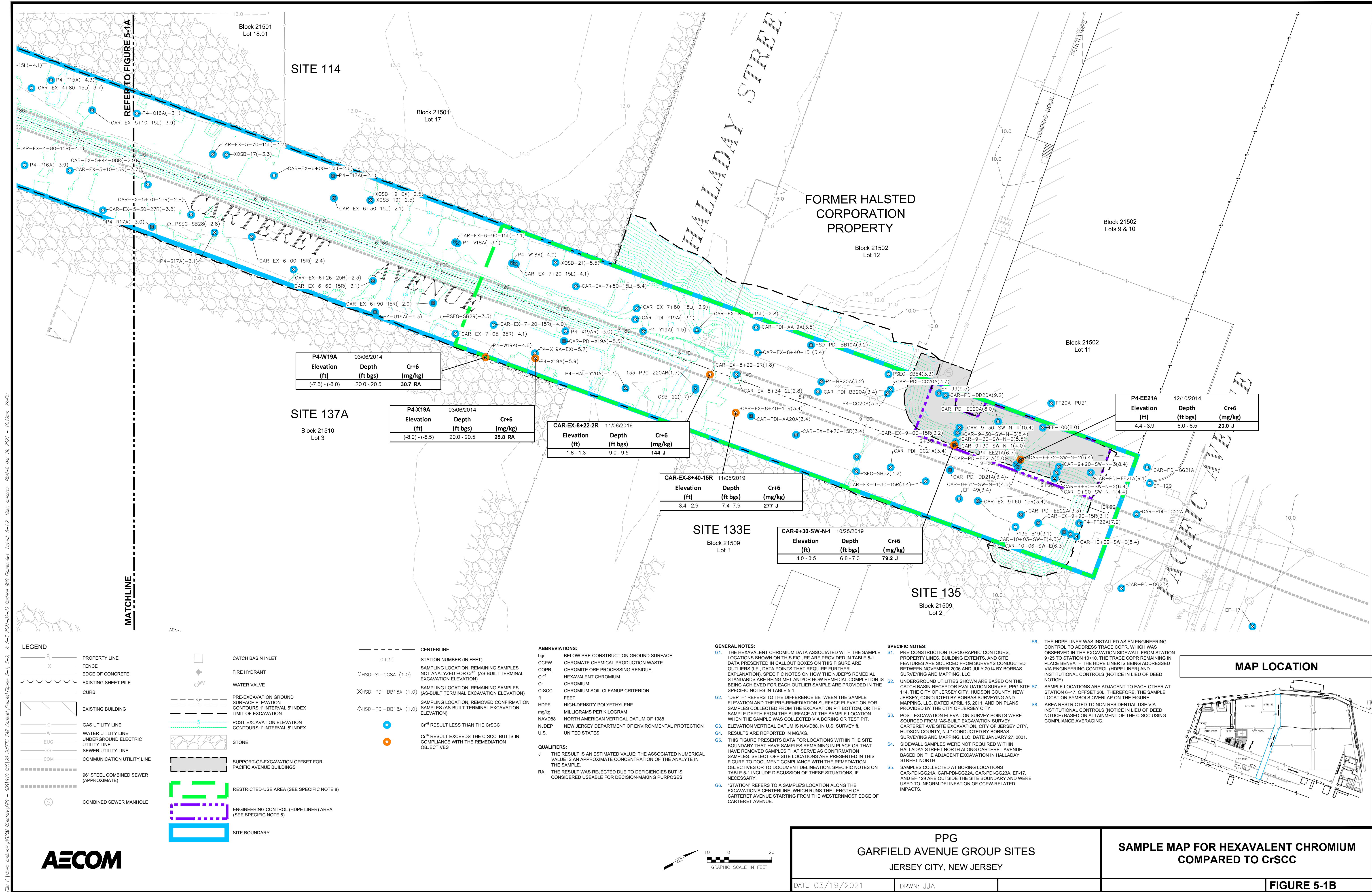
DATE: 07/07/2021

DRWN: SAP

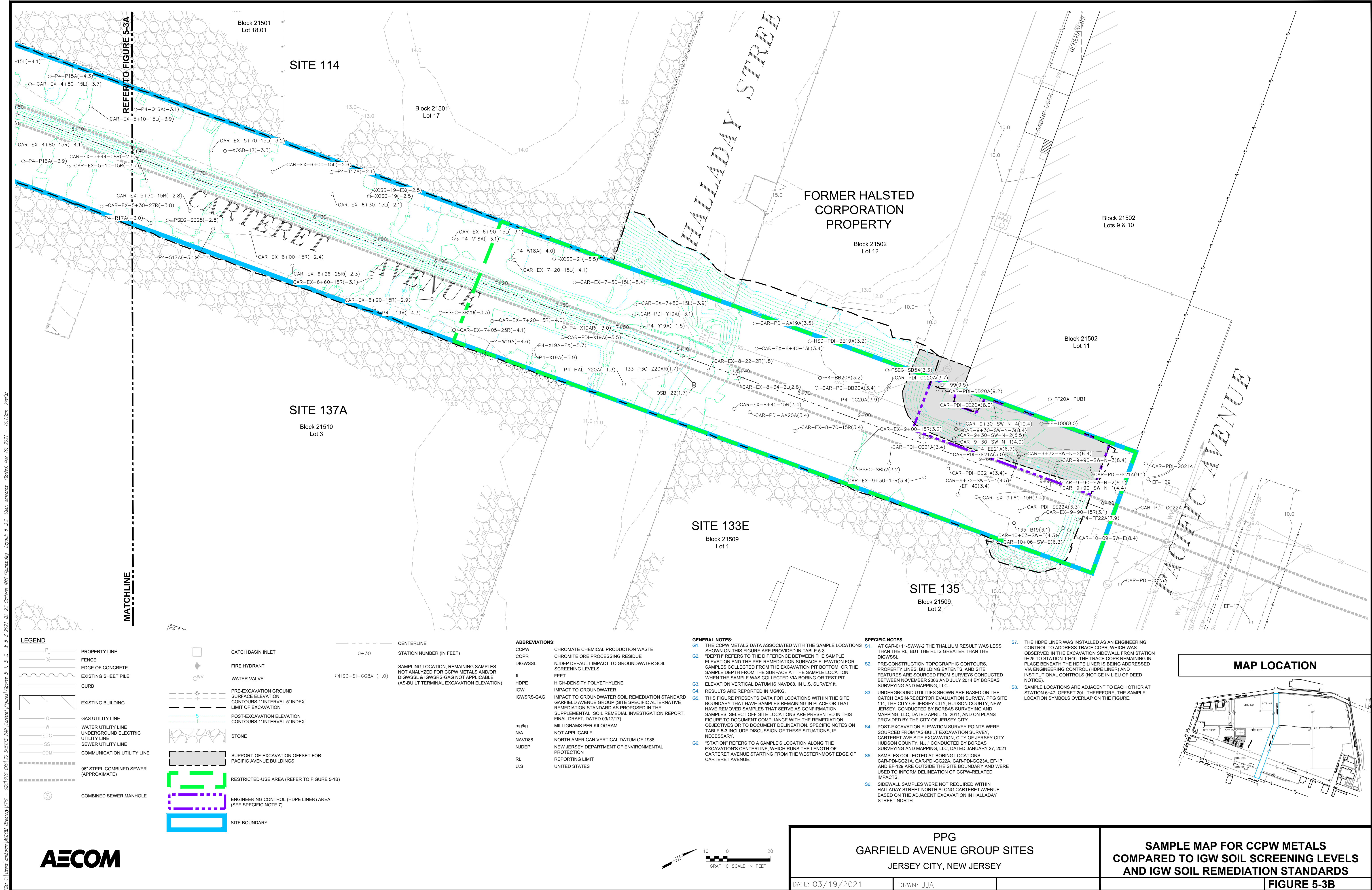
FIGURE 1-2



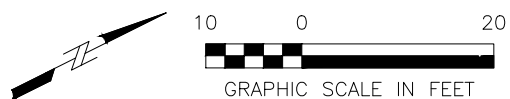
File: C:\Users\lamborn\AECOM\Director\PPG - 03/19/2021\02-22 Carteret PPG Figures.dwg Layout: 5-1, 5-2, & 5-3 2021-02-22 Carteret PPG Figures.dwg Layout: 5-1, 5-2, & 5-3 2021-02-22 User: lamborn Plotted: Mar 19, 2021 - 10:12am Xref's:



File: C:\Users\lombardi\AECOM\Director\PPG - 03/19/2021\02-22 Carteret PPG Figures.dwg Layout: 5-1, 5-2, & 5-3 2021-02-22 Carteret PPG Figures.dwg Layout: 5-1, 5-2, & 5-3 User: lombardi Plotted: Mar 19, 2021 - 10:17am xref's



AECOM



PPG
GARFIELD AVENUE GROUP SITES
JERSEY CITY, NEW JERSEY

DATE: 03/19/2021

DRWN: JJA

**SAMPLE MAP FOR CCPW METALS
COMPARED TO IGW SOIL SCREENING LEVELS
AND IGW SOIL REMEDIATION STANDARDS**

FIGURE 5-3B